

# 文 献 目 録

文献調査委員会

注：○掲載順序：雑誌名・巻号・発行年月・論文名・ページ数・著者  
○目録欄に登録の雑誌はすべて土木学会土木図書館備付図書である。

## 一 般

### Civil Engineering 44—2 74—2

- 1 Goals established for ASCE activities. (39-42)
- 2 After Agnew : what's happening in the profession. (43-47)
- 3 Computer drafting saves drawing time, cuts cost. (48-52) Nonnenman, W.K.
- 4 Seacoast dam separates salt water and fresh. (53-58) Ziogas, C.C.
- 5 Building foundations for soft clay, earthquake area-Mat foundation. (56-59) Roberts, J.E. et al.
- 6 Building foundation for soft clay, earthquake area-Pile foundation. (58-59) Margason, E., et al.
- 7 Engineers Notebook, Design of laterally unsupported beams. (60-61) Brandt, G.D.
- 8 Some time saving, cost cutting drafting methods. (65-67) Dallaire, G.
- 9 Polystyrene foam is competitive, lightweight fill. (68-69) Coleman, T.

### Civil Engineering 44—4 74—4

- 10 Oxygen activated sludge selected by Philadelphia. (42-45) Nelson, M.
- 11 Russian tidal power station is precast offsite, floated into place. (46-49) Bernstein, L.B.
- 12 Prefabricated-fin underdrain promises faster soil drainage. (50-53) Healy, K.A., et al.
- 13 Designing energy-conserving buildings. (54-58) Dallaire, G.
- 14 Concrete pavement replaced in 1½ hours. (62-64) Simonsen, J.E.
- 15 The civil engineer as politician. (65-67) Lewis, B.
- 16 Project control using CPM. (68-69) O'Brien, J.J.
- 17 What designers should know about fracture toughness. (70-71) Elliot, A.
- 18 Toward a coherent natural hazards policy. Wiggins, (74-76) J.H.

### Civil Engineering 44—5 74—5

- 19 Noise control and civil engineering. (45-49) Krokowsky, E.M., et al.
- 20 The pressure sewer : a new alternative to gravity sewers. (50-53) Carcich, I.G.
- 21 Engineering students learn social awareness at UMF. (54-57) Lamar, F.
- 22 Suspension bridge carries pipeline across canyon. (58-61) Chen, S.C. et al.
- 23 Education must orient to practice, broaden aims. (66-68) Dallaire, G.

- 24 What's new in water and sewer pipe. (72-75) Godfrey, K.A.
  - 25 Flood plain management in metropolitan Chicago. (79-81) Lanyon, R.
  - 26 Engineers Notebook : A method for specifying percentage soil compaction. (82-83) Monahan, E.J.
  - 27 Pension news roundup. (85-85)
  - 28 Railroad track relocation saves time, money. (86-87) Fry, J.G.
  - 29 Gabions guard river banks against 50,000 cfs. flow. (88-89) Lavagnino, S.
- ### Proc. of Institution of Civil Engineers 57—Part 2 74—6
- 30 An extension of the time ratio theory of sedimentation tanks. (191-203) Price, G.A.
  - 31 Local strength at column heads in flat slabs subjected to a combined vertical and horizontal loading. (205-232) Stamenković, A., et al.
  - 32 Some properties of ground granulated slag and cement. (233-250) Atwell, J.S.F.
  - 33 Applications of the finite strip method in the analysis of concrete box bridges. (251-273) Cusens, A.R., et al.
  - 34 Induced recharge using riverain wells. (275-290) Johnson, P.A., et al.
  - 35 Imperfections and the design of steel beams. (291-306) Nethercot, D.A.
  - 36 Web buckling in castellated beams. (307-320) Aglan, A.A., et al.
  - 37 Damping measurements from the dynamic behaviour of several large multi-flue chimneys. (321-329) Jeary, A.P.
  - 38 A full-scale model test of hot spots in the prestressed concrete pressure vessels of Oldbury nuclear power station. (329-331) Irving, J., et al.
  - 39 Measuring rural traffic flows in the United Kingdom. (353-365) Howe, J.D.G.F., et al.
- ### Proc. of A.S.C.E., 100—IE 3 74—7
- 40 Introduction to Four Papers on Minority Programs. (181-182) the Committee on Minority Programs
  - 41 Statement of Affirmative Action Principles. (183-189) Sinclair, B.A.
  - 42 Minority Employment—A Job for ASCE. (191-199) Cooper, S.E.
  - 43 ASCE Involvement in Social Action. (201-205) Tuttle, S.L.
  - 44 Career Guidance Programs for Minority Youth. (207-212) Moy, L.M.
  - 45 Engineering Licensure Innovations. (213-216) Wortley, C.A.
  - 46 The Making of a "Pro"—A Faculty Viewpoint. (217-223) Pletta, D.H.
  - 47 Impact of Metrication on the Construction Industry. (225-234) Clough, R.H.
  - 48 Surveyor 1984. (235-240) Austin, B.
  - 49 Evaluation of Urban Public Transportation. (241-249) Heathington, K.W.
- ### Proc. of A.S.C.E., 100—SU 1 74—5

コンピュータ  
による

# 構造工学講座

日本鋼構造協会

編

培風館

## 全巻完結 全11巻・22分冊・A5判

構造解析に画期的な変革をもたらした、マトリックス構造解析法を、はじめて体系的にまとめ最高の執筆陣による待望の書。

- I-1 A. マトリックス法とコンピュータ 戸川隼人著  
B. 有限要素法による構造解析プログラム = 考え方と解説 三本木茂夫・吉村信敏共著・¥2000
- I-2 A. 骨組構造解析入門 = FORTRAN~PL/I 信原泰夫・桜井達美共著  
B. 伝達マトリックス法 成岡昌夫・遠田良喜共著・¥2100
- I-3 A. マトリックス法材料力学 山田嘉昭著  
B. エネルギー原理入門 鷺津久一郎著・¥2300
- I-4 A. マトリックス算法概説 栖原二郎著  
B. マトリックス法振動および応答 川井忠彦著・¥2400
- II-1 A. 計算技術および数値計算法 平野晋保・戸川隼人・藤井宏・三好哲彦共著  
B. 骨組構造解析 成岡昌夫・服部正・加藤進・後藤茂夫・上田幸雄共著・¥3200
- II-2 A. 塑性・粘弾性 山田嘉昭著  
B. 有限要素法のプログラム・デザイン 信原泰夫・桜井達美・吉村信敏共著・¥2900
- II-3 A. 弾性学の変分原理概論 鷺津久一郎著  
B. 有限要素法と破壊力学 宮本博著・¥2400
- II-4 A. 動的応答解析 河島佑男著  
B. 熱伝導と熱応力 藤野勉著・¥3400
- II-5 A. 平板の曲げ理論 栖原二郎著  
B. マトリックス構造解析の誤差論 山本善之・山田善一共著・¥2900
- II-6 A. シェル構造解析 川股重也著  
B. 座屈問題解析 川井忠彦著/最新刊
- II-7 A. 薄板構造解析 = 変位法・応力法 川井忠彦・川島矩郎・三本木茂夫共著  
B. 建築建造物の自動設計と最適設計 田中尚・中村雄治共著・¥3900

☎102 東京都千代田区九段南4-3-12 TEL (03) 262-5256 振替 東京44725

- 50 Orthophotoquads for Arizona Land-Use Mapping and Planning. (1-6) Winikka, C.C., et al.
- 51 Aerotriangulation Precision Attainable for Highway Photogrammetry. (7-14) Hou, M.C.Y.
- 52 Surveying and Mapping from Orbital Platforms. (15-31) Wong, K.W.
- 53 Analysis and Prediction of Photogrammetric Residual Errors. (33-48) Rampal, K.K.
- 54 Photogrammetric Control Extension for Route Design. (49-61) Derenyi, E.E., et al.
- 55 Three-Dimensional Positioning—by Multilateration (63-78) Ball, Jr. W.E.,

構造・コンクリート

The Structural Engineer 52-4 74-4

- 56 The design of short span bridges. (109-115) Duncan, G.
- 57 The reconstruction of short span road bridges in London. (115-119) Williams, G.T.
- 58 Economic road bridge design in concrete for the medium span range 15 m~45 m. (119-128) Woolley, M.V.
- 59 The distribution of the clamping pressure in friction-grip bolted joints. (129-131) Cullimore, M.S.G. et al.
- 60 Three approaches to medieval structures. (132-132) Ruddock, E.C.
- 61 Interactive design and detailing of structural steelwork connections using a computer. (133-142) Moore, M.G. et al.
- 62 Review of highway bridge loading in Pakistan. (144-144) Salam, A.
- The Structural Engineer 52-5 74-5
- 63 Nomograms for the failure of plain concrete subjected to short-term multiaxial stresses. (151-165) Hannant, D.J.
- 64 Economic modern hospital construction at Eugene Marais Hospital, Pretoria, South Africa. (169-181) Stern, W.M.
- The Structural Engineer 52-6 74-6
- 65 Roman concrete and mortar (193-195) Davey, N.
- 66 Design for punching shear. (197-207) Regan, P.E.
- 67 Some aspects of interactive structural design. (209-213) Sawko, F., et al.
- 68 The Sydney Opera House glass walls. (216-220) Croft, D.D., et al.
- Welding Journal 53-4 74-4
- 69 TLP Bonding : a New Method for Joining Heat Resistant Alloys. (203-214) Duvrll, D.S., et al.
- 70 Welding Serves the World. (215-217) Oehler, I.A.
- 71 Electroslag Welding Speeds Shipbuilding. (218-222) Parrott, R.S., et al.
- 72 Brazing of a Dispersion Strengthened Nickel Base Alloy Made by Mechanical Alloying. (145-s-152) Kenyon, N., et al.
- 73 Weldment Fracture Toughness of an Aluminum-Copper Alloy. (153-s-160) Bjeletich, J.G. et al.
- 74 Optimization of Fillet Weld Sizes. (161-s-169) Graville, B.A., et al.

- 75 Grooved Copper Mold Testing of Inconel Alloy 600. (170-s-174) Armao, F.G., et al.
- 76 Eutectic Bonding of Boron Aluminum Structural Components. (175-s-184) Niemann, J.T., et al.
- Welding Journal 53-5 74-5
- 77 Extended Length Continuous Wire Feed Systems. (293-299) Strain, C.E., et al.
- 78 How Welding Influenced the Growth of a Corporation. (300-305) Harnischfeger, H.
- 79 Maintenance Welders : Think Smooth. (306-308)
- 80 Electron Beam Welding Solves Problem, Cuts Cost. (308-308)
- 81 No. 4 of a Series on Welding Aluminum (309-311)
- 82 Welding Studies on Arc-Cast Molybdenum. (185-s-191) Moorhead, A.J., et al.
- 83 Basis for Tubular Joint Design. (192-s-201) Marshall, P.W., et al.
- 84 Some Influence of Slag Composition on Heat Transfer and Arc Stability. (203-s-210) Patchett, B.M.
- 85 Fracture Toughness Study of a Grade 300 Maraging Steel Weld Joint. (211-s-218) Blauel, J.G., et al.
- 86 Hot Press and Roll Welding of Ti-6Al-4V with Auto-Vacuum Cleaning. (219-s-224) Holko, K.H.
- 87 Heat Treatment Effect on 2CrMo Joints Welded with a Nickel-Base Electrode. (225-s-231) Jones, W.K.C.
- Welding Journal 53-6 74-6
- 88 Application of a Smoke Extracting System for Continuous Electrode Arc Welding. (349-361) Wiehe, A.E., et al.
- 89 There is no Shortage in Corrosion. (362-362) Gartner, Jr., F.W.
- 90 Corrosion Prevention with Thermal Sprayed Zinc and Aluminum Coatings. (363-370) the AWS Committee
- 91 Flywheel Friction Welding Research, (233-s-241) Wang, K.K., et al.
- 92 Progress Toward a More Weldable A-286. (242-s-245) Brooks, J.A., et al.
- 93 Penetration Mechanisms of Electron Beam Welding and the Spiking Phenomenon. (246-s-251) Mara, G.L., et al.
- 94 Ultrasonic Longitudinal Mode Welding of Aluminum Wire. (252-s-260) Yeh, C.J., et al.
- 95 Refractory Metal Tips for Resistance-Spot Welding of Galvanized Steel. (261-s-266) Key, J.F., et al.
- 96 Subcritical Crack Growth Characteristics in Welded ASTM A 537 Steel. (267-s-271) Socie, D.F., et al.
- Inter. Jour. of Earthquake Engineering and Structural Dynamics 2-3 74-1/3
- 97 Overturning of Top Profile of Koyna Dam During Severe Ground Motion. (207-217) Saini, S.S., et al.
- 98 Accuracy of Finite Difference Representations for the Transient Response Analysis of Shells. (219-233) Underwood, P.
- 99 Seismic Analysis of Skewed Highway Bridges with Intermediate Supports. (235-248) Ghobarah, A.A., et al.
- 100 Simulation of Artificial Earthquakes. (246-269) Saragoni, G.R., et al.

好評発売中!!

月刊誌『セメント・コンクリート』No. 331 9月号

# ——コンクリート骨材特集——

B5判 約150頁 特価 700円 千45円

〔主要内容〕

■お申込みは代金を添えてセメント協会図書販売へ■

**骨材資源と需給:** わが国の骨材資源、骨材事情、河川砂利資源、欧米の骨材事情など **骨材とコンクリートの性質:** 骨材の岩石学、コンクリートの性質におよぼす骨材の影響、力学的性質と骨材、凍害と骨材など **骨材名論:** 碎石、山砂、海砂、軽量骨材、高炉スラグ碎石、化粧用骨材、超軽量骨材など **座談会:** 『これからの骨材を語る』

好評発売中!!

コンクリートパンフレット79号

## 『人工軽量骨材コンクリート』(増補改訂版)

東京都立大学教授 村田二郎 著

A5判 本文140頁 定価 500円 千80円

最近の人工軽量骨材の製造・利用技術の進歩は著しい。人工軽量骨材コンクリートの諸物性、構造物の設計・施工に関する新しい知見を盛り込んだ増補改訂版。

〔内容目次〕

- 人工軽量骨材の種類、製造方法、性質
- 軽量骨材コンクリートの性質、配合、設計・施工の要点
- 付録一関連規格、規準

セメント協会 東京都中央区京橋1丁目1番地 服部ビル4階 千104  
振替口座 東京 196803 Tel. (03)561-8631(代), 2682 (図書販売直通)

# 月刊 基礎工

絶賛発売中 B5判96ページ 定価 1部 480円 千32円  
年間 5,760円 千380円

### 編集委員会

(順不同敬称略)

<b>委員長</b>	高岡 博
<b>委員</b>	小泉 安則
建設省建築研究所長	吉田 巖
建設省関東地建宇都宮国道工事事務所長	浅間 達雄
建設省関東地建首都圏国道工事事務所長	浅間 正
運輸省港湾技術研究所土質部基礎工研究室長	沢口 純
日本道路公団技術部構造設計課長	三瀬 純
首都高速道路公団第三建設部設計課長	鈴木 貴太
帝都高速度交通営団建設本部計画部長	渡辺 健
東海大学工学部建築学科教授	吉成 元伸
日本大学理工学部建築学科教授	榎 並
早稲田大学理工学部工学研究所教授	藤田 喜久雄
鹿島建設土木本部工務部次長	堀井 陽三
㈱関取取締役研究開発局長	藤田 圭一
㈱大林組技術研究所次長	斎藤 二郎
㈱竹中工務店技術研究所長	斎藤 正明
㈱清池組技術研究部長	遠京 幸礼
白石基礎工事㈱専務取締役	白石 俊多

### 9月号 特集・最近の締切工法

<b>巻頭言</b>	締切工法の現況と要点	福岡 正巳
<b>総説</b>	締切工法の種類と選定	吉田 巖
<b>各論</b>	締切工法の設計上の諸問題	玉置 脩
	締切工法の施工上の諸問題	内藤 和彦
	締切と排水	鈴木 音彦
	ダム工事に伴う締切工法	佐藤 友光
	橋梁工事に伴う締切工法	駒田 敬一
	河川工事に伴う締切工法	井上 章平
	干拓(潮留)工事に伴う締切工法	高野 洋二
	鋼矢板と鋼管矢板	望月 博正
<b>報文</b>	鋼矢板による皇居内濠・外濠の締切掘削	小西・宮原
	毛馬排水機場における鋼管矢板による締切工法	倉益 増衛
	甲浦大橋下部工のコレゲートセルによる締切工法	神田 一雄
	平戸大橋下部工のコンクリートセルラップブロックにおける締切工法	坂本 良一
	東海道線神崎川における締切工法を用いた橋脚のとりかえ工事	桑原 彌助

「基礎工」は創刊号からご購読下さい

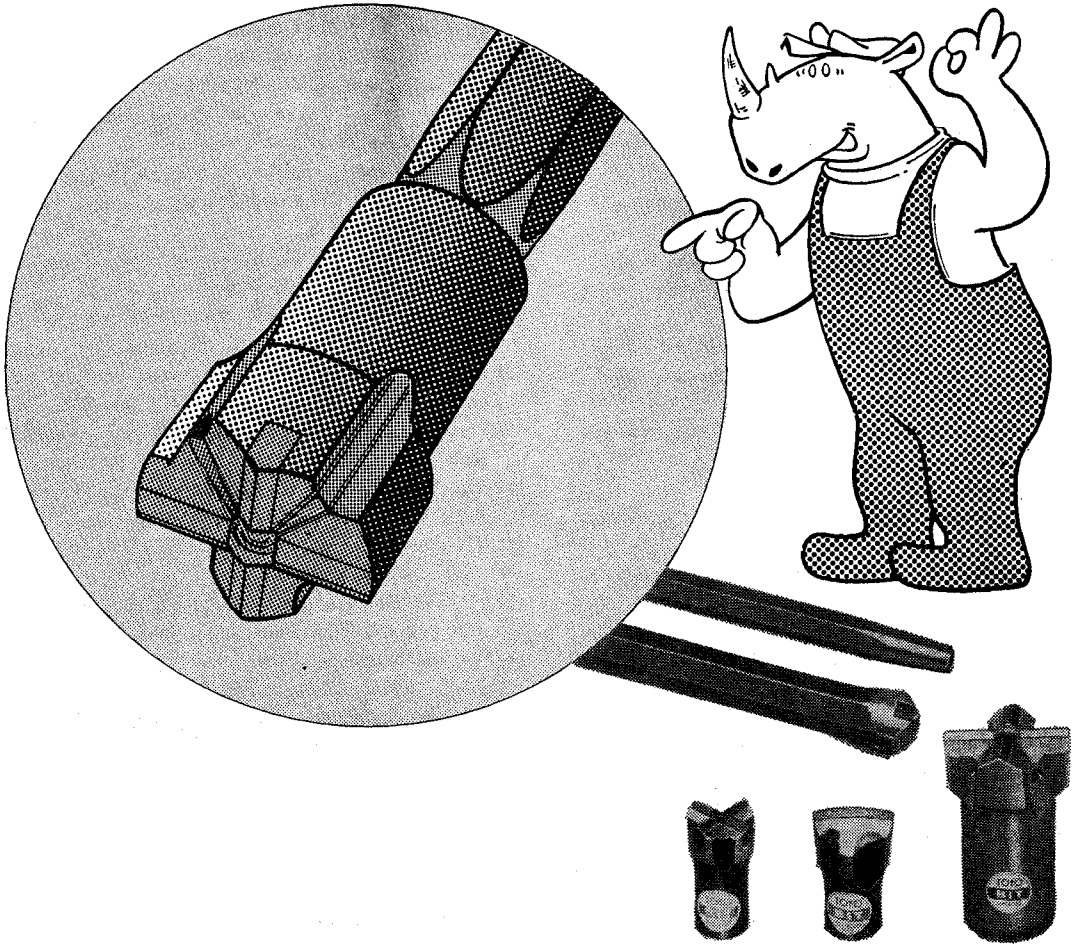
48年6月号 ■大径PCくいの開発と施工	49年2月号 ■掘切り工事の諸問題
" 7月号 ■地下連続壁工法を探る	" 3月号 ■最近の基礎工専用機械
" 8月号 ■水中ケーソン工法の現状	" 4月号 ■アンカー工法の現状と展望
" 9月号 ■地盤改良工法の現状	" 5月号 ■既製鉄筋コンクリートくい
" 10月号 ■鎖くいをを用いた基礎工	" 6月号 ■排水工事の諸問題
" 11月号 ■地中構造物と基礎工	" 7月号 ■地盤調査と現場試験
" 12月号 ■場所打ちくい工法	" 8月号 ■深礎工法の諸問題
49年1月号 ■基礎工最近の話題	(以上各号1部480円)

(以上各号1部350円)

総合土木研究所 東京都千代田区三崎町2-18-5 京三会館 101  
TEL (03)264-5208(代表) 振替 東京119965

- 101 Dynamic Analysis of Column-Supported Hyperboloidal Shells. (269-279) Gould, P.L., et al.
- 102 Calculation of Selected Ordinates of Fourier Spectra. (281-293) Jennings, P.C.
- Inter. Jour. of Earthquake Engineering and Structural Dynamics 2-4 74-4/6**
- 103 Minimal Structural Response under Random Excitation Using the Vibration Absorber. (303-312) Wirsching, P. H., et al.
- 104 Earth Dam-Foundation Interaction During Earthquakes. (313-323) Idris, I.M., et al.
- 105 Inelastic Dynamic Analysis of Tall Buildings. (325-342) Meyer, C.
- 106 The Seismic Response of a Reinforced Concrete Bridge Pier Designed to Step. (343-358) Beck, J.L. et al.
- 107 Time and Amplitude Dependent Response of Structures (359-378) Udawadia, F.E., et al.
- 108 Fatigue Failure Characteristics of Some Models of Jointed Rock. (379-386) Brown, E.T., et al.
- Jour. of Fluid Mechanics 63-Part 2 1974-4-3**
- 109 Some properties of truncated turbulence signals in bounded shear flows. (209-224) Brodkey, R.S., et al.
- 110 A numerical study of the roll-up of a finite vortex sheet. (225-235) Moore, D.W.
- 111 Vortex pairing: the mechanism of turbulent mixing-layer growth at moderate Reynolds number. (237-255) Winant, C.D., et al.
- 112 Unsteady current-induced perturbation of a magnetically contained agnetohydrodynamic flow. (273-299) Chee-Seng, L.
- 113 The spectral evolution of sedimentary bed forms. (301-314) Jain, S.C., et al.
- 114 An investigation of the topography and motion of the turbulent interface. (315-343) Paizis, S.T., et al.
- 115 Measurements in the thick axisymmetric turbulent boundary layer near the tail of a body of revolution. (345-367) Patel, V.C., et al.
- 116 Experiments on the behaviour of an axisymmetric turbulent boundary layer with a sudden circumferential strain. (369-413) Bissonnette, L.B., et al.
- Jour. of Fluid Mechanics 63-Part 3 74-4-29**
- 117 Finite amplitude side-band stability of a viscous film. (417-429) Lin, S.P.
- 118 The hypersonic laminar boundary layer near sharp compression and expansion corners. (431-447) Bloy, A. W., et al.
- 119 The effect of mean compression or dilation on the turbulence structure of supersonic boundary layers. (449-464) Bradshaw, P.
- 120 Upstream propagation of unsteady disturbances in supersonic boundary layers. (465-485) Schneider, W.
- 121 The stability of pendent liquid drops. Part 2. Axial symmetry. (487-508) Pitts, E.
- 122 Near-resonant forcing in a shallow two-layer fluid: a model for the internal surge in Loch Ness? (509-527) Thorpe, S.A.
- 123 On the nonlinear evolution of three-dimensional disturbances in plane Poiseuille flow. (529-536) Davey, A., et al.
- 124 Conical flow near singular rays. (537-561) Zahalak, G.I., et al.
- 125 Onset of cellular convection in a salinity gradient due to a lateral temperature gradient. (563-576) Chen, C.F.
- 126 Two-dimensional effects in double-diffusive convection. (577-592) Turner, J.S., et al.
- 127 On the stability of a magnetically driven rotating fluid flow. (593-605) Richardson, A.T.
- 128 Hydromechanics of low-Reynolds-number flow. Part 1. Rotation of axisymmetric prolate bodies. (607-622) Chwang, A., et al.
- Jour. of Fluid Mechanics 63-Part 4 74-5-15**
- 129 The radiation and scattering of surface waves by vertical barriers. (625-634) Porter, D.
- 130 The structure of jets of water and polymer solution in air. (635-640) Hoyt, J.W., et al.
- 131 Numerical and asymptotic solutions for the supersonic flow near the trailing edge of a flat plate at incidence. (641-656) Daniels, P.G.
- 132 The meniscus on the outside of a small circular cylinder. (657-664) James, D.F.
- 133 On magnetohydrodynamic flows generated by an electric current discharge. (665-671) Sozou, C.
- 134 Perturbed turbulent flow, eddy viscosity and the generation of turbulent stresses. (673-693) Davis, R.E.
- 135 Finite-amplitude thermal convection in a spherical shell. (695-721) Young, R.E.
- 136 The inviscid nonlinear instability of parallel shear flows. (723-752) Robinson, J.L.
- 137 The stability of a trailing line vortex. Part 1. Inviscid theory. (753-763) Lessen, M., et al.
- 138 Finite-amplitude neutral disturbances in plane Poiseuille flow. (765-771) George, W.D., et al.
- 139 On the interaction of internal waves and surface gravity waves. (773-800) Lewis, J.E., et al.
- 140 Nonlinear interactions among standing surface and internal gravity waves. (801-825) Joyce, T.M.
- Jour. of Fluid Mechanics 64-Part 1 74-6-3**
- 141 On the development of dunes in erodible channels. (1-16) Fredsoe, J.
- 142 On the rapid rotation of a massive sphere in a monatomic gas. (17-31) Foster, M.R.
- 143 On the propulsion of micro-organisms near solid boundaries. (33-49) Katz, D.F.
- 144 Large amplitude convection in porous media. (51-63) Straus, J.M.
- 145 The stability of a thermally radiating stratified shear layer, including self-absorption. (65-83) Dudis, J.J.
- 146 An analysis of flow through sudden enlargements in pipes. (85-95) Teyssandier, R.G., et al.
- 147 On optimum design in fluid mechanics. (97-110) Pironneau, O.
- 148 Low Reynolds number flow over a plane symmetric sudden expansion. (111-128) Durst, F., et al.
- 149 A numerical study of turbulence transitions in con-

# よいビット・ロッドの 条件を考える




さく岩機の性能を、より有効に生かすためには、ビットロッドの性能もそれに伴わなければなりません。良いビット・ロッドとは、使用命数の増大、さく孔速度の上昇、労力経費の減少、消費動力の節減、製品の均一性などの条件を備えていることです。


トヨービット・ロッドは、掘進機械に対する多年の経験と、つねにビット・ロッド、さく岩機の性能を一貫して研究し、このつながりをもっとも有効に生かすよう設計されていますので安心してご使用ください。

## トヨービット・ロッド

発売元

 東洋さく岩機販売株式会社

東京本・支店：東京都中央区日本橋3-11-2  
支店・営業所：大阪・名古屋・福岡・札幌・仙台・高松・広島

製造元  東洋工業株式会社

- vective flow. (129-165) Daly, B.J.
- 151 An experimental study of the flow of thin liquid sheets in hot atmospheres. (167-175) Clark, C.J., et al.
- 152 The formation of atmospheric fronts downstream in a deformation field. (177-194) Hoskins, B.J.
- 153 Turbulent shear flow mixing and rapid chemical reactions: an analogy. (195-206) Lin, C.H., et al.
- Jour. of Fluids Engineering (Trans. ASME Series I) 96—1 74—3**
- 154 Improvement of the Performance of Conical Diffusers by Vortex Generators. (4-10) Senoo, Y., et al.
- 155 An Experimental Investigation of the Transitory Stall Regime in Two-Dimensional Diffusers. (11-15) Smith, Jr., C.R., et al.
- 156 Filed Investigation and Reduction of Wicket Gate Vibration in a Francis-Tybe Reversible Pump/Turbine. (16-20) O'Brien, J. T., et al.
- 157 Nozzle Discharge Coefficients—Compressible Flow. (21-24) Olson, A.T.
- 158 A Note on the Unsteady Cavity Flow in a Tunnel. (25-28) Kim, J.H., et al.
- 159 Flow Regime Definition for Flow Between Corotating Disks. (29-34) Pater, L.L., et al.
- 160 Supercavitating Linear Cascades With Rounded Noses. (35-42) Furuya, O.
- 161 Experimental Investigation of the Vortex Street Generated by a Plane Jet in a Counter Flow. (43-48) Robillard, L., et al.
- 162 Similarity Solution for the Interaction of a Potential Vortex With Free Stream Sink Flow and a Stationary Surface. (49-54) Hoffman, J.A.
- 163 A Modern Laboratory for Hydraulic Turbine and Pump/Turbine Model Performance Testing. (55-61) Frey, G.R., et al.
- 164 Turbulent Flow in the Entry Region of a Rough Pipe. (62-68) wang, J.S., et al.
- Jour. of Fluids Engineering (Trans. ASME Series I) 96—2 74—6**
- 165 A Method of Measuring Three-Dimensional Rotating Wakes Behind Turbomachinery Rotors. (87-91) Lakshminarayana, B., et al.
- 166 Confined Mixing of Multiple Jets. (92-96) Fabris, G., et al.
- 167 Interfacial Shear in Two-Phase Wavy Flow in Closed Horizontal Channels. (97-102) Kordyban, E.
- 168 Laterally Integrated Numerical Water Quality Model for an Estuary. (103-110) Spaulding, M.L.
- 169 Discharge Coefficient Correlations for Circular-Arc Venturi Flowmeters at Critical (Sonic) Flow. (111-123) Arnberg, B.T., et al.
- 170 Metering Performance Investigation and Substantiation of the "Universal Venturi Tube" (U.V.T.) Part 1—Hydraulic Shape and Discharge Coefficient. (124-131) Halmi, D.
- 171 Metering Performance Investigation and Substantiation of the "Universal Venturi Tube" (U.V.T.) Part 2—Installation Effect, Compressible Flow, and Head Loss. (132-138) Halmi, D.
- 172 A Comparison Between Orifice and Flow Nozzle Laboratory Data and Published Coefficients. (139-149) Miller, R.W., et al.
- 173 Improved Expansion Factors for Nozzles, Orifices, and Variable-Area Meters. (150-157) Head, V.P.
- 174 An Analytical Procedure of Calibration for the Pulsed Ultrasonic Doppler Flow Meter. (158-167) Jorgensen, J.E., et al.
- 175 Fluid Dynamics of Particle (Platelet) Deposition for Filtering Walls: Relationship to Atherosclerosis. (68-172) Forstrom, R.J., et al.
- 176 The Determination of Wall Friction for Vertical and Horizontal Two-Phase Bubbly Flows. (173-179) Davis, M.R.
- Jour. of Applied Mechanics (Trans. ASME Series E) 41—1 74—4**
- 177 On Steady and Pulsatile Flow of Blood. (1-7) Airiman, T., et al.
- 178 A Theory of Elasticity of the Lung. (8-14) Fung, Y.C.
- 179 Applicability of Mixing Length Theory to Turbulent Boundary Layers Beneath Intense Vortices. (15-19) Chi, S.W., et al.
- 180 The Prediction of Axisymmetric Turbulent Boundary Layer in Conical Nozzles. (20-24) Au, S.B.
- 181 Boundary Conditions for the Turbulent Mixing Layer Between Two Parallel Streams. (25-28) Unny, T.E., et al.
- 182 Influence of Enveloping Water Layer on the Rise of Air Bubbles in Newtonian Fluids. (29-34) Mercier, J.L., et al.
- 183 Impulsive Motion in a Particle-Fluid Suspension Including Particulate Volume, Density, and Migration Effects. (35-41) DiGiovanni, P.R. et al.
- 184 Internal Hypersonic Flow. (42-44) Lin, T.C., et al.
- 185 On the Friction Reducing Non-Newtonian Flow Around an Enclosed Disk. (45-50) Bilgen, E., et al.
- 186 Static Determinacy in the Theory of Finite Width Foil Bearings. (51-54) Langlois, W.E.
- 187 The Dynamic Behavior of Articulated Pipes Conveying Fluid With Periodic Flow Rate. (55-62) Bohn, M.P., et al.
- 188 Experimental Determination of the Transient Uniaxial Stress in a Bar by Dynamic Photoplasticity. (63-70) Chase, K.W., et al.
- 189 Pulse Propagation in Straight and Curved Beams—Theory and Experiment. (71-76) Crowley, III, F.B., et al.
- 190 Dynamic Stability of Transverse Axisymmetric Waves in Circular Cylindrical Shells. (77-82) Ginsberg, J.H.
- 191 Radial Propagation of Axial Shear Waves in a Finately Deformed Elastic Solid. (83-88) Kurashige, M.
- 192 Experimental Verification of Dispersion Relations for Layered Composites. (89-91) Robinson, C.W., et al.
- 193 Time-Harmonic Waves Propagating Normal to the Layers of Multilayered Periodic Media. (92-96) Nayfeh, A.H.



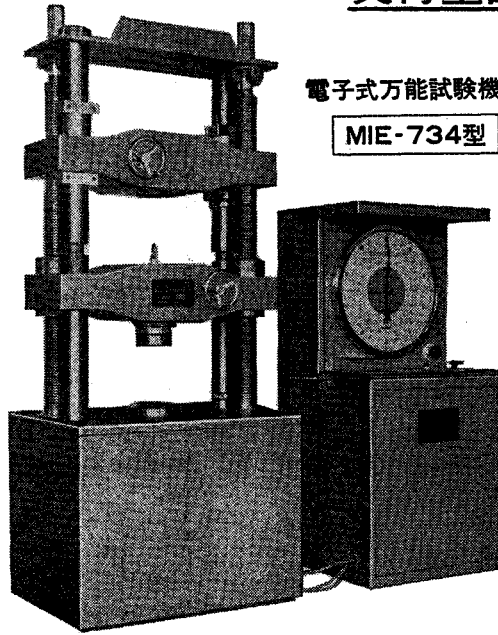
MARUI  
創業50年

電気・油圧サーボシステム・自記計測のマルチ

1UP&UP

## 新しい万能材料試験機

電子式  
実荷重計測式



電子式万能試験機

MIE-734型

### 計測機構と負荷機構の分離

直接計測して、従来の間接的計測の不可抗力的要素を省きました。

- ※ 負荷荷重の検出は特殊型ロードセル
- ※ 温度変化除く特殊電気回路
- ※ 特殊ロードセルは引張強度の1/2以下で使用
- ※ 荷重負荷は多連式ポンプにて行う
- ※ 計測指示は自動平衡装置利用

### 電子式?

特殊ロードセル方式のための  
完全な電子式機構

特殊ロードセルは、D・T・Fを利用精度0.1μ  
指針の動きはタコゼネレーターによる自動平  
衡方式。このように計測はすべて電子回路を  
駆使しています。

### 実荷重計測

多くの利点を  
生みだします。

- ① 正確な計測
- ② 故障発生減少
- ③ 操作簡単
- ④ 感度上昇
- ⑤ 再現性いちじるしい
- ⑥ 負荷中レンジ切換えできる
- ⑦ 「0」調容易になった
- ⑧ 応答性早く0.5秒以内
- ⑨ 破断ショック影響受けない
- ⑩ 自記自動化が容易になった

油圧系統は負荷するだけ  
計測値は関係ありません。

※ 詳細ご二報下さい。  
すぐ参上します。

—自記自動化のトップをめざす—

株式会社

丸井製作所

営業品目

土質試験機	非破壊試験機
アスファルト試験機	温調試験機
コンクリート試験機	水理試験装置
セメント試験機	材料試験機



MARUI

株式会社

マルイ

—信頼を旨とす—

東京営業所  
〒105  
大阪営業所  
〒536  
九州営業所  
〒812

東京都港区芝公園2-9-12  
大阪市城東区蒲生町4-15  
福岡市博多区比恵町4-17  
日高ビル

TEL 東京 (03) 434-4717(代)  
テレックス東京 242-2670  
TEL 大阪 (06) 931-3541(代)  
テレックス大阪 529-5771  
TEL 福岡 (092) 411-0985



- 194 Propagation of Low-Frequency Elastic Disturbances in a Composite Material. (97-100) Kohn, W.
- 195 A General Continuum Theory With Microstructure for Wave Propagation in Elastic Laminated Composites. (101-105) Hegemier, G.A., et al.
- 196 A Continuum Approach to the Propagation of Shear Waves in Laminated Wave Guides. (106-110) Nayfeh, A.H., et al.
- 197 A Numerical Study of Plane Longitudinal Waves in a Nonlinear Viscoelastic Material. (111-116) Blake, T.R., et al.
- 198 Reflection and Refraction of Weak Elastic-Plastic Waves. (117-123) Jahsman, W.E.
- 199 Shock Pressure in Oblique Impact—A Theoretical Analysis. (124-138) Ake Persson, C.
- 200 Vibration of Cable Gridworks With Small Initial Deformation. (131-136) Afshari, H., et al.
- 201 Feasibility of Two-Dimensional Numerical Analysis of the Split-Hopkinson Pressure Bar System. (137-144) Bertholf, L.D.
- 202 Magnetoelastic Buckling of Thin Magnetically Soft Plates in Cylindrical Mode. (145-150) Dalrymple, J.M., et al.
- 203 Lower Bounds for the Buckling Loads and the Fundamental Frequencies of Elastic Bodies. (151-154) Popelar, C.H.
- 204 Postbuckling Behavior of Unsymmetrically Layered Anisotropic Rectangular Plates (155-162) Chia, C.Y., et al.
- 205 On Approximations of the Buckling Stresses of Axially Compressed Cylinders. (163-167) Dym, C.L.
- 206 On Pure Bending and Stretching of Orthotropic Laminated Cylindrical Shells. (168-172) Reissner, E., et al.
- 207 On the Derivation of Shell Theories Direct Approach. (173-176) Green, A.E., et al.
- 208 A Refined Theory for Laminated Orthotropic Plates. (177-183) Nelson, R.B., et al.
- 209 On Bending of a Crystal to a Cylindrical Surface. (184-188) Havner, K.S.
- 210 Contact of Inflated Membranes With Rigid Surfaces. Callegari, A.J., et al.
- 211 Large Deformations of Circular Rings Under Nonuniform Normal Pressure (192-196) Seide, P., et al.
- 212 Plane Solutions for the Displacement and Traction-Displacement Problems for Anisotropic Elastic Wedges. (197-202) Kou, M.C., et al.
- 213 Plane Solutions for Traction Problems on Orthotropic Unsymmetrical Wedges and Symmetrically Twinned Wedges. (203-208) Kou, M.C., et al.
- 214 Thin Inclusions and Cracks in Anisotropic Media. (209-214) Mura, T., et al.
- 215 Multiple Circular Inclusion Problems in Plane Elastostatics. (215-221) Yu, I.W., et al.
- 216 Thermal Stresses in an Orthotropic Elastic Slab Due to Prescribed Surface Temperatures. (222-228) Tauchert, T.R., et al.
- 217 Thermal Response of a Viscoelastic Rod Under Cyclic Loading. (229-233) Mukherjee, S.
- 218 Quasi-Static Extension of a Tensile Crack Contained in a Viscoelastic Solid. (234-242) Wnuk, M.P.
- 219 Incompressible and Linearly Compressible Viscoelastic Creep and Relaxation. (243-248) Findley, W.N., et al.
- 220 Generalized Initial Yield Surfaces for Unidirectional Composites. (249-253) Dvorak, G.J., et al.
- 221 On Finite Elastic-Plastic Deformation of Metals. (254-260) Naghdi, P.M., et al.
- 222 Numerical Integration of Shell Equations Using the Field Method. (261-266) Cohen, G.A.
- 223 Lower Bounds to Eigenvalues by Planelike Surfaces. (267-268) Pnueli, D.
- 224 Evaluation of Error Bounds in an Optimization Problem Using the Finite-Element Method. (269-272) Buturla, E.M., et al.
- 225 Stable Harmonic and Subharmonic Oscillations of a System With Piecewise Linear Restoring Forces. (273-277) Fu, C.C.
- 226 On the Application of Liapunov's Direct Method to Linear Lumped-Parameter Elastic Systems. (278-294) Walker, J.A.
- Jour. of Engineering Materials and Technology (Trans. ASME Series H) 96-2 74-4**
- 227 Effect of Salt Water Temperature on the Crack Growth Characteristics of 12 Chrome Steel. (81-87) Eisenstadt, R.E., et al.
- 228 Failure of a Twistdrill. (88-90) Smith, C.O.
- 229 A Fracture Theory for Brittle Anisotropic Materials. (91-96) Priddy, T.G.
- 230 Elasto-Plastic Indentation of a Layered Medium. (97-103) Kennedy, F.E., et al.
- 231 Prediction of Inelastic High Temperature Materials Behavior by Strain-Rate Approach. (104-106) Berkovits, A.
- 232 Notch Sensitivity, Mechanical, and Microstructural Characteristics of TD-NiCr at Elevated Temperatures. (109-114) Willson, D.J., et al.
- 233 The Effect of Slow-Constant Strain Rates on the Tensile Properties of Selected Alloys at Room and Elevated Temperatures. (115-122) Dotson, C.L.
- 234 Empirical Equations for Describing the Strain-Hardening Characteristics of Metals Subjected to Moderate Strains. (123-126) Adams, C. and J.G. Beese
- 235 Forces Produced by Ground Contact Rotational Orthotic Devices. (127-130) Rodenberger, C.A.
- 236 Cells on Porous Substrates In Vitro. and In Vivo (131-137) Ansevin, K.D.
- 237 Application of the CO<sub>2</sub> Laser to Thermal Properties Measurements in Biomaterials. (138-142) Hansen, W.P., et al.
- Jour. of the American Concrete Institute 71-4 74-4**
- 238 Proposed Revision of ACI 211-65: Recommended Practice for Selecting Proportions for No-Slump Concrete (153-170) ACI Committee 211

# 《橋の補修》

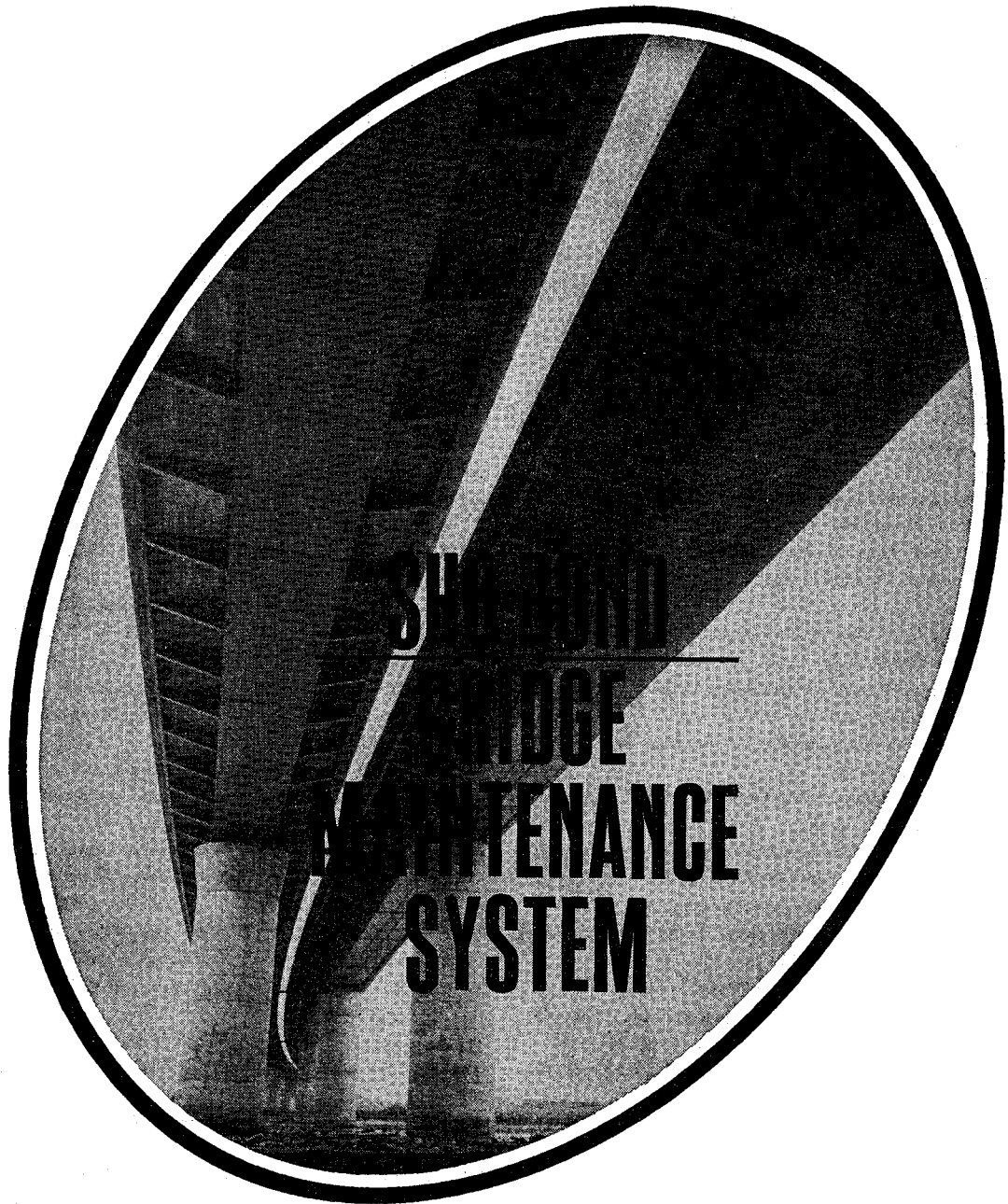
橋台・橋脚・支承座面・桁  
床版・伸縮装置の補修

産業動脈の重要構造物である《橋》の維持・補修は現在の交通事情からみても、施工上多くの問題をかかえています。

これを解決するものは、新しい工法・技術です。

ショーボンドの橋梁補修工法は

- 交通開放下、昼夜いつでも施工できます。
- 主な使用材料はエポキシ樹脂ですから、急速施工が可能です。
- 他のいろいろな工法に比べて工費を節減できます。



株式会社 **ショーボンド**

建設大臣許可(般-48)第1345号 資本金：2億円  
本社：東京都千代田区神田小川町2-1 ☎03(292)1841

- 239 Analysis and Design of Reinforced Concrete Bridge Structures. 443 (171-200) ACI Committee  
**Jour. of the American Concrete Institute** 71—5 74—5
- 240 Which the Days Never Know. (237-245) Philleo, R.E.
- 241 Response of a Reinforced Concrete Section to Two-Dimensional Curvature Histories. (246-250) Aktan, A.E., et al.
- 242 Field Test of a Curved Prestressed Concrete Bridge and Comparison with Model Tests. (251-256) Chung, H.W., et al.
- 243 New Reinforcing Materials in Concrete. (257-262) Shah, S.P.  
**Concrete** 8—4 74—4
- 244 Arched approach to Mersey Kingsway Tunnel. (22-25) Robertson, J.E.
- 245 Not quite concrete. (31-31) Robinson, K.
- 246 The future of prestressed concrete in buildings. (38-38) Gordon, A.
- 247 British building examples 1970-74 (39-42) O'Leary, E.
- 248 Prestressed concrete bridges 1970-74. (45-49) Brown, P.
- 249 Outstanding structures. (51-54) Hansen, F.  
**Concrete** 8—5 74—5
- 250 Not quite concrete. (32-32) Robinson, K.
- 251 Computer graphics in civil engineering. (33-33) Curtis, D.
- 252 Compactability of steel fibre reinforced concrete. (34-35) Mangat, P.S., et al.
- 253 Current Practice Sheet—Fatigue. (43-45) Bennett, E.W.  
**Jour. of the Prestressed Concrete Institute** 19—3 74—5, 6
- 254 Giant Precast Prestressed Girder Bridge Erected Using Special Launching Technique (18-29) Gentilini, B., et al.
- 256 Design Considerations for a Precast Prestressed Apartment Building—Introduction. (30-52)
- 257 Design Considerations for a Precast Prestressed Apartment Building—Design of Secondary Floor Members. (32-52) Barrett, M.H., et al.
- 258 Floor and Ceiling Assembly Consisting of Prestressed Precast Concrete Double the Units with a Wallboard Ceiling. (53-73) Underwriters' Laboratories, Inc.
- 259 Post-Tensioned Flat Plate to Column Connection Behavior. (74-91) Smith, S.W., et al.
- 260 Test to Failure of a Prestressed Concrete Bridge. (92-103) Burdette, E.G., et al.
- 261 Embedded Structural Steel Con. (104-112) Raths, C.H.  
**Cement and Concrete Reserch** 3—5 73—9
- 262 Studies on the Hydration of Tricalcium Silicate Pastes. II. Strength Development and Fracture Characteristics. (497-506) Berger, R.L., et al.
- 263 Suspension Hydration of  $C_3S$  at Constant pH. II. Effect of Previously Formed Hydrates and of Additives. (509-520) McCurdy, K.G., et al.
- 264 Alkali-Aggregate Reaction in Nova Scotia. IV. Character of the Reaction. (521-535) Gillott, J.E.
- 265 On Crack Direction in Relation to Griffith's Bi-Axial Failure Criterion. (537-547) Clyde, D.H.
- 266 Luminescence et hydratation du silicate tricalcique. (549-560) Fierens, P., et al.
- 267 Surface Area and Pore Structure of Compressed Low-Porosity Cement Pastes. (561-573) Mikkhail, R.Sh., et al.
- 268 A Mössbauer Study on the Hydration of Brownmillerite. (575-581) Tamás, F.D., et al.
- 269 A Numerical Approach to the Complete Stress-Strain Curve of Concrete. (583-599) Popovics, S.
- 270 Observation of an Electromechanical Effect of Hardened Cement Paste. (601-605) Wittmann, F.H.
- 271 The Influence of Additives upon the Hydration of the Mixture of 11  $CaO \cdot 7 Al_2O_3 \cdot CaF_2$ , 3  $CaO \cdot SiO_2$  and  $CaSO_4$  at 20°C (607-624) Uchikawa, H., et al.
- 272 Determination of the Standard Free Energies of Formation of Calcium Hydroaluminates. (625-632) Nikushchenko, V.M., et al.
- 273 The Influence of Age at Time of Loading on Basic and Drying Creep. (633-644) Niyogi, A.K., et al.  
**Cement and Concrete Research** 4—1 74—1
- 274 Changes to Structure of Hydrated Portland Cement on Drying and Rewetting Observed by Helium Flow Techniques. (1-11) Feldman, R.F.
- 275 The Effect of Sand Grading on the Calcium Silicate Brick Reaction. (13-29) Purton, M.J.
- 276 Interne Spannungen Sowie Schwind- und Temperaturdeformationen des Betons. (31-44) Nielsen, L.F.
- 277 Conduction Calorimetric Studies of the Effect of Sulphate on the Hydration Reactions of Portland Cement. (45-55) Smith, M.A., et al.
- 278 Some Properties of Poly (methyl Methacrylate) Impregnated Asbestos-Cement Materials. (57-68) Kosi, V.
- 279 Carbonation of Hydrated Calcium Silicates. (69-76) Maycock, J.N., et al.
- 280 Polyethylene Film as Concrete Curing Material in a Tropical Climate. (77-85) Berhane, Z.
- 281 Morphology of the So-Called Prismatic Phase in Portland Cement Clinker. (87-97) Maki, I.
- 282 Properties of Concrete with Cement Clinker Aggregate. (99-112) Berger, R.L.
- 283 Contribution to the Hydration of Expansive Cement on the Basis of Metakaolinite. (113-122) Matousek, M., et al.
- 284 Properties of Autoclaved and Thermally Treated Moulds Made from  $\gamma-Ca_2SiO_4$  and Quartz at C/S Ratios 0.5 to 1.5. (123-132) Jernejčič, J., et al.  
**Cement and Concrete Research** 4—2 74—3
- 285 The Mechanism of Frost Damage in Hardened Cement Paste. (139-147) Beaudoin, J.J., et al.
- 286 Effect of Carbonation on Microstructural Properties of Cement Stone. (149-154) Pihlajavaara, S.E., et al.
- 287 A Study of the State of Water and Stoichiometry of Bottle-Hydrated  $Ca_3SiO_5$ . (155-166) Feldman, R.F., et al.
- 288 Réalisation de lames ultraminces de mortier pour observation directe au microscope électronique par transmission. (167-176) Javelas, R., et al.

首都高速道路 八重洲トンネルで換気に活躍！

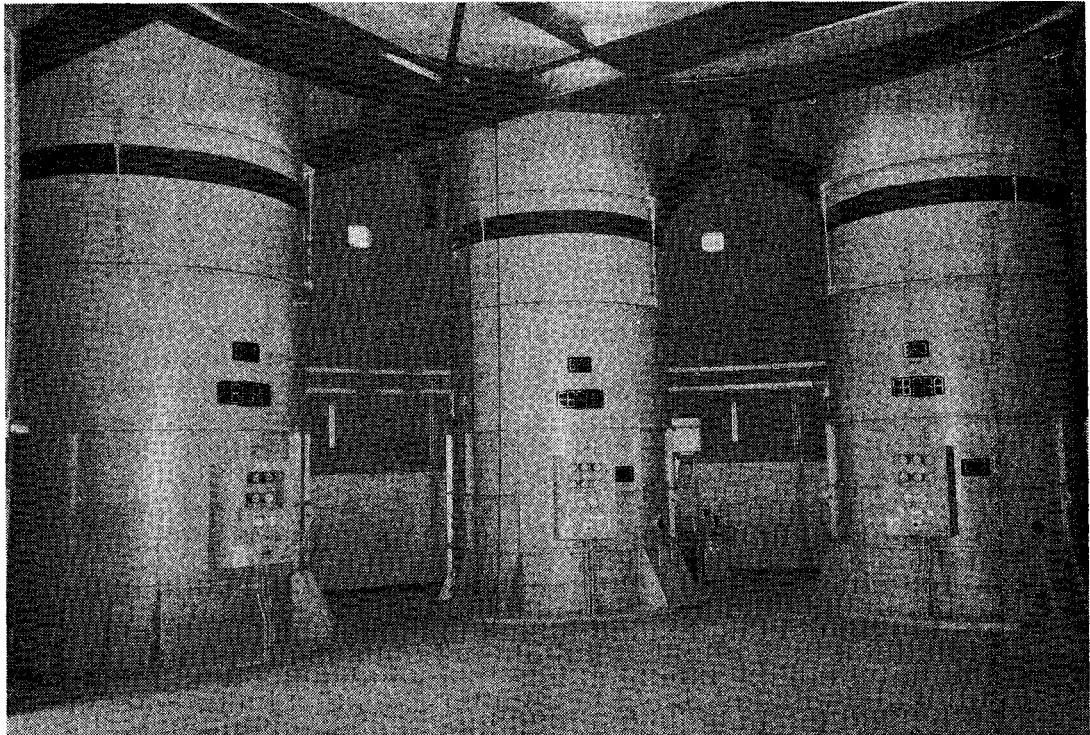


鍛冶橋換気所

# エハラ軸流送風機

口径3,000 mm 6台鍛冶橋換気所設置

48年2月に開通した首都高速道路八重洲トンネルは、鍛冶橋と常盤橋とを結ぶ延長約1.5kmの自動車専用トンネルで、都心の地下街・駐車場・地下鉄などと立体的に交錯する複雑な立地条件にあり、完全な換気と防火を要求されております。本トンネルの換気設備のうち当社は鍛冶橋地区を担当し開通以来順調に稼動中で、ここを利用する毎時2~3,000台の自動車の安全を守っております。



型式：No.30AEGMエハラ立型軸流送風機  
全圧：80mmAq(20°C, 760mmHgにて)  
電動機：特種籠型開放防滴 出力135/60kW,  
極数6/8P(極数変換)

台数：送風機×3台、排風機×3台  
口径：3,000mm $\phi$   
空気量：110m<sup>3</sup>/S



## 荏原製作所

本社：東京都大田区羽田旭町 (03)741-3111  
東京事務所：東京都中央区銀座6丁目 朝日ビル (03)572-5611  
大阪支社：大阪府北区中之島2丁目 新朝日ビル (06)203-5441  
営業所：名古屋・福岡・札幌・仙台・広島・新潟・高松

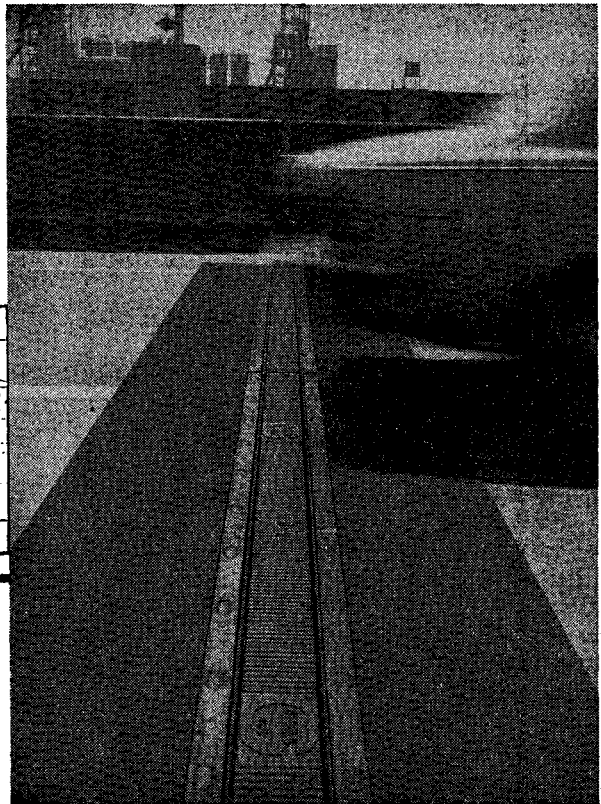
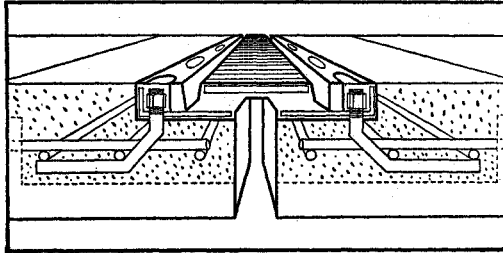
- 289 Exploratory Studies of the Utilization of Sulfur in Autoclaved Products. (177-192) Beaudoin, J.J., et al.
- 290 Hydration Reactions in Pastes  $C_3S+C_2A+CaSO_4 \cdot 2aq$  + Water at 25°C. II. (193-202) Corstanje, W.A., et al.
- 291 A Study of the Microstructure and Hydration Characteristics of Tricalcium Silicate in the Presence of Calcium Chloride. (203-221) Traetteberg, A., et al.
- 292 Embeddable Strain Gage Units for Measuring Strains in Concrete. (223-230) Klink, S.A.
- 293 Flexural Behaviour of Plain and Reinforced Lightweight Aggregate Concrete Beam up to 600°C. (231-237) Sullivan, P.J.E. et al.
- 294 Uber Die Brennbarkeit von Zementrohmehlen. (239-246) Ludwig, U., et al.
- 295 The Role of the Interface in Glass Fibre Reinforced Cement. (247-266) Majumdar, A.J.
- 296 Sulphur-Impregnated Concrete, SIC. (269-277) Thaulow, N.
- 297 Low Pressure Steam Hydration of Tricalcium Silicate. (279-288) Alunno-Rossetti, V., et al.
- 298 Einige Probleme des Einsatzes von Mahlhilfsmitteln in der Zementindustrie. (289-296) Scheibe, W., et al.
- 299 Hydration of Low Porosity Slag-Lime Pastes. (299-312) Abo-El-Enein, S.A., et al.
- 300 A Theory for the Flexural Strength of Steel Fiber Reinforced Concrete. (313-325) Swamy, R.N., et al.
- 301 Internal Morphology of a Fiber-Reinforced Cement. (327-333) Murat, M.
- Cement and Concrete Research 4-3 74-5**
- 302 The Effect of Admixtures on Length Change Anomalies due to Slow Cooling and Warming of Hardened Cement Paste. (347-356) Beaudoin, J.J., et al.
- 303 The Library and Documentation Service of the Concrete Research Laboratory Karlstrup. (357-366) Andersen, M.E.
- 304 The Effect of Sorption on the Tensile Creep and Strength Reduction of Desiccated Concrete. (367-379) Cook, D.J. et al.
- 305 Etude par thermoluminescence de l'hydratation de l'aluminate tricalcique. (381-387) Fierens, P., et al.
- 306 On the Significance of Electroosmosis in Hardened Cement Paste. (389-397) Wittmann, F.H., et al.
- 307 Mercury Porosimetry of Hardened Cement Paste Cured or Stored at 97°C. (399-404) Sellevold, E.J.
- 308 The Effect of Chlorides on Concrete in Hot and Arid Regions. (405-416) Ben-Yair, M.
- 309 Hydration Reactions in Pastes  $C_3S+C_2A+CaSO_4 \cdot 2aq$  + water at 25°C. III. (417-431) Corstanje, W.A., et al.
- 310 Physicochemical Principles of Production Melted Clinkers of Low Ferric and Aluminium Oxide Contents. (433-440) Dilaktorski, N., et al.
- 311 Influence of Precuring on High Pressure Steam Hydration of Tricalcium Silicate in the Presence of Other Constituents of Portland Cement. (441-449) Chiochio, G., et al.
- 312 Influence of Fiber Geometry on the Properties of Steel Fiber Reinforced Concrete. (451-465) Swamy, R.N., et al.
- al.
- 313 Effect of Hydration on the Mechanical Properties of Epoxy Impregnated Concrete. (467-476) Whiting, D.A., et al.
- 水理・水文・衛生・港湾・発電 ———
- Proc. of A.S.C.E., 100-HY 5 74-5**
- 314 National Weather Service River Forecasting System. (621-630) Monro J.C., et al.
- 315 Flow-Induced Vibration of Vertical-Lift Gate. (631-644) Hardwick J.D.
- 316 Dam Collapse Wave in a River (645-665) Balloffet, A., et al.
- 317 Optimal Conjunctive Use Model for Indus Basin. (667-687) Chaudhry, M.T., et al.
- Proc. of A.S.C.E., 100-WW 2 74-5**
- 318 Development and Future of Dredging (69-83) Mohr, A.W.
- 319 Variation of Regime Coefficients in Pakistan Canals. (85-104) Mahmood, K.
- 320 Stability of Laminar Flow at Seabed. (105-122) Sleath, J.F.A.
- 321 Impact of Beach Nourishment on Distribution of Emerita talpoida, the Common Mole Crab. (123-132) Hayden, B., et al.
- 322 Speed of Ships in Restricted Navigation Channels. (133-150) Schofield, R.B.
- Proc. of A.S.C.E., 100-PO 1 74-7**
- 323 Aseismic Design Criteria for Electrical Facilities. (1-14) Fallgren, R.B., et al.
- 324 Cost of Thermal Effluent Standards for Power Plants. (15-31) Ortolano, L., et al.
- 325 Brittle Failure of Steel Stack. (33-42) Zar, M., et al.
- 326 Optimal Development of Multipurpose Hydro Projects. (43-52) Hoffman, P.R.
- 327 Seismic Analysis of Underground Structural Elements. (53-62) Shah, H.H., et al.
- 328 New Approach to Site Selection Studies. (63-69) Seiple, W.R.
- 329 Structural Design of Angeles Tunnel Surge Chamber. (71-83) White. R.L.
- 330 Nuclear Containment Mat Design Concepts. (85-96) Chu, K.Y., et al.
- 331 Test Method for Seismic Qualification of Equipment. (97-109) Estrada, M.
- 332 Prestress System for Nuclear Concrete Containment Domes. (111-123) Chu. K.V.
- Jour. of A.W.W.A., 66-1 74-1**
- 333 Public Response to Desalted Sea Water for Domestic Supply. (8-13) Chew, M.C., et al.
- 334 Rural Water Supply in Appalachia. (14-19) Duvel Jr, W.A., et al.
- 335 Highlights of an OSHA Inspection. (20-21) Marshall, D.H.
- 336 A Businesslike Approach to Fire-Protection Charges. (22-25)
- 337 Pesticide Analysis in Water. (27-31) Hurley, J.T.

新時代のジョイント!!

橋梁・高架道路用伸縮継手

# トランスフレックス®

伸縮量が大きい—最大330mm(特殊660mm)までのものがあります



2時間で硬化する  
超早強度無収縮ポリエステルコンクリート  
**スタ-コンクリートP**  
も製造しております。

技術に生きる



新田ベルト株式会社

本社 〒541 大阪市東区博労町4丁目30  
電話 大阪(06)251-5631(大代表)

東京支店 (03) 572-2301 福岡営業所 (092) 741-4546  
名古屋支店 (052) 586-2121 北陸出張所 (0762) 65-6235  
札幌営業所 (011) 241-0858 広島出張所 (0822) 81-7350

※資料請求は当社開発課まで  
お申し出下さい。

- 338 Properties of GB in Water. (31-37) Epstein, J.
- 339 Evaluation of Existing Field Test kits for Determining Free Chlorine Residuals in Aqueous Solutions. (38-43) Guter, K.J., et al.
- 340 The Determination of Tannin and Lignin. (44-46) Kloster, M.B.
- 341 On-Site Caustic Chlorine Generation for Water Disinfection. (46-49) Fiedler, R.P.
- 342 Effect of pH on Quality of Calcium Carbonate Film Deposited From Moderately Hard and Hard Water. (49-53) McClanahan, M.A., et al.
- 343 Aluminum in Fluoridated Drinking Water. Analytical and Physiological Problems. (53-55) Ruzicka, J.A., et al.
- 344 Pipe Network Analysis. (55-58) Chenoweth, H.E.
- 345 Advanced Engineering Technology for Upgrading Treatment Plants. (59-64) LaFontaine, E.O.  
**Jour. of A.W.W.A., 66-2 74-2**
- 346 Direct Filtration: An Economic Answer to a City's Water Needs. (65-71) Sweeney, G.E., et al.
- 347 Deep-Bed Filtration. (73-78) Jung, H., et al.
- 348 Operational and Experimental Results of Direct Filtration. (79-87) Hutchison, W., et al.
- 349 Hydraulic Control Systems of Constant and Declining Flow Rate in Filtration. (87-94) Arboleda, J.
- 350 An Investigation of the Influences of Some Physicochemical Variables on Porous-Media Filtration. (94-98) Boyd, R.H., et al.
- 351 Virus Removal by Diatomaceous-Earth Filtration—part 1. (98-102) Brown, T.S., et al.
- 352 Direct-Filtration Studies for Metropolitan Toronto. (103-109) Tredgett, R.G.
- 353 High-Rate Contact Flocculation-Filtration With Cationic Polyelectrolytes. (109-117) Adin, A. et al.
- 354 Potable-Water Supply by Means of Upflow Filtration (L'Eau Claire Process). (117-123) Haney, B.J., et al.
- 355 Series Filtration Using Local Filter Media. (124-127) Frankel, R.J.
- 356 Design and Operation of a 200-mgd Direct-Filtration Facility. (127-132) Spink, C.M., et al.
- 357 Gas-Turbine Standby-Power Generation for Water-Treatment Plants. (133-138) DeMarco, T.C.  
**Jour. of A.W.W.A., 66-3 74-3**
- 358 Problems of Water-Quality Standards in the Management of Ground-Water Basins. (143-146) Pomeroy, R.D.
- 359 Nitrates and Ground-Water Management in the Fresno Urban Area. (146-148) Schmidt, K.D.
- 360 Water Quality and Other Aspects of Ground-Water Recharge in Southern California. (149-151) Toups, J.M.
- 361 Chemical Pollution of Ground Waters. (152-159) Kaufman, W.J.
- 362 Renovating Municipal Wastewater by High-Rate Infiltration for Ground-Water Recharge. (159-162) Bower, H.
- 363 Water-Quality Aspects of Ground-Water Recharge in Israel. (163-166) Goldshmid, J.
- 364 Correlation Between Turbidity and Iron Content of the Filter Effluent of Well Origin. (166-168) Filip, A., et al.
- 365 ERTS-1 Applications in Hydrology and Water Resources. (168-172) Salomonson, V.V., et al.
- 366 Managing Water Resources: Basic Considerations and Problems. (173-175) Medbery, H.C.
- 367 The City of Fresno's Leaky Acres Ground-Water Recharge Project—Construction and Performance. (176-180) Bianchi, W.C., et al.
- 368 Salt-Water Intrusion and Its Control. (180-187) Todd, D.K.
- 369 Managing Water Resources From the Wrong Place at the Wrong Time. (187-192) McCullough, C.A.
- 370 Ground-Water Flow Patterns in Confined Aquifers and Pollution. (192-197) Kirkham, D., et al.
- 371 Operation and Maintenance of Wells. (199-204) Arceneaux, W.  
**Jour. of A.W.W.A., 66-4 74-4**  
(94th Annual Conference)
- 372 Potable Water—Quality Goals. (221-230) Bean, E.L.
- 373 The Direct Reuse of Reclaimed Wastewater: Proc, Cons, and Alternatives. (231-237) Phillips II, W.J.
- 374 Factors in Regional Assessment of Wastewater Reuse. (238-239) Horsefield, D.R.
- 375 Industrial Wastewater Recovery and Reuse. (240-243) McClure, A.F.
- 376 World's Greatest Source of Fresh Water. (245-247) Waller, R.M.
- 377 Feasibility of Water Reuse at Highway Rest Stations. (247-249) Parker, C.E.
- 378 Experimental Application of Aliquat-4 and Copper for Control of Pondweeds. (250-252) Archer, B.J., et al.
- 379 Polyelectrolytes as Primary Coagulants for Potable-Water Systems. (252-257) Robinson Jr, C.N.
- 380 High-Rate Filtration. (258-261) Rice, A.H.
- 381 Selecting Mixers for Treatment Operations. (262-264) Winter, R.L.

土木学会下水汚泥の処分方法に関する編集小委員会編

## 下水汚泥の処理処分および利用に関する研究

- |                  |                 |                  |                 |
|------------------|-----------------|------------------|-----------------|
| 43 年度報告書 B 5・232 | 1 200 円 (〒 140) | 46 年度報告書 B 5・322 | 2 000 円 (〒 170) |
| 45 年度報告書 B 5・200 | 1 500 円 (〒 140) | 47 年度報告書 B 5・278 | 2 000 円 (〒 170) |

# 荒波から守る

全国の港湾づくり、護岸工事で活躍中

セミハイテンタイロッドは、特殊鋼としてすぐれた実績をもつ神鋼の構造用高張力鋼を素材として開発した理想的テンションバーです。適当な引張り強さとねばさを兼ね備えており曲げや衝撃荷重にビクともしません。荒波の押し寄せる岸壁や護岸に、擁壁用に、建築に全国で大活躍。高品質で経済的なタイロッドとして、数多くの施工実績をもっています。

- 強度と靱性がすぐれています。
- アフセット加工ですから、ロッド全体に継目がなく、強度の局所的なバラツキがありません。
- 連続熱処理炉でロッド全体を標準処理していますので、品質が安定しています。
- 600トンの引張試験機で完成品の強度を実証していますので安心いただけます。
- 従来の普通鋼の場合に比べて細径でも使用トン数が少なく経済的。工事費も節減できます。

(引張り強さ)プラス(ねばり強さ)

# セミハイテンタイロッド

 **神戸製鋼**  
鉄鋼事業部

東京本社 〒100 東京都千代田区丸の内1丁目(鉄鋼ビル)

☎ (03)218-7111

大阪支社 〒541 大阪市東区北浜3丁目5(大阪神鋼ビル)

☎ (06)203-2221