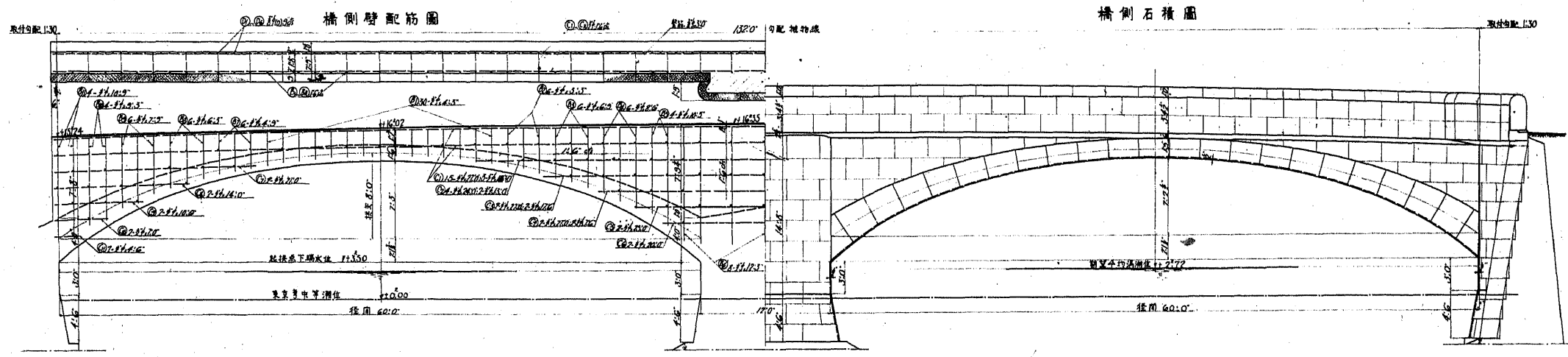
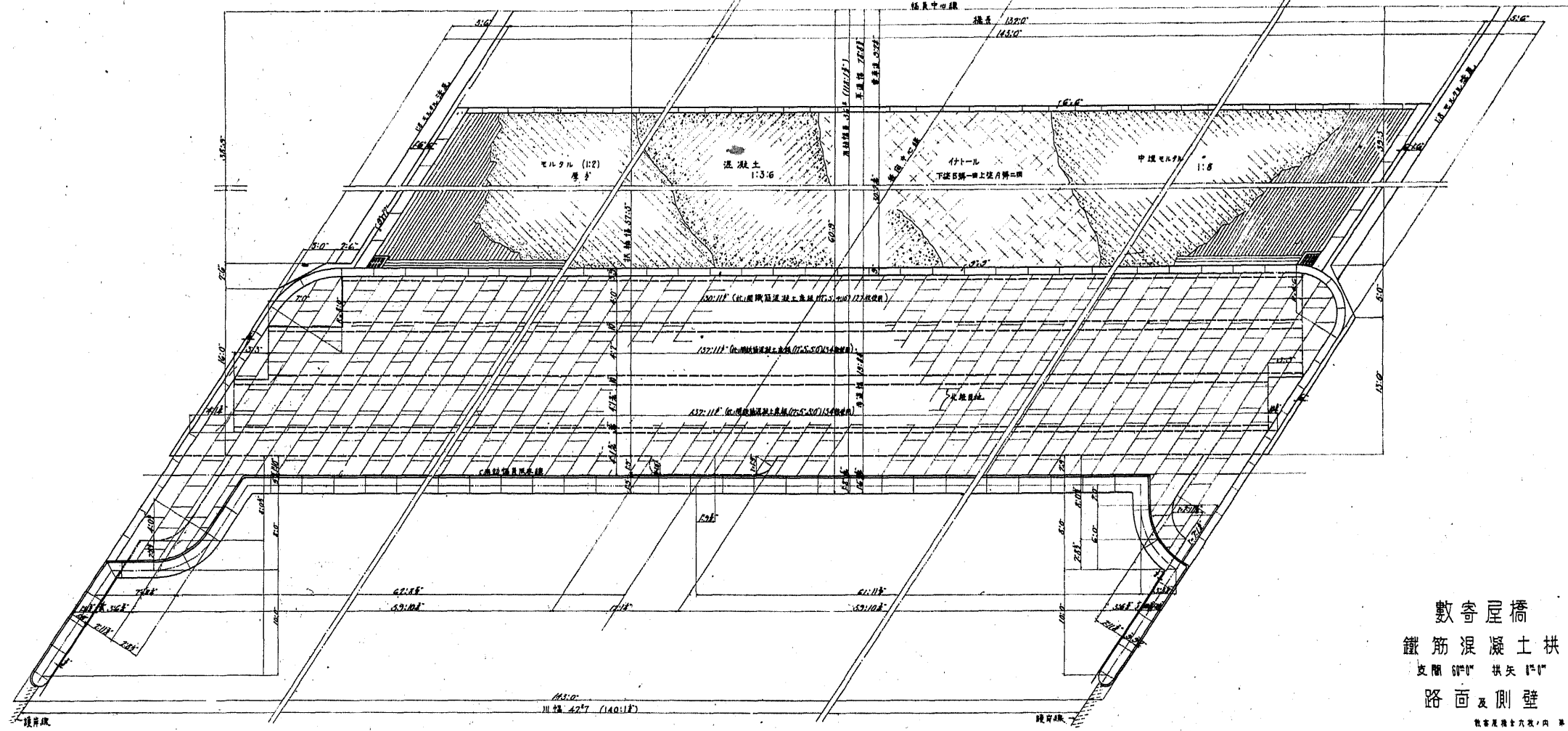


數奇屋橋
 橋長 132.0m 幅員 11.73m
 鐵筋混凝土拱
 支間 60.0m 拱矢 11.0m
 一般圖

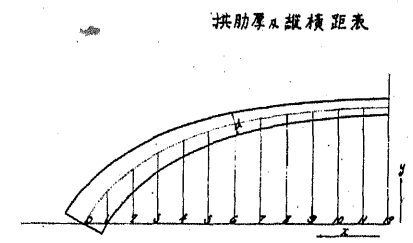
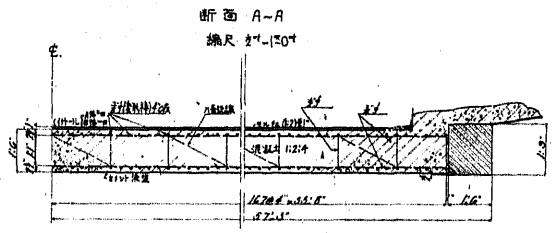
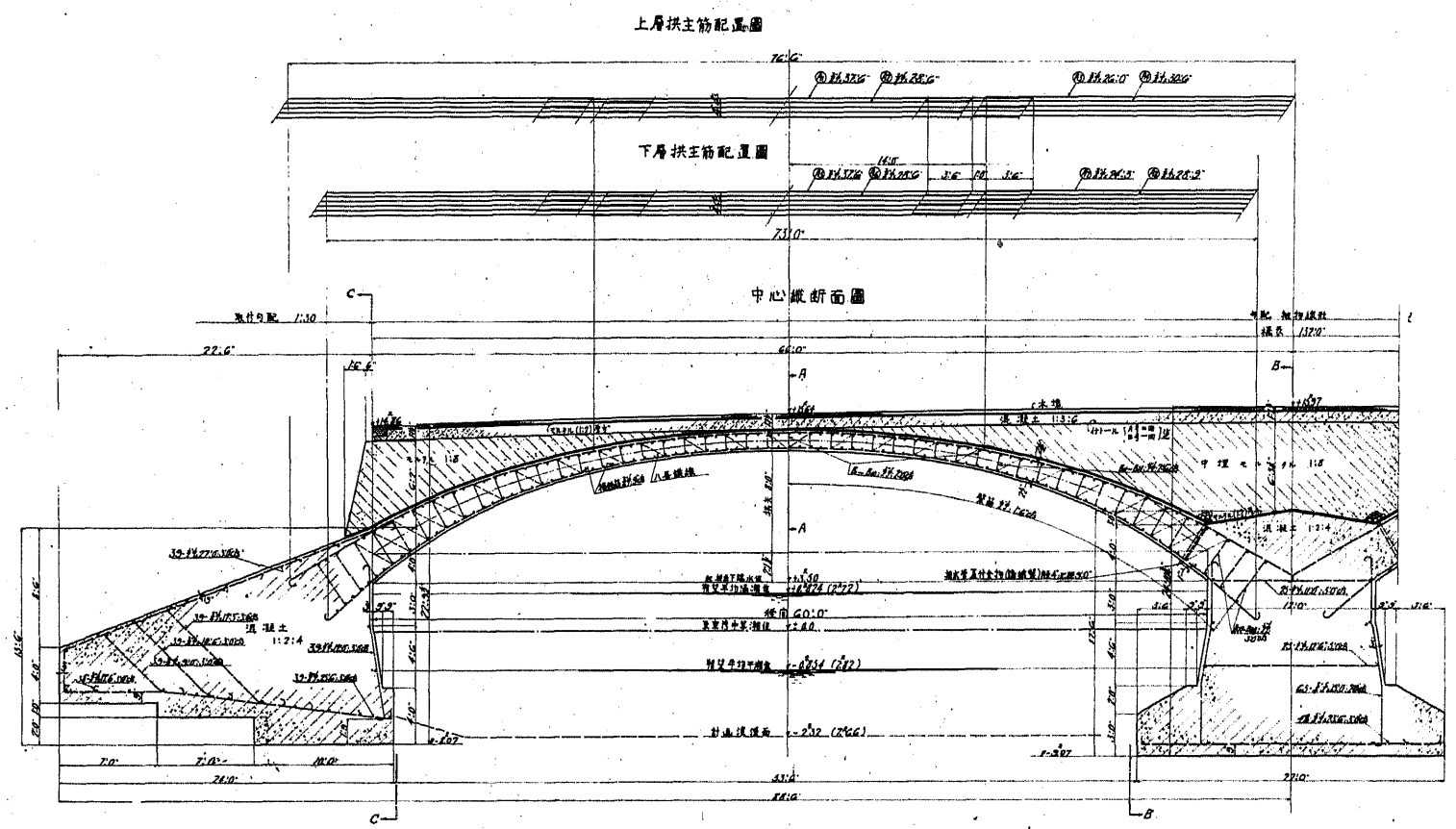
數奇屋橋全六枚、第一



平面圖



數寄屋橋
 鐵筋混凝土拱
 支間 6'0" 拱矢 1'11"
 路面及側壁
 數寄屋橋全六張ノ四 第二



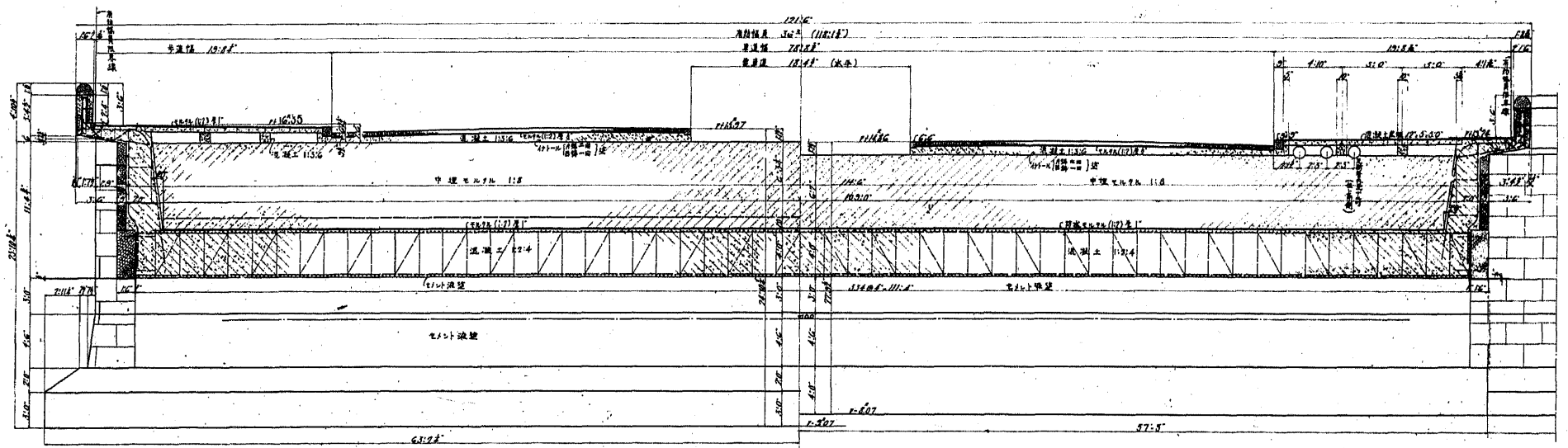
點	0	1	2	3	4	5	6	7	8	9	10	11	12
拱頂高 (m)	5.300	7.816	7.816	7.816	7.816	7.816	7.816	7.816	7.816	7.816	7.816	7.816	7.816
拱底高 (m)	1.000	2.916	2.916	2.916	2.916	2.916	2.916	2.916	2.916	2.916	2.916	2.916	2.916
拱厚 (m)	4.300	4.900	4.900	4.900	4.900	4.900	4.900	4.900	4.900	4.900	4.900	4.900	4.900

鐵筋间距及排布表

層數	排布	間距 (cm)	備註
1	上層	10	1.0
2	中層	10	0.5
3	下層	10	0.5
4	底層	10	0.5

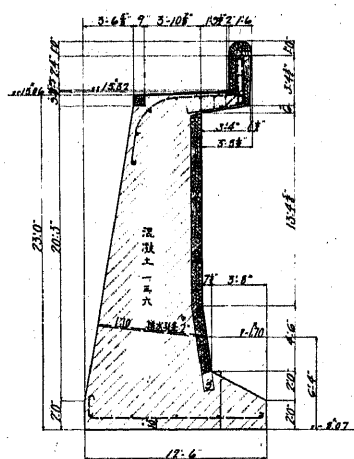
橋脚正面圖 (断面 B-B)

橋臺正面圖 (断面 C-C)

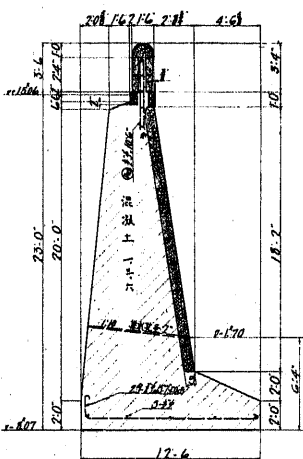


數奇屋橋
 鐵筋混凝土拱
 支間 60m 拱矢 12m
 鐵筋配置

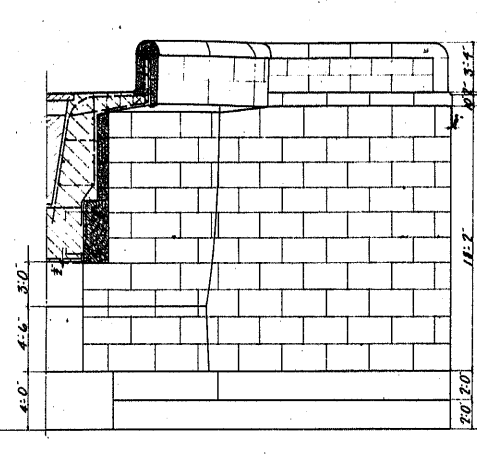
步道取附部分断面圖 (断面 A-A)



翼壁断面圖 (断面 B-B)

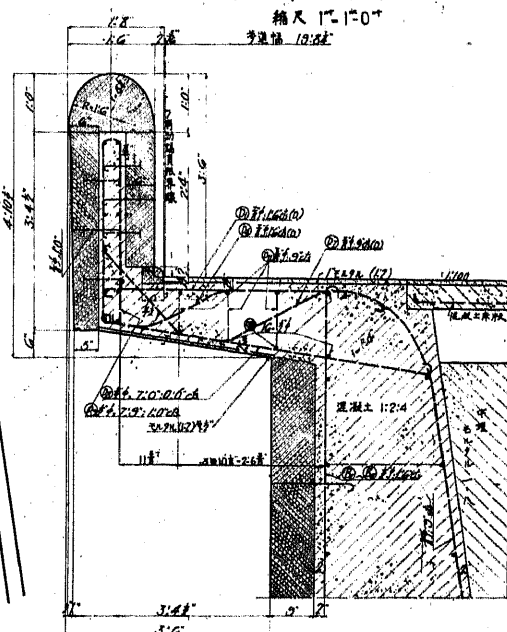


翼壁正面圖

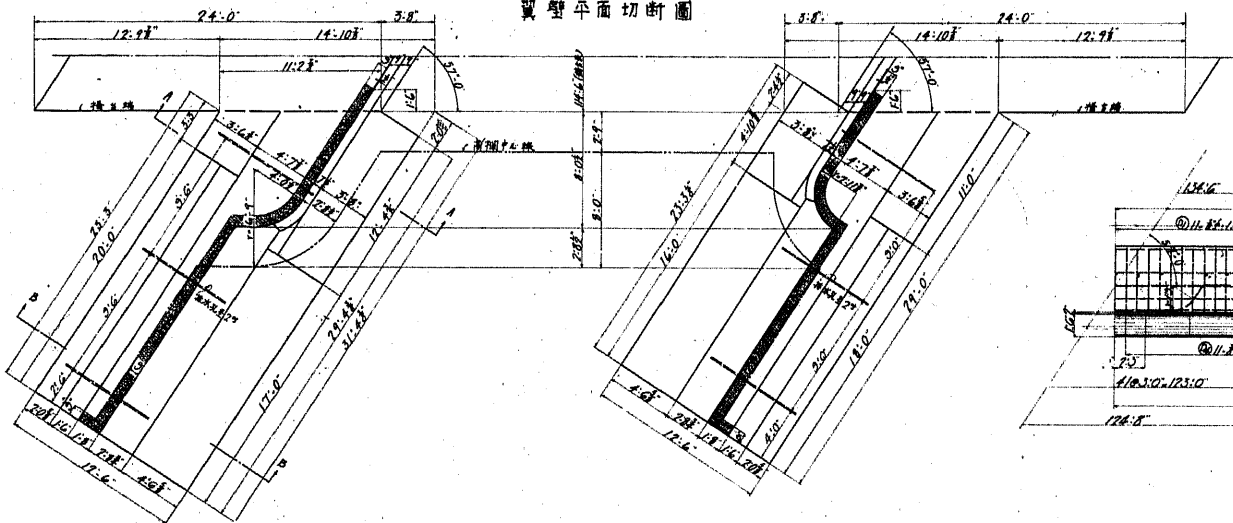


高欄尖桁詳細圖

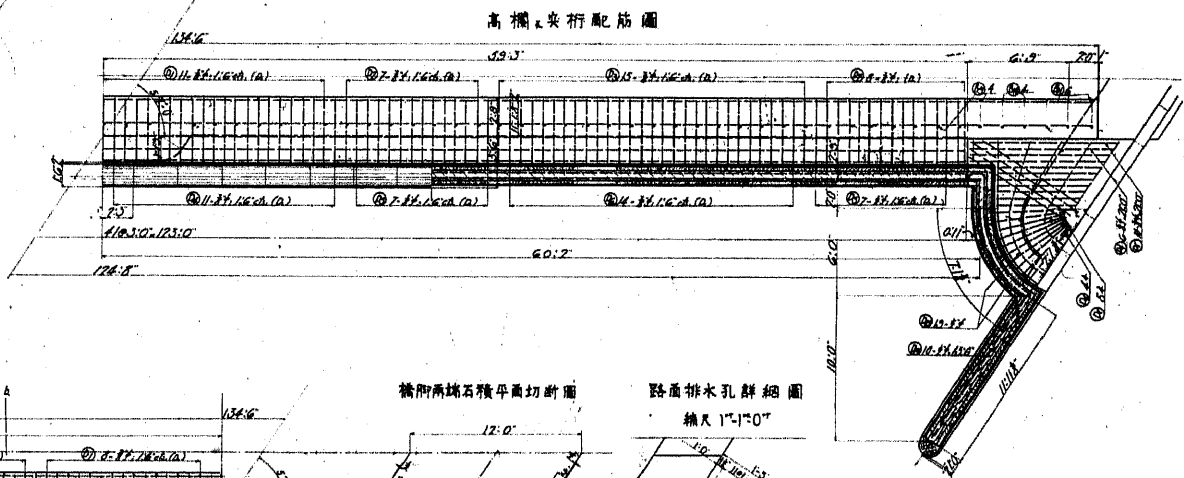
縮尺 1/100



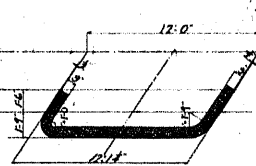
翼壁平面切斷圖



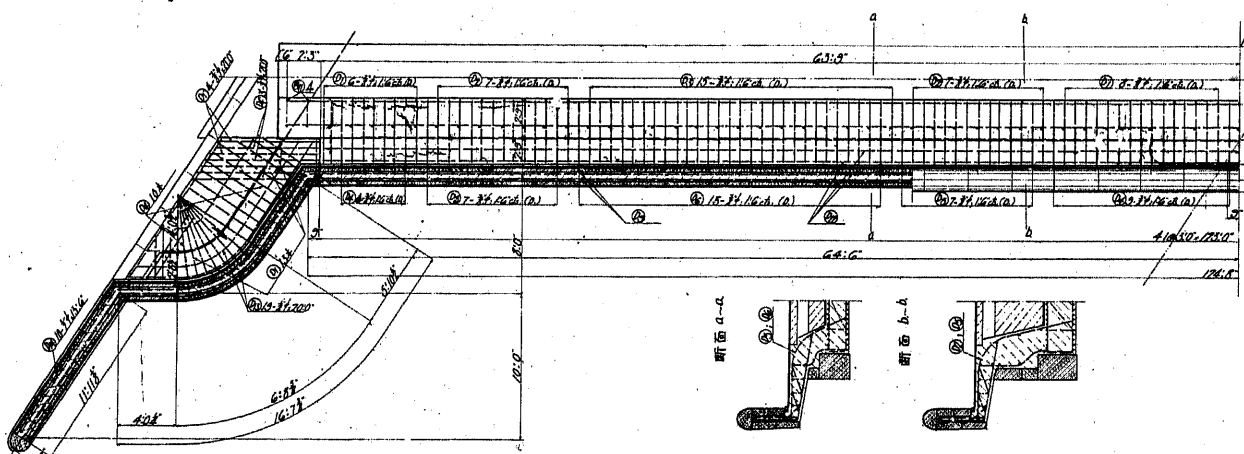
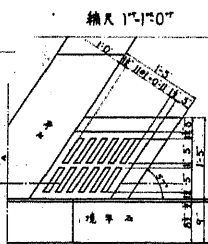
高欄尖桁配筋圖



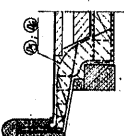
橋兩端石積平面切斷圖



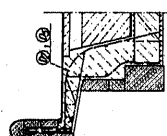
路面排水孔詳細圖



断面 a-a

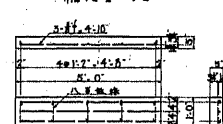


断面 b-b

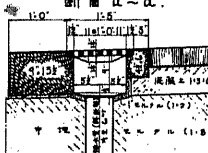


步道用鐵筋混凝土版

縮尺 1/100

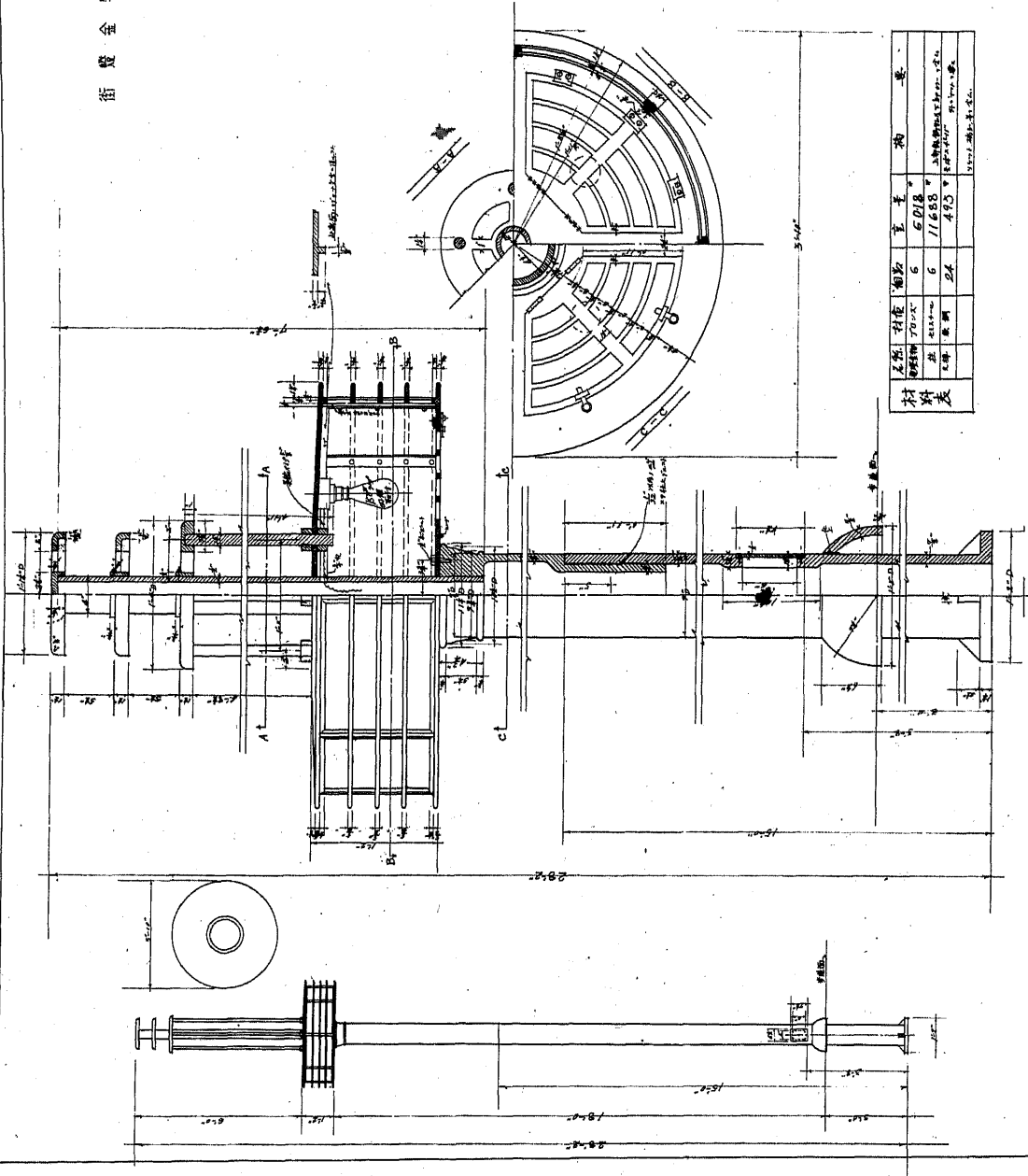


断面 a-a



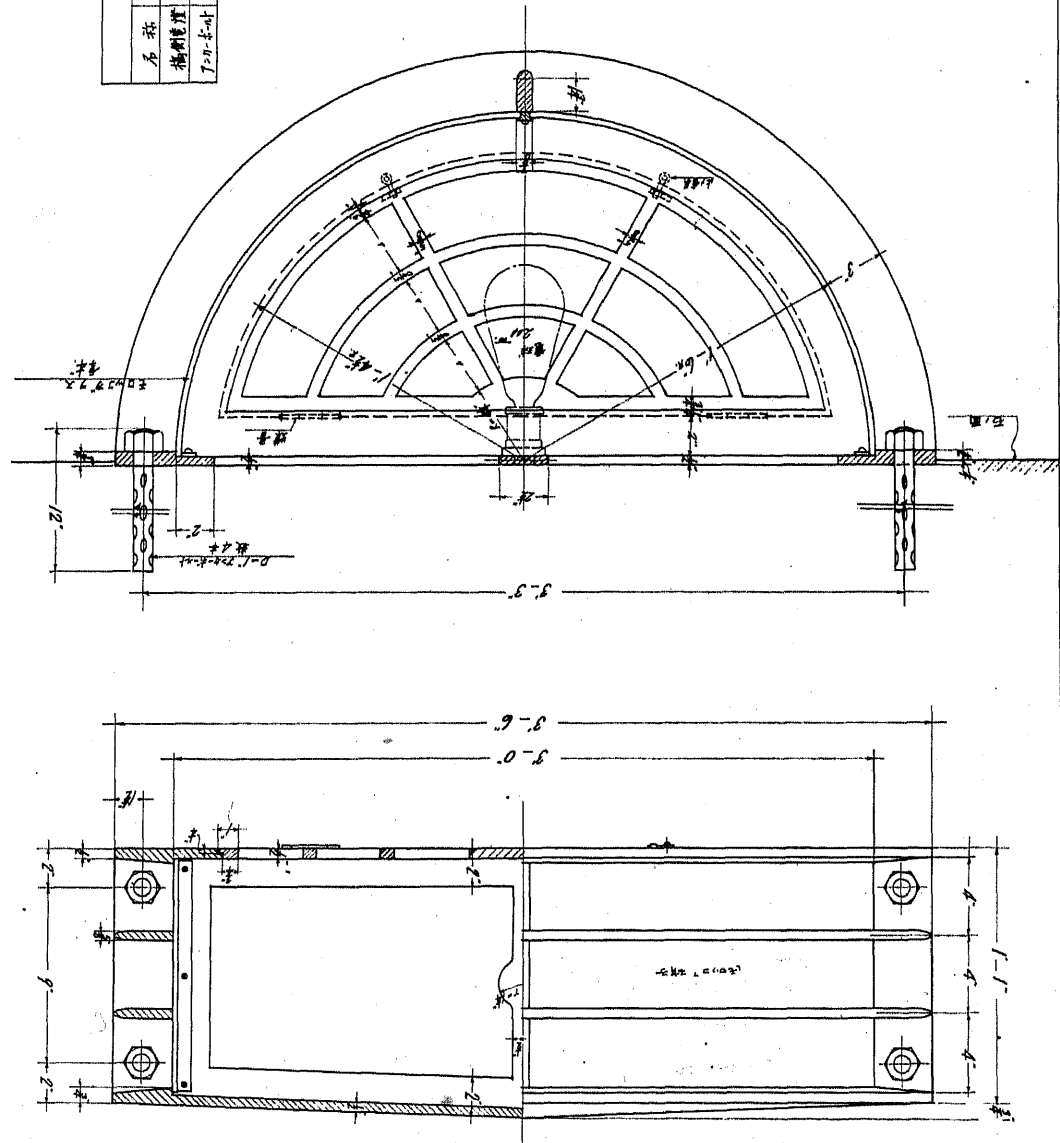
數寄屋橋
鐵筋混凝土拱
支間部 拱矢部
高欄及翼壁

街燈全物



材料名	材種	規格	數量	備註
鋼管	φ100	6	11.68	燈柱及燈臂
鋼管	φ75	24	4.75	燈架及燈罩

橋側燈詳細

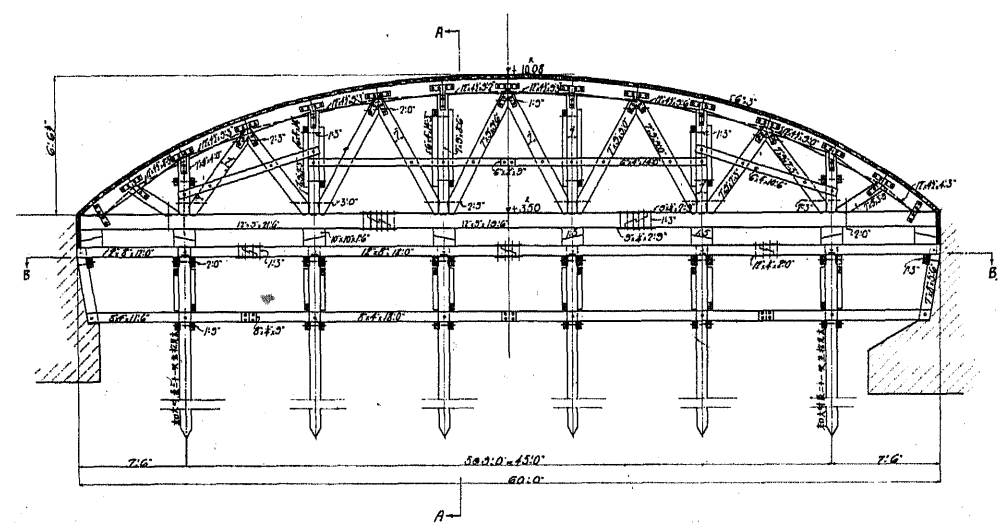


名稱	材料	數量	備註
橋側燈	鋼管	16	φ75
橋側燈	鋼管	56	φ100

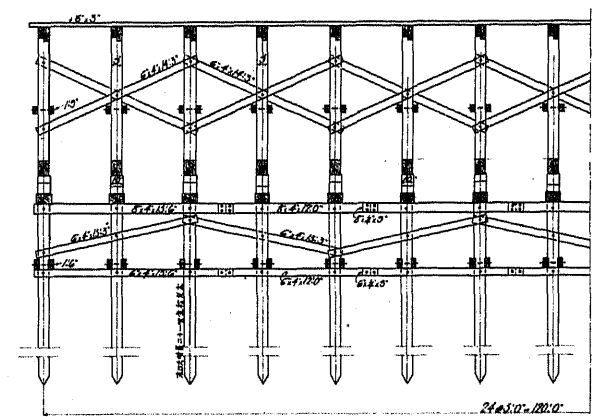
數寄屋橋
鐵筋混凝土拱
街燈及橋側燈

建築師事務所

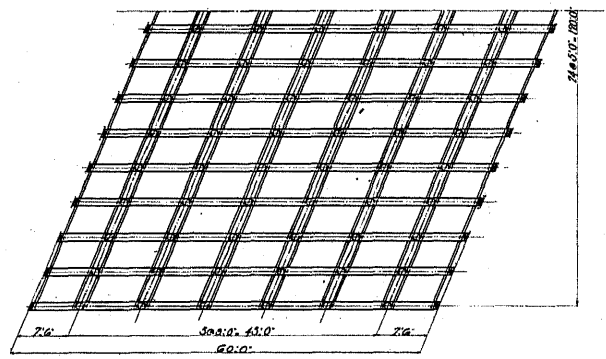
拱架縱断面圖



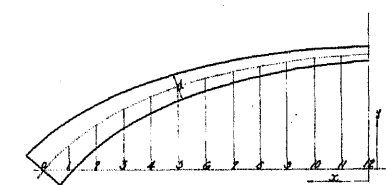
拱架橫断面圖 断面 A-A



切斷平面圖 断面 B-B
縮尺 1:100



拱架形狀縱距表



點	0	1	2	3	4	5	6	7	8	9	10	11	12
拱脚距	3.300	28.82	2.392	2.760	28.33	28.33	1.723	16.30	16.67	1.570	1.500	13.01	15.00
架頂	4.000	1.583	2.273	4.030	4.934	5.270	6.123	6.207	2.133	2.634	7.873	7.853	4.047
拱脚	3.300	2.850	2.100	2.230	20.00	17.30	13.00	12.50	10.00	7.50	5.00	2.50	0.00

注意 木-1.0 至 6 分 1.2.

數寄屋橋
鐵筋混凝土拱
支間 60'0" 拱矢 12'0"
拱架