

材料表

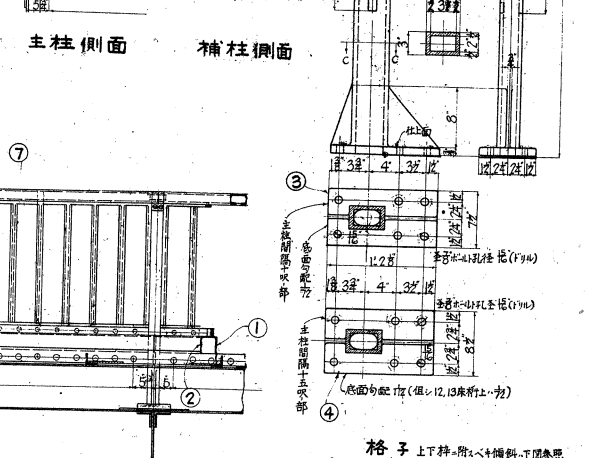
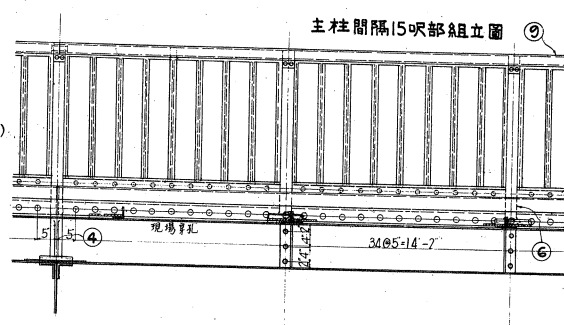
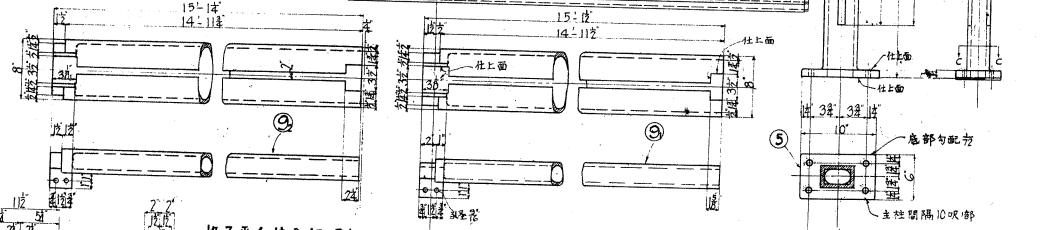
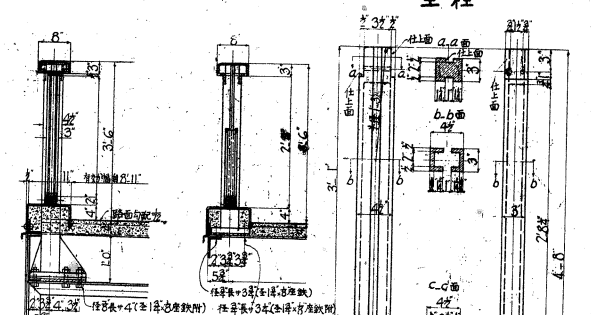
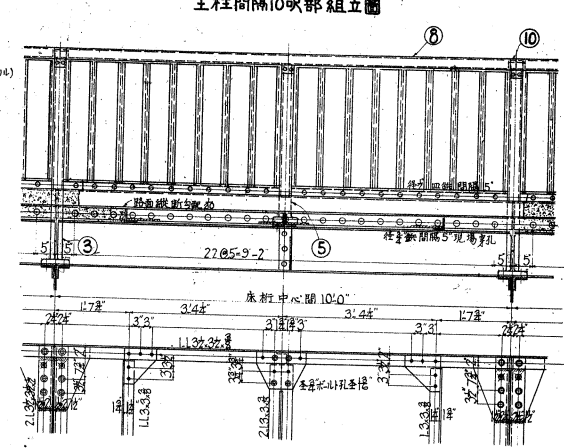
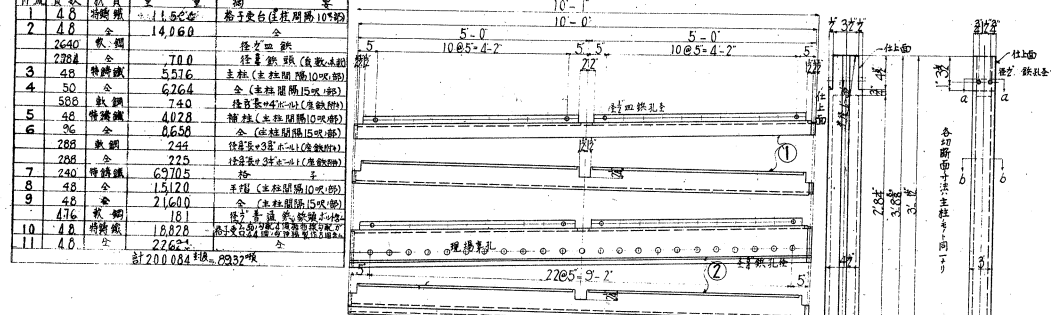
序號	數量	材料	重量	備註
1	4.8	鋼板	11.52	格子受台(僅用10呎)
2	4.8	鋼板	14.96	格子受台(僅用10呎)
3	240	鋼管	7.0	徑4吋
4	48	鋼管	5.16	徑3吋
5	50	鋼管	6.26	徑3吋
6	588	鋼管	7.4	徑2吋
7	48	鋼管	4.02	徑2吋
8	26	鋼管	0.65	徑1.5吋
9	288	鋼管	2.4	徑1.5吋
10	288	鋼管	2.25	徑1.5吋
11	240	鋼管	6.97	徑1.5吋
12	48	鋼管	1.51	徑1.5吋
13	48	鋼管	2.16	徑1.5吋
14	476	鋼管	1.8	徑1.5吋
15	4.8	鋼管	18.82	徑1.5吋
16	4.8	鋼管	22.62	徑1.5吋
合計				200.084

格子受台10呎部

補柱

主柱間隔10呎部組立圖

主柱

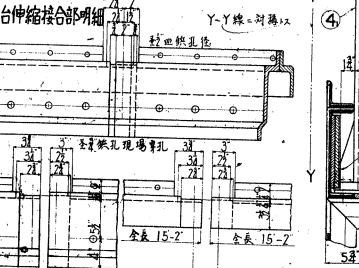
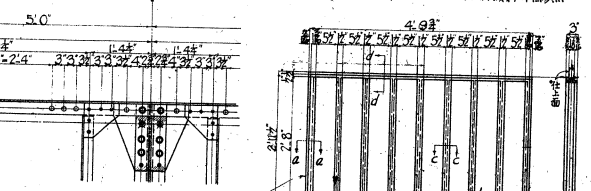
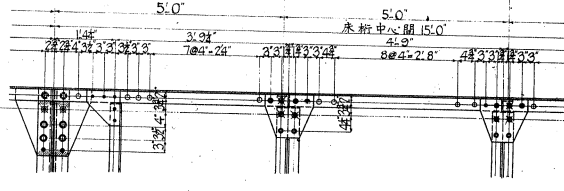
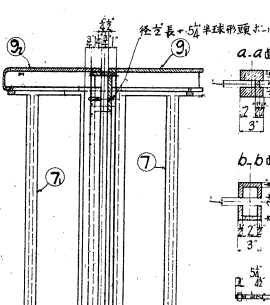
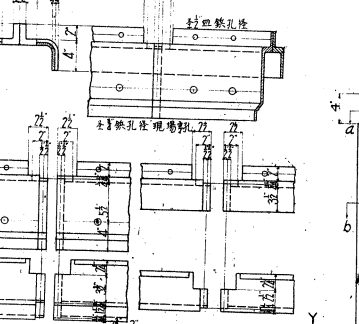


格子受台接合部明細

床桁上主柱手摺及格子

主柱間隔15呎部組立圖

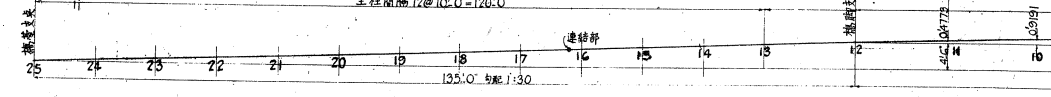
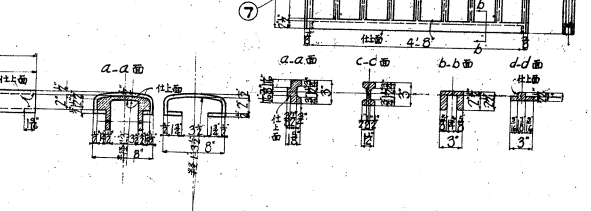
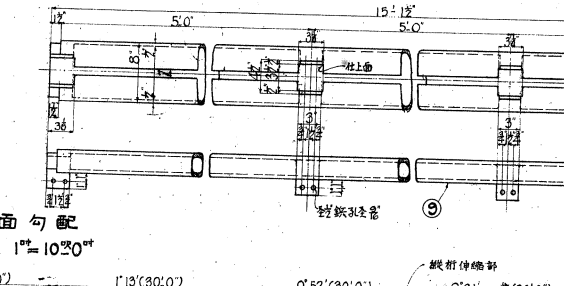
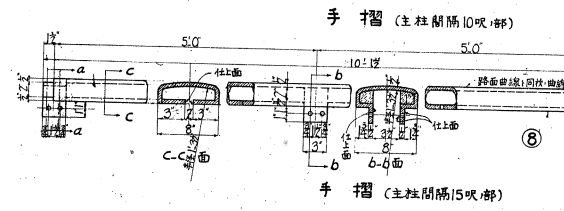
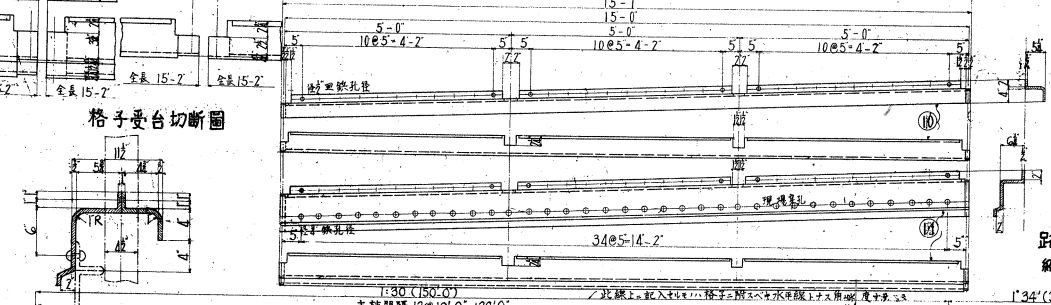
格子上下排-附1-4-特圖部-T圖参照



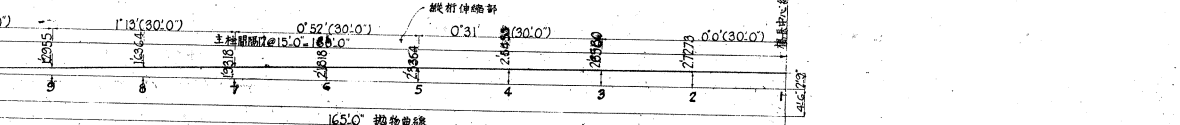
格子受台15呎部

手摺(主柱間隔10呎部)

手摺(主柱間隔15呎部)



路面勾配



永代橋  
高欄明細圖