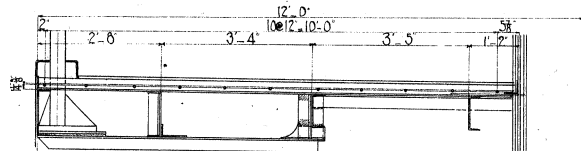
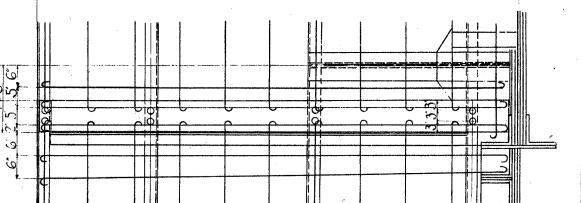


吊徑間

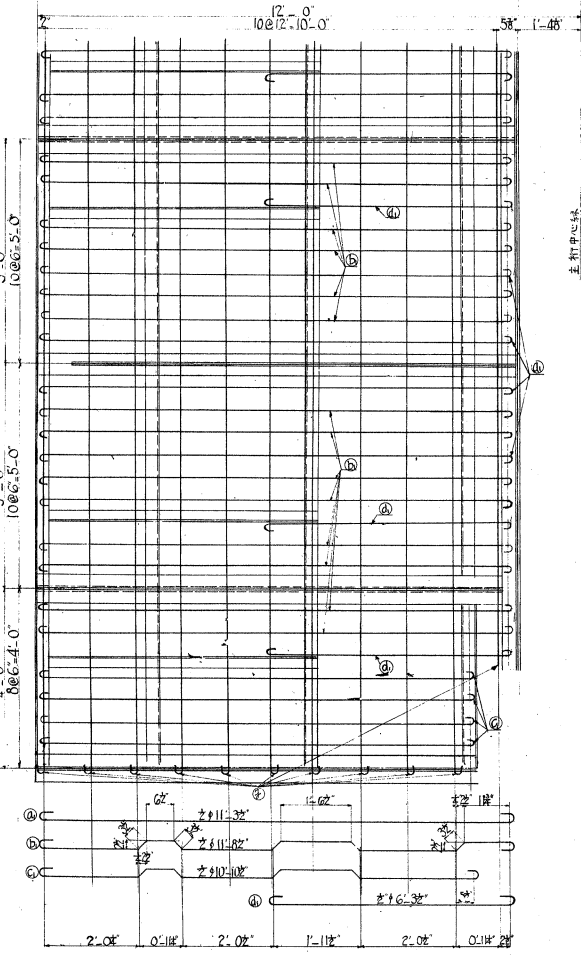
斷面圖



伸縮部(桁16)平面圖

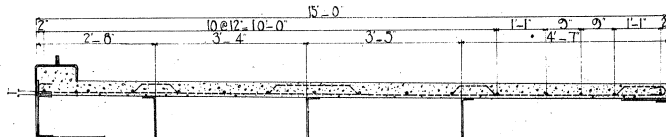


平面圖

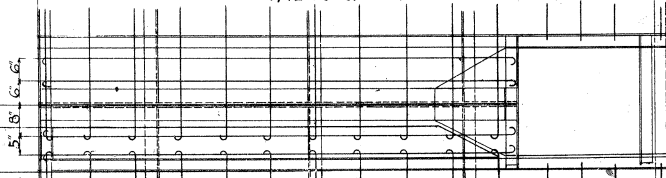


拱徑間

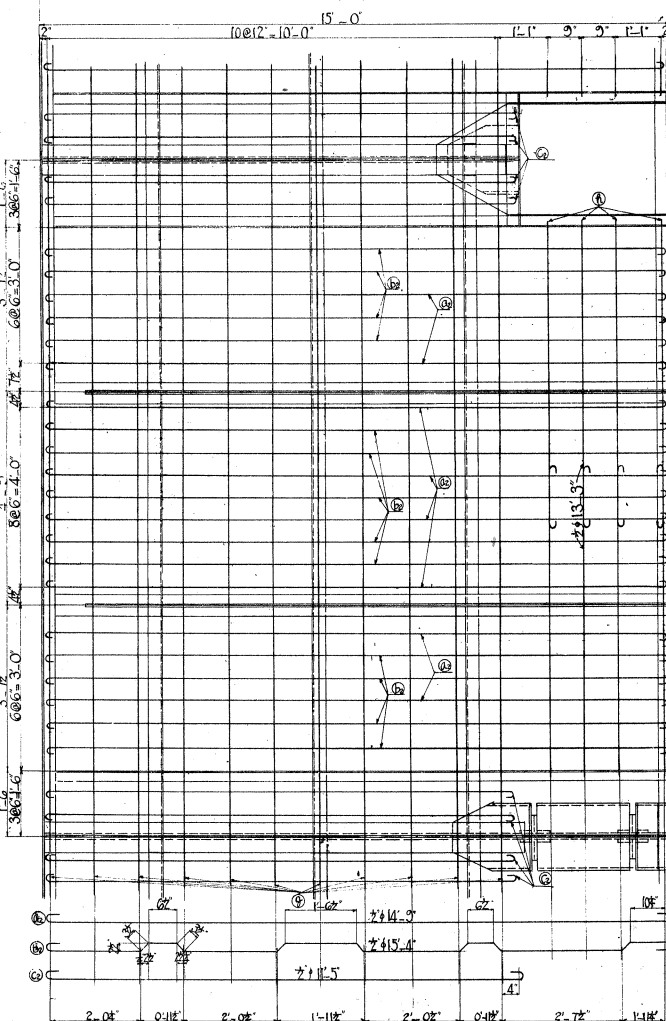
斷面圖



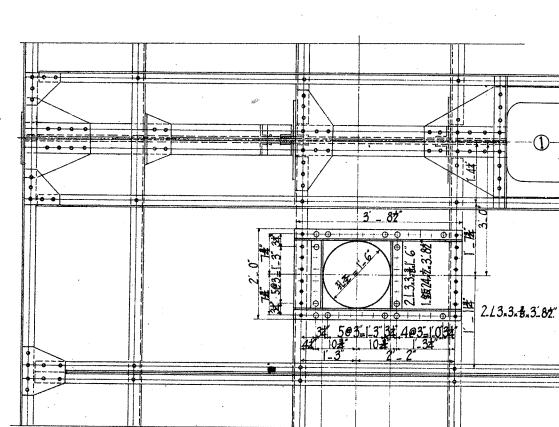
伸縮部(桁5)平面圖



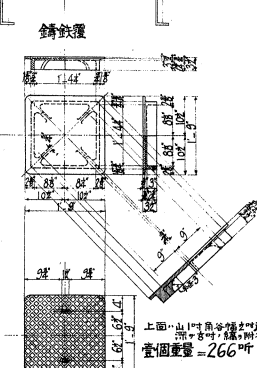
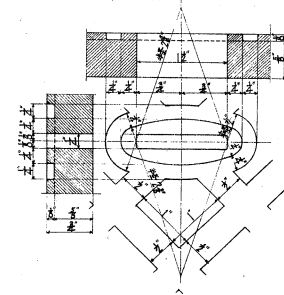
平面圖



排氣傘孔及鑄鐵製覆
(桁1-限上)



鉤孔詳細圖
(實大)



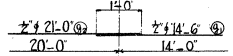
上面一山形用角鋼製成
鋼骨用鋼製成
實重=266斤

材料表

種類	員數	断面	長	重量	摘要
a	272	2x1	11' 3"	2652	橫鉄筋
b	704	1x1	8"	5506	
c	16	10x10	10"	116	
d	100	6x3	3"	421	
ae	320	14x9	9"	3153	
be	520	15x4	4"	5326	
ce	168	11x5	5"	1281	
g	44	14x6	6"	420	橫鉄筋
h	572	21x0	0"	8024	
ja	44	19x8	8"	578	
ka	44	9x6	6"	279	
la	160	13x3	3"	1416	
合計	2384			28578	

永代橋
歩道版鉄筋
配置詳細圖

縱鉄筋接合圖



縱鉄筋 ③ 間隔 1'10"±0"

