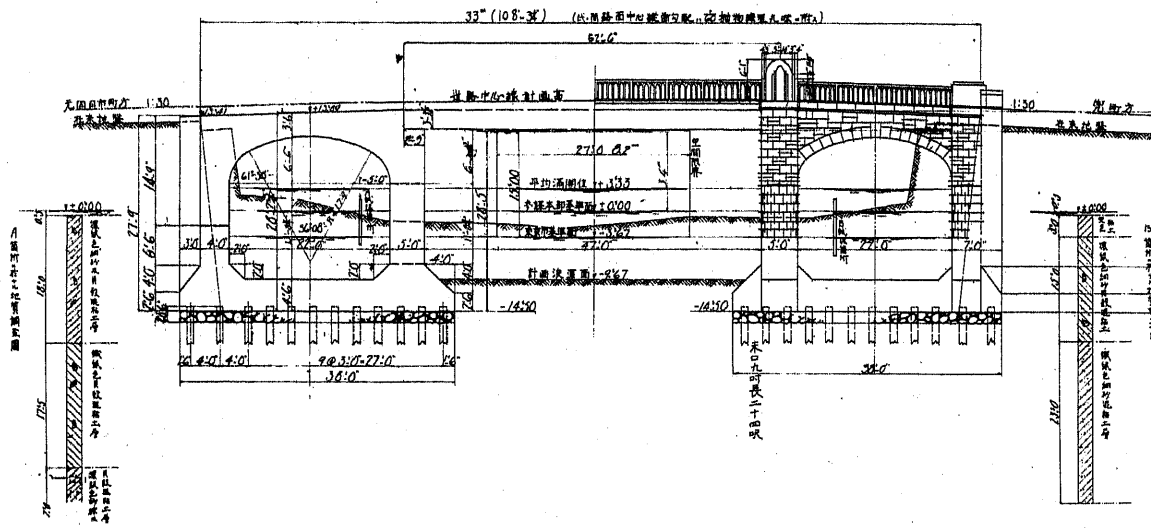


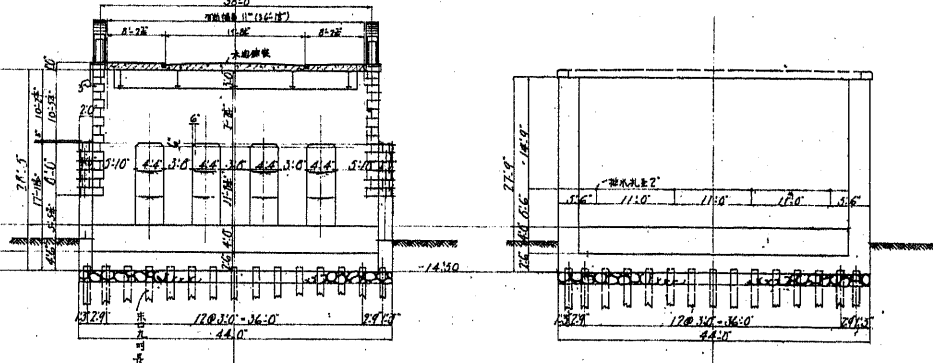
縱断面

側面

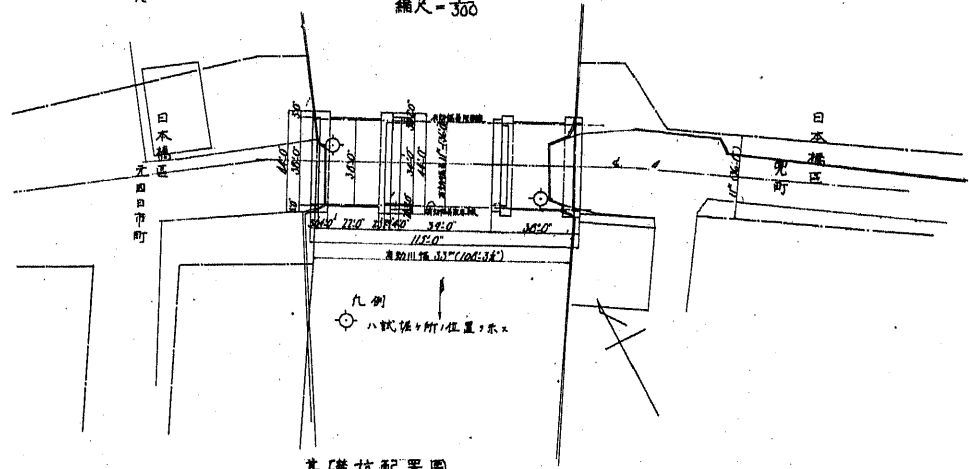


正面圖

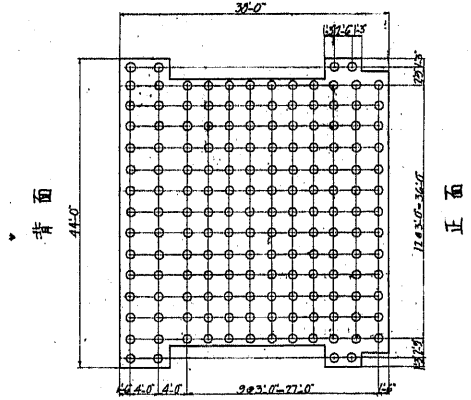
背面圖



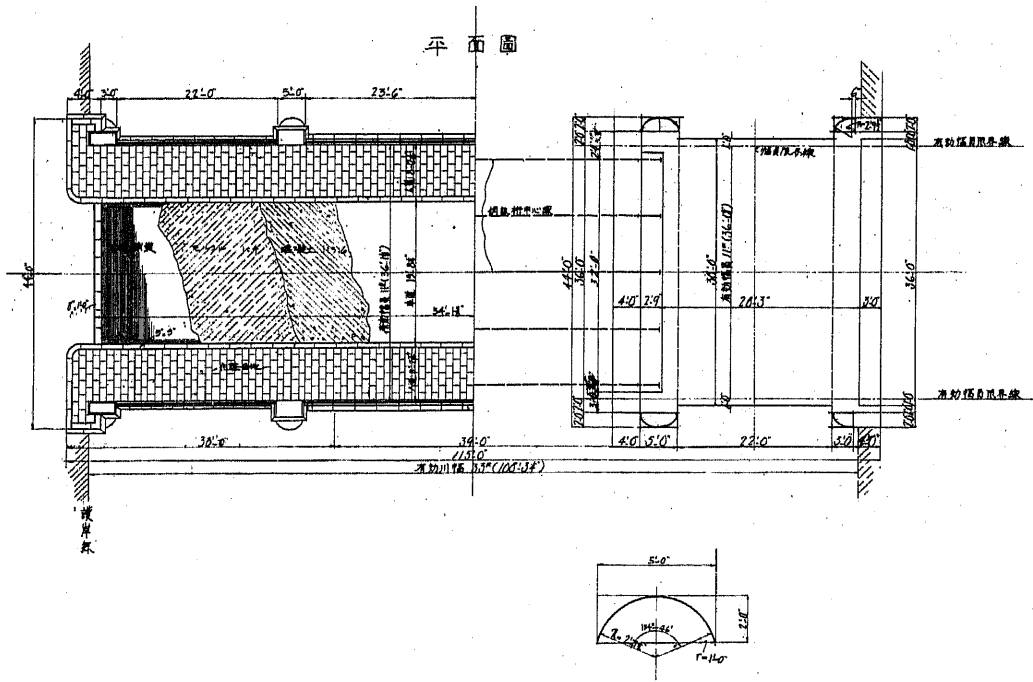
兜橋附近實測平面圖
縮尺=300



基礎杭配置圖



平面圖



兜橋

橋長 108' 3/4" 幅員 36' 3/4" (11m)

中央徑間 鋼 鈹 桁

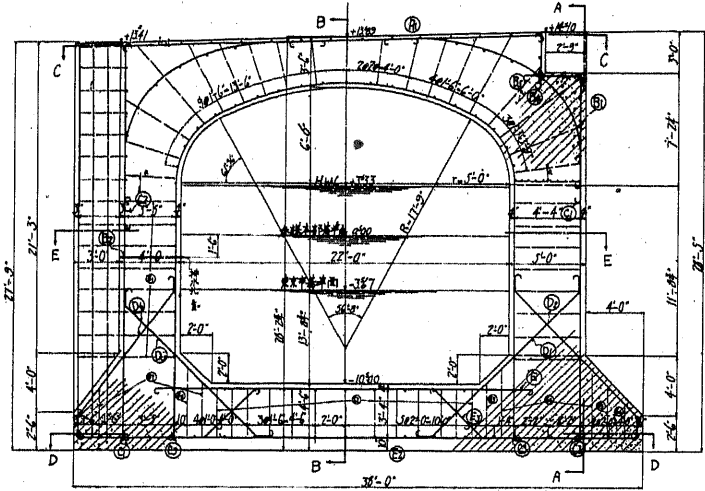
支間 50' - 0"

側徑間 鐵筋混凝土樑

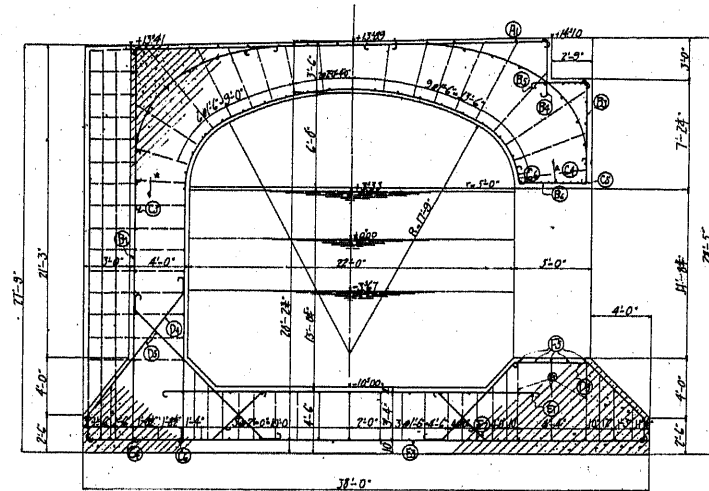
徑間 22' - 0"

一般圖

橋臺縱斷面圖

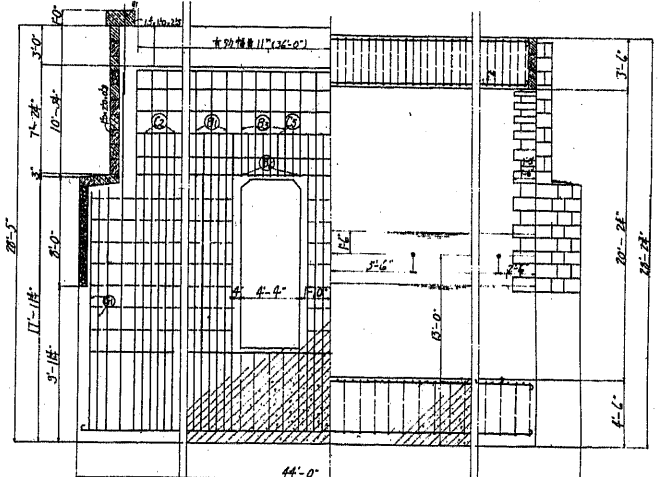


橋臺縱斷面圖



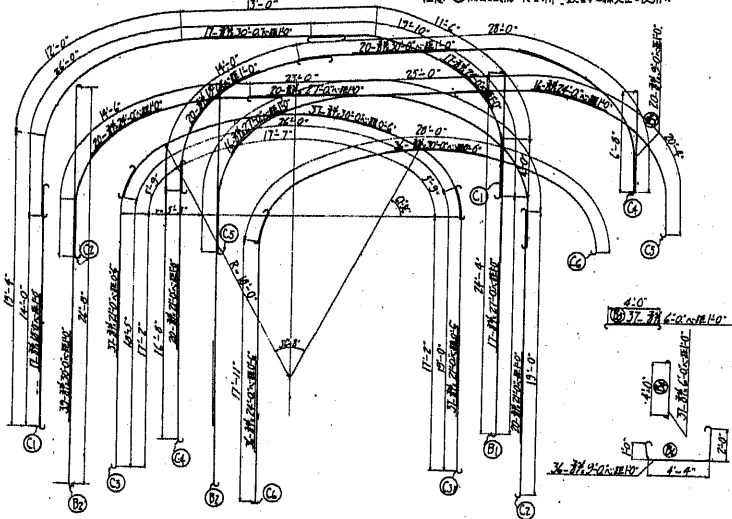
斷面 A-A

斷面 B-B

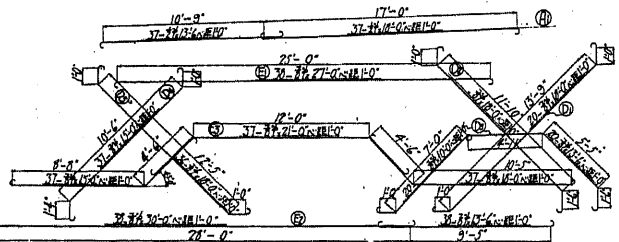


縱向拱肋鋼筋詳圖

注意：拱肋鋼筋與各桁架之鋼筋交叉處，應注意其位置。

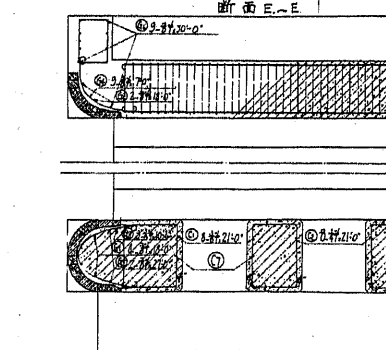
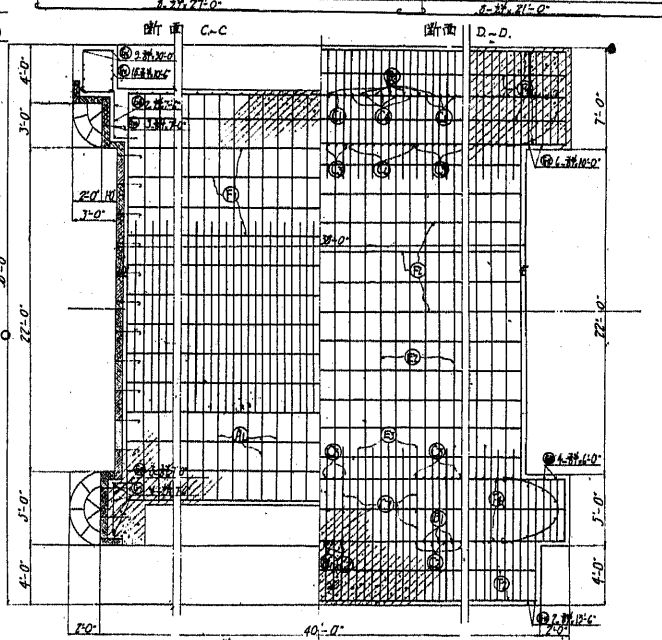


桁架	桁架長	桁架寬	桁架高
1	2'-0"	1'-0"	1'-0"
2	1'-10"	0'-9"	0'-9"
3	1'-6"	0'-6"	0'-6"
4	0'-6"	0'-2"	0'-2"

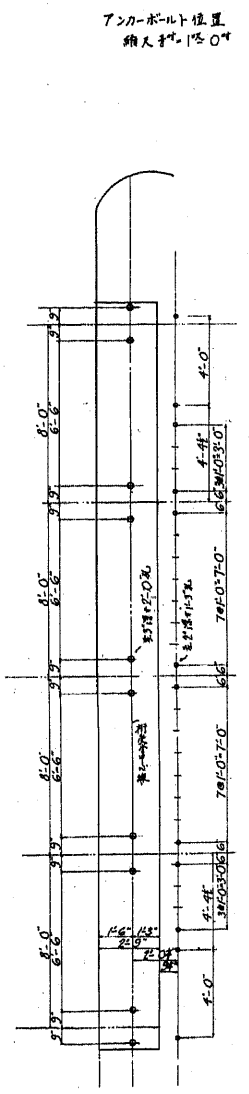
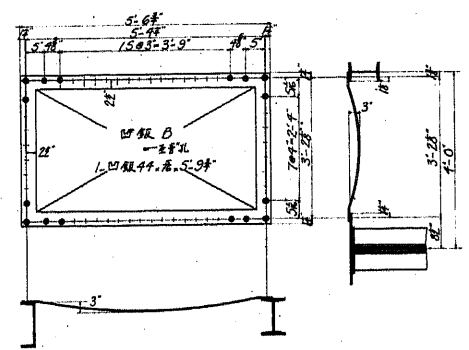
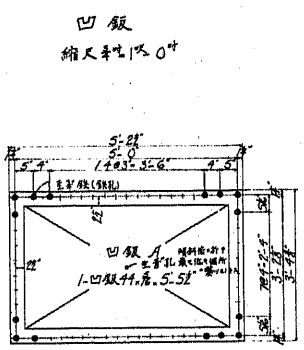
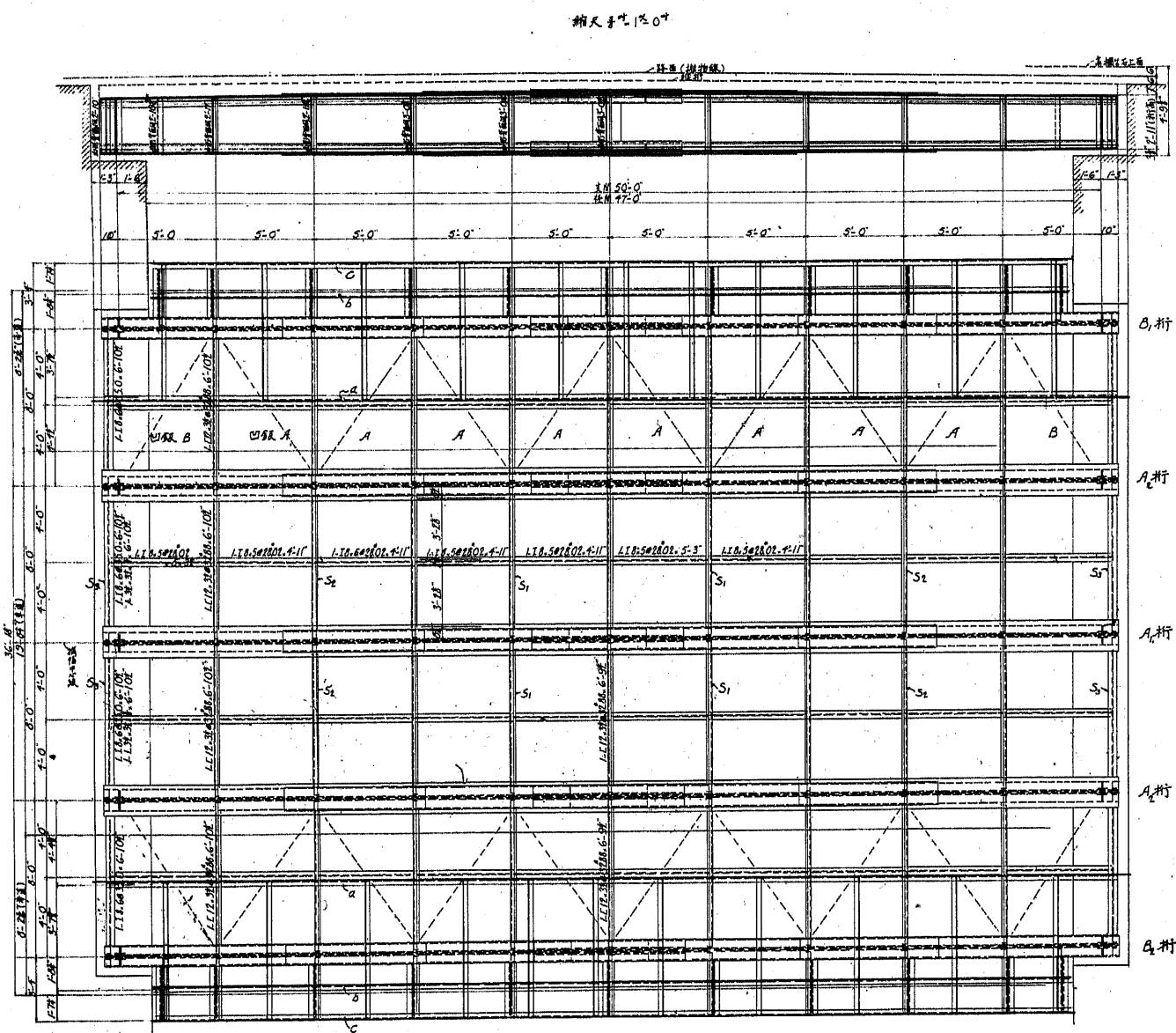


材料表

桁架	桁架長	桁架寬	桁架高	桁架重	桁架重
A1	76	11	0	11.0	11.0
B1	76	11	0	11.0	11.0
C1	76	11	0	11.0	11.0
D1	76	11	0	11.0	11.0
E1	76	11	0	11.0	11.0
F1	76	11	0	11.0	11.0
G1	76	11	0	11.0	11.0
H1	76	11	0	11.0	11.0
I1	76	11	0	11.0	11.0
J1	76	11	0	11.0	11.0
K1	76	11	0	11.0	11.0
L1	76	11	0	11.0	11.0
M1	76	11	0	11.0	11.0
N1	76	11	0	11.0	11.0
O1	76	11	0	11.0	11.0
P1	76	11	0	11.0	11.0
Q1	76	11	0	11.0	11.0
R1	76	11	0	11.0	11.0
S1	76	11	0	11.0	11.0
T1	76	11	0	11.0	11.0
U1	76	11	0	11.0	11.0
V1	76	11	0	11.0	11.0
W1	76	11	0	11.0	11.0
X1	76	11	0	11.0	11.0
Y1	76	11	0	11.0	11.0
Z1	76	11	0	11.0	11.0

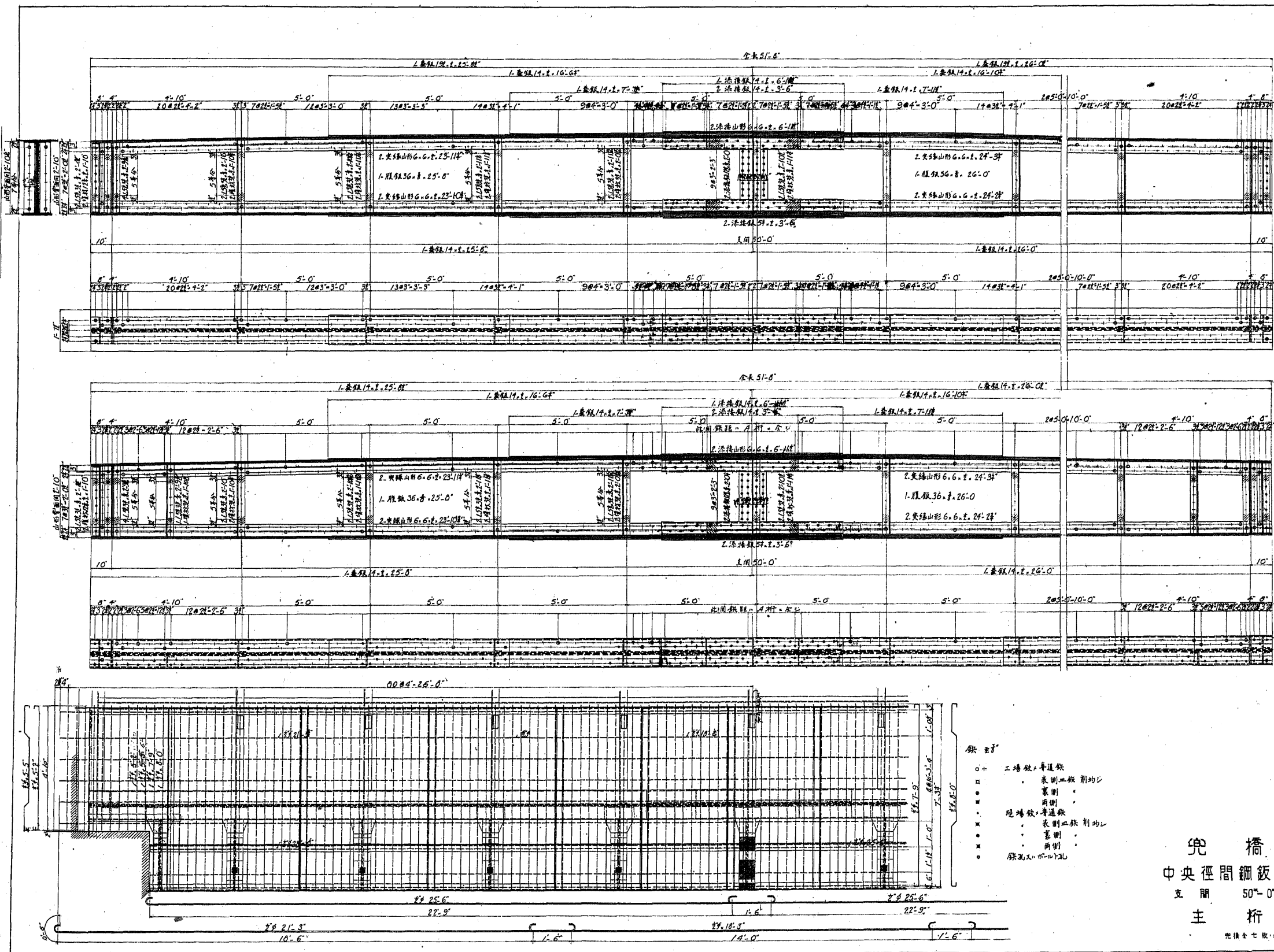


兒橋
側徑間鋼筋混凝土樑
徑間 22'-0"

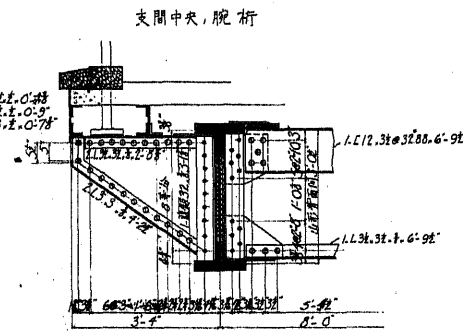
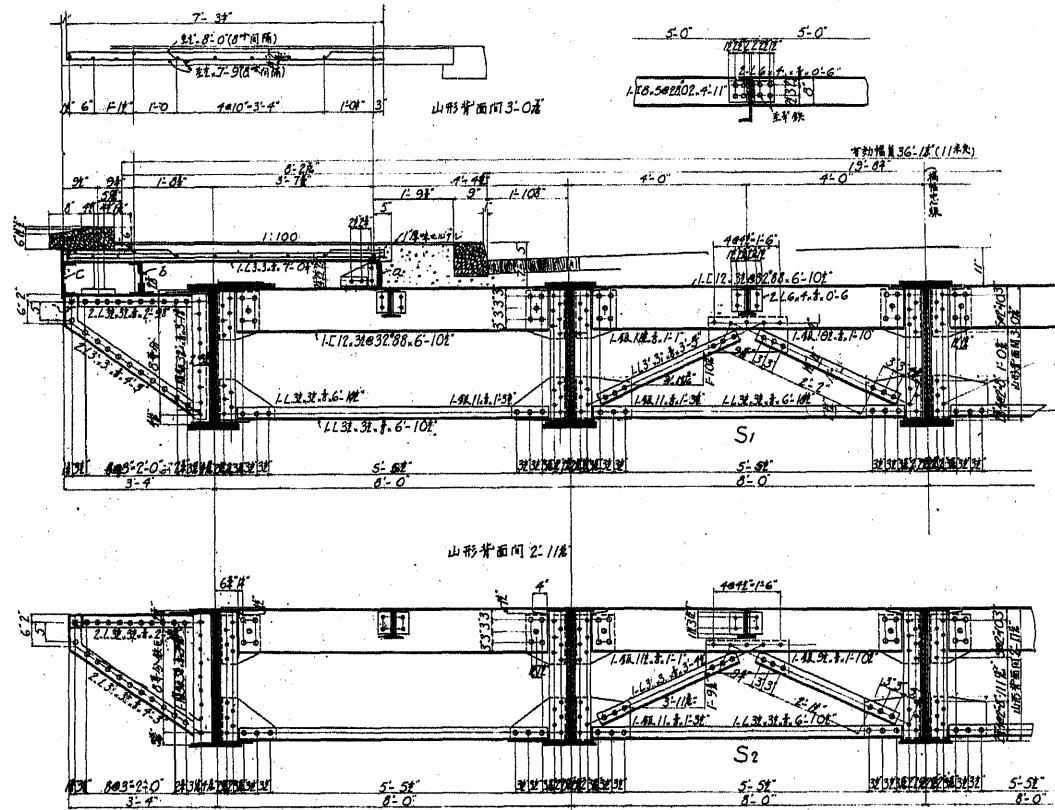


兜橋
中央徑間鋼板桁
支間 50'-0"
一般圖

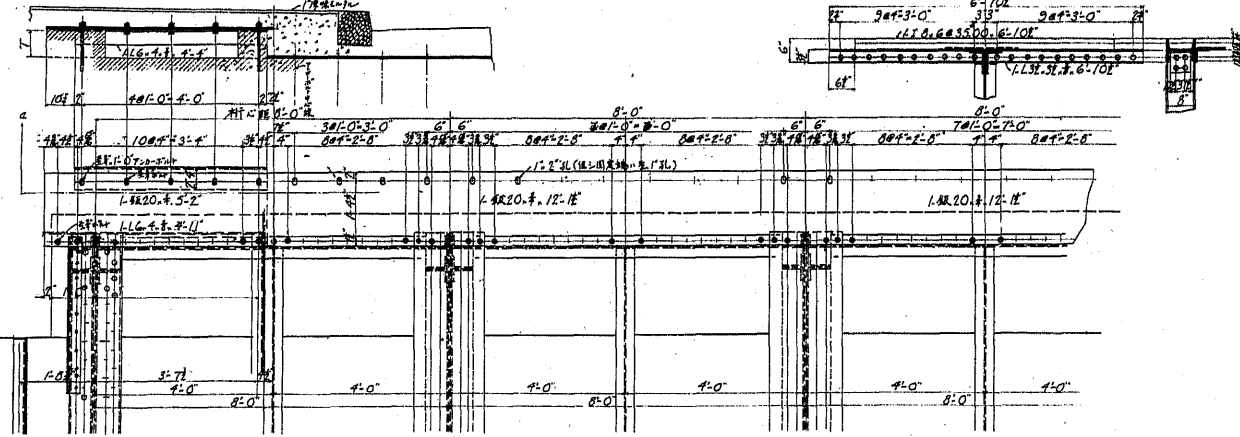
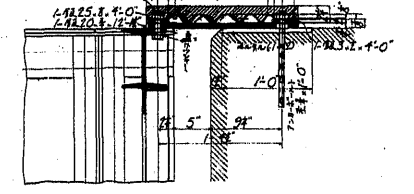
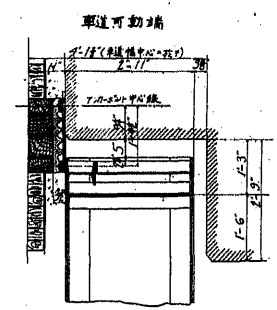
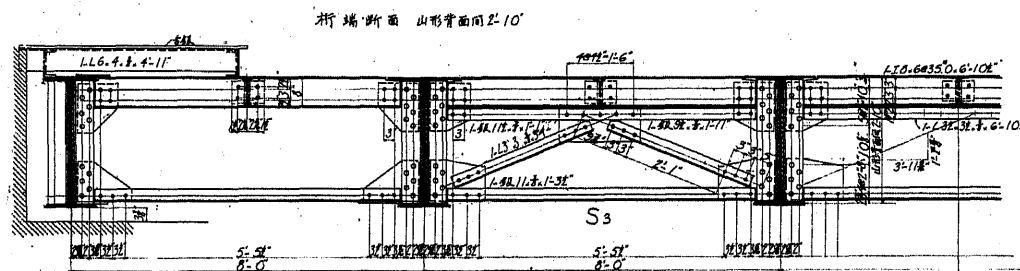
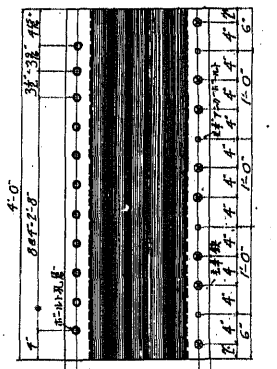
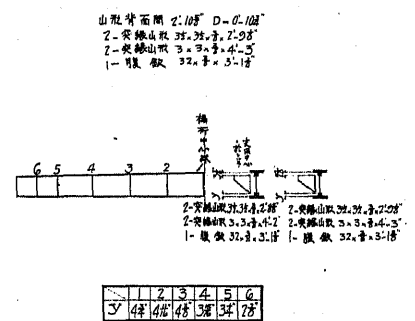
梁橋第七枚 內 第三



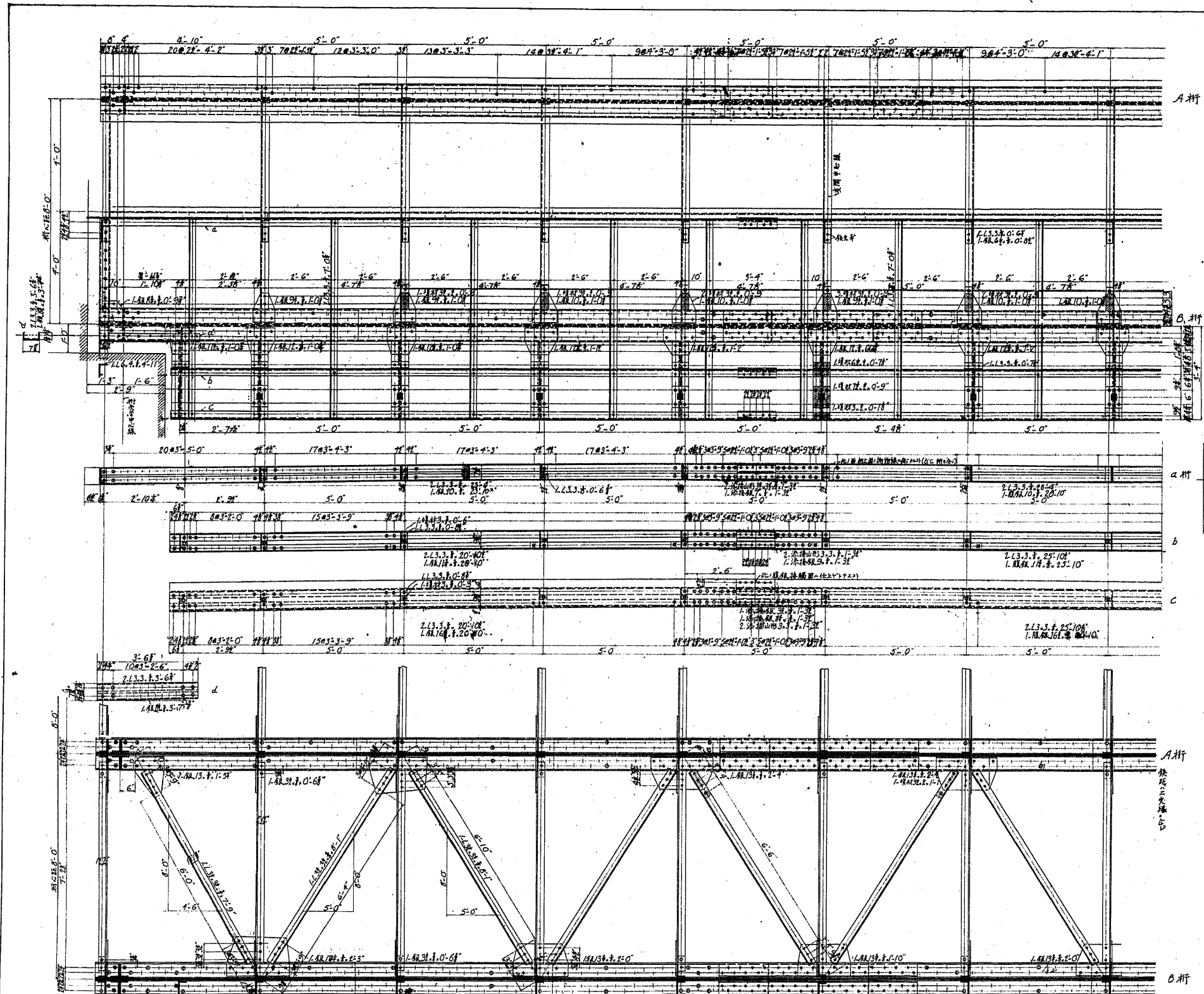
兜橋
中央徑間鋼板桁
支間 50'-0"
主桁



- 鉄 主筋 (特・北・北・北・北・北)
- 工場・普通鉄
 - 炭素鋼鋼材
 - 炭素鋼鋼材
 - 現場・普通鉄
 - 炭素鋼鋼材
 - 炭素鋼鋼材
 - 炭素鋼鋼材
 - 炭素鋼鋼材

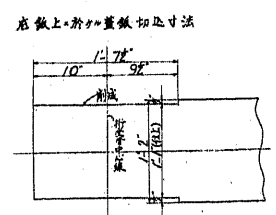
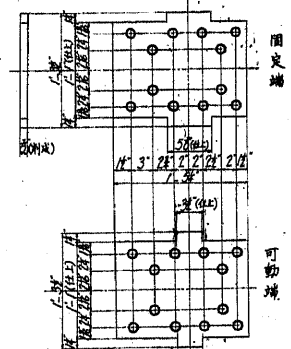


兜 橋
中央徑間鋼板桁
支間 50'-0"
橫 斷

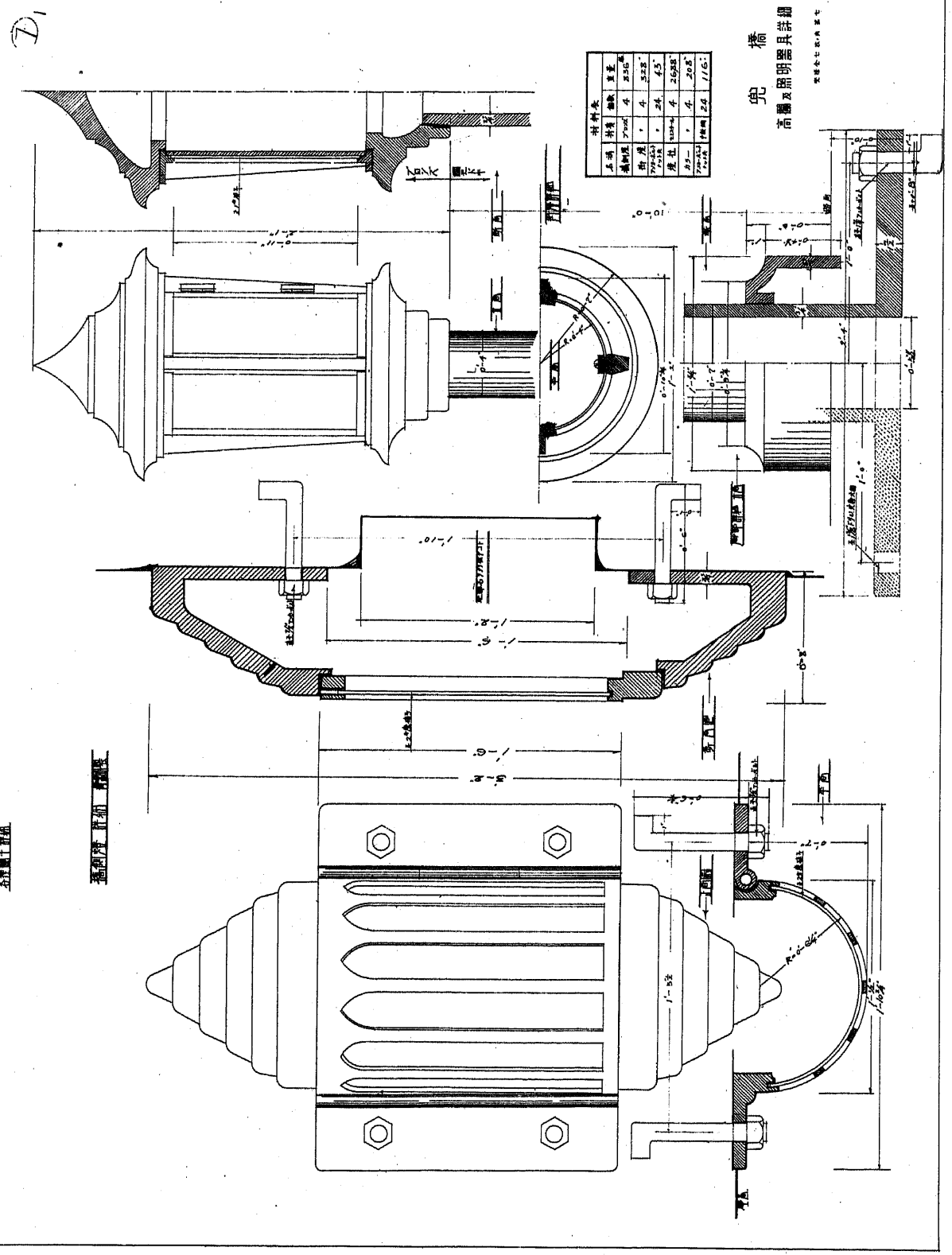
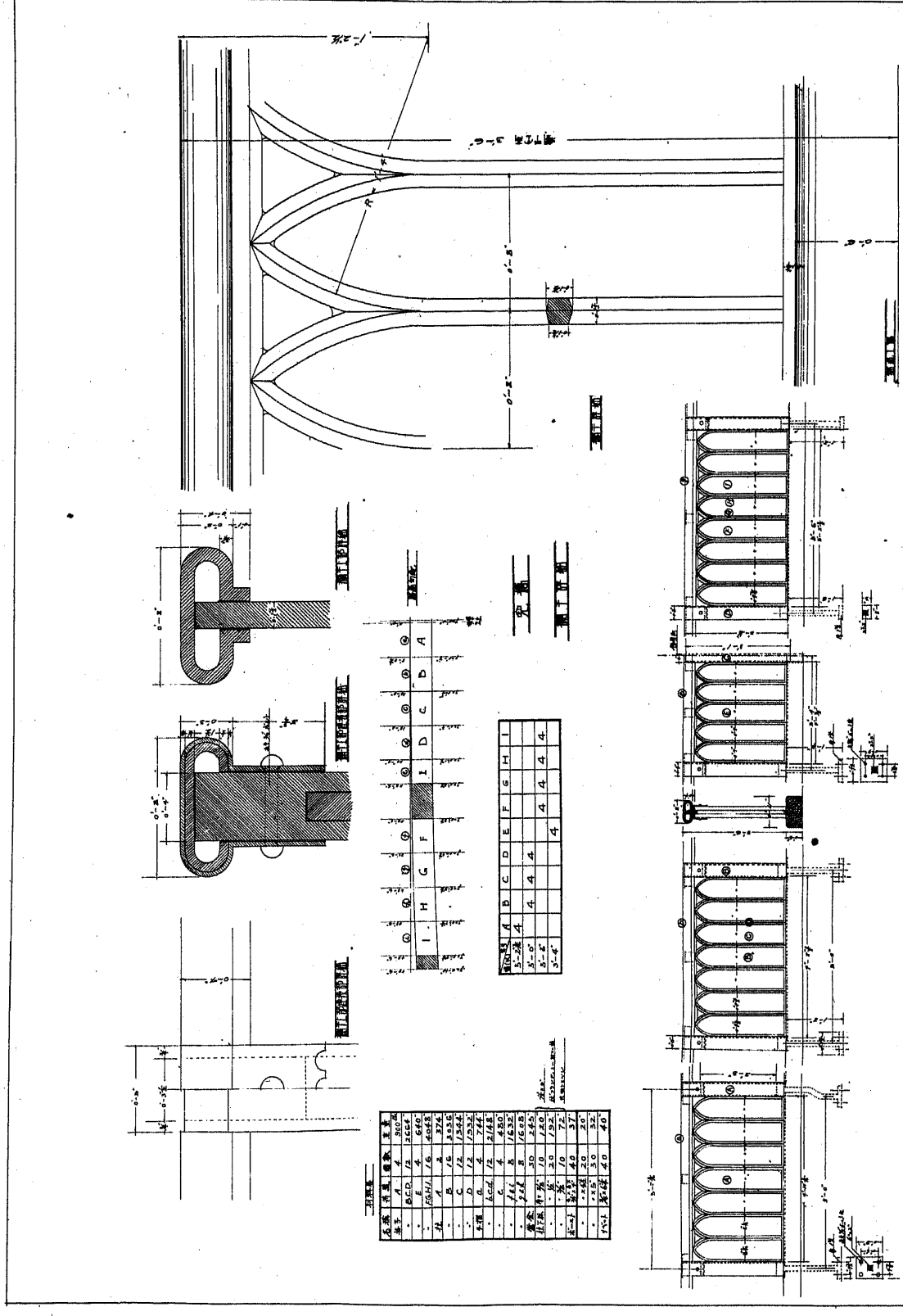


鋼管 (特別鋼管以外)
 ○ 工場製・普通鋼
 □ 鋼管鋼筋部
 ● 鋼管
 ● 現場製・普通鋼
 ● 鋼管鋼筋部
 ● 鋼管
 ● 鋼管鋼筋部
 ● 鋼管
 ● 鋼管鋼筋部
 ● 鋼管
 ● 鋼管鋼筋部

底鋼
 縮尺 1/200



兜橋
 中央徑間鋼板桁
 支間 50'-0"
 歩道平面
 兜橋全七枚中第六



材料表

正項	材料	數量	單位	備註
1	石	1.20	方	1.20
2	木	2.00	方	2.00
3	鐵	1.00	噸	1.00
4	油	1.00	桶	1.00
5	漆	1.00	桶	1.00
6	灰	1.00	方	1.00
7	砂	1.00	方	1.00
8	磚	1.00	塊	1.00
9	瓦	1.00	片	1.00
10	玻璃	1.00	片	1.00
11	銅	1.00	斤	1.00
12	錫	1.00	斤	1.00
13	鉛	1.00	斤	1.00
14	錫	1.00	斤	1.00
15	銅	1.00	斤	1.00
16	鐵	1.00	斤	1.00
17	錫	1.00	斤	1.00
18	鉛	1.00	斤	1.00
19	錫	1.00	斤	1.00
20	銅	1.00	斤	1.00
21	鐵	1.00	斤	1.00
22	錫	1.00	斤	1.00
23	鉛	1.00	斤	1.00
24	錫	1.00	斤	1.00
25	銅	1.00	斤	1.00

橋 欄
高欄及欄間器具詳圖

建築師 蘇兆年 設計