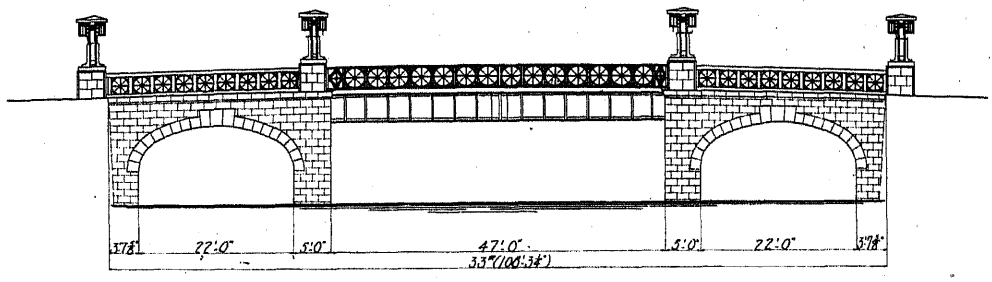
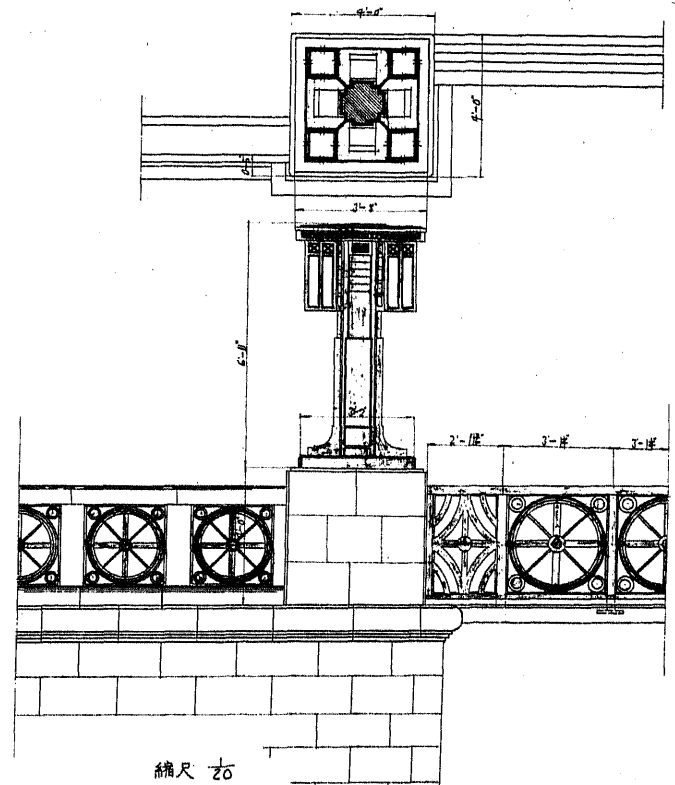
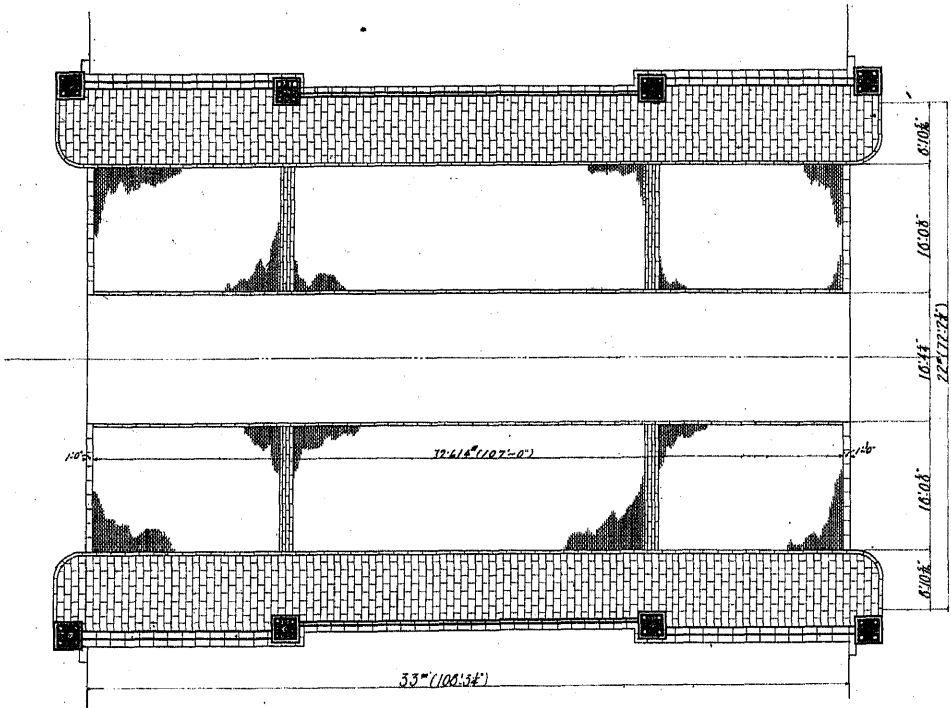


側面

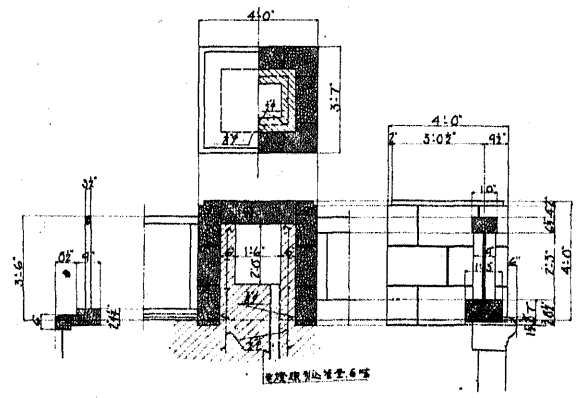


平面



縮尺 1/20

燈柱臺詳細圖
縮尺 1/2 = 1'0"



鐵筋材料表

種類	數量	規格	長度	重量	備註
鋼筋	54	3/8"	6.0'		梁底-11#-12.0' 梁頂-11#-12.0'
鋼筋	32	3/8"	9.0'		梁底-11#-12.0' 梁頂-11#-12.0'
重量合計				32472磅	= 0.45噸

親父橋

橋長 109'-0" 幅員 72'x72"

中央徑間 鋼 鈹 桁

支 間 50'-0"

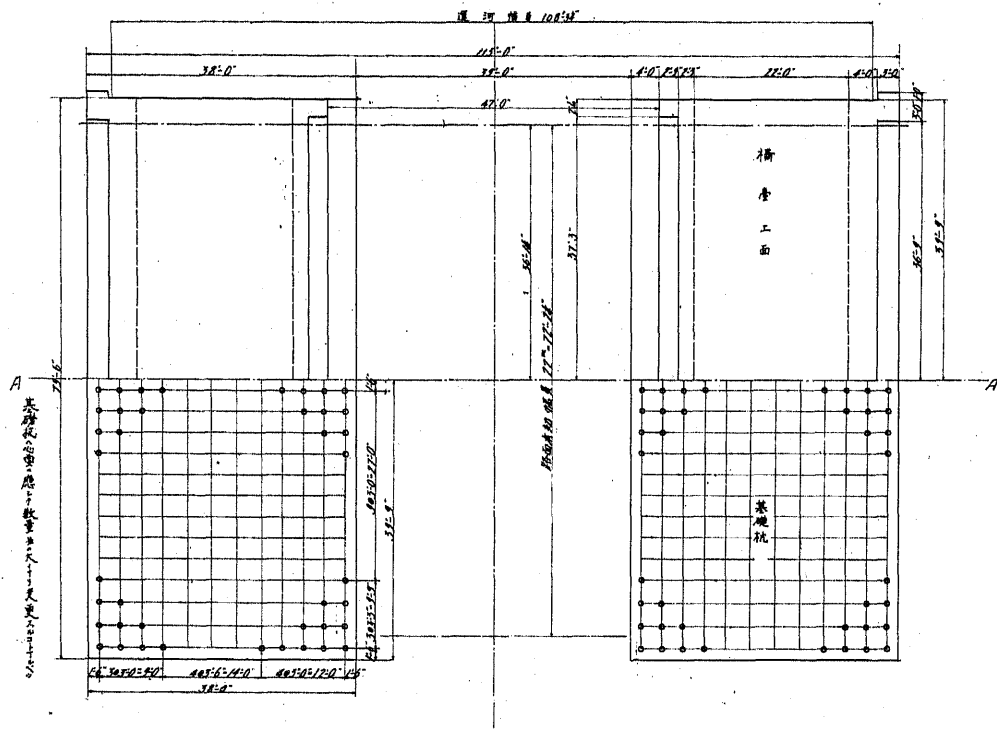
側徑間 鐵筋混凝土框

徑 間 22'-0"

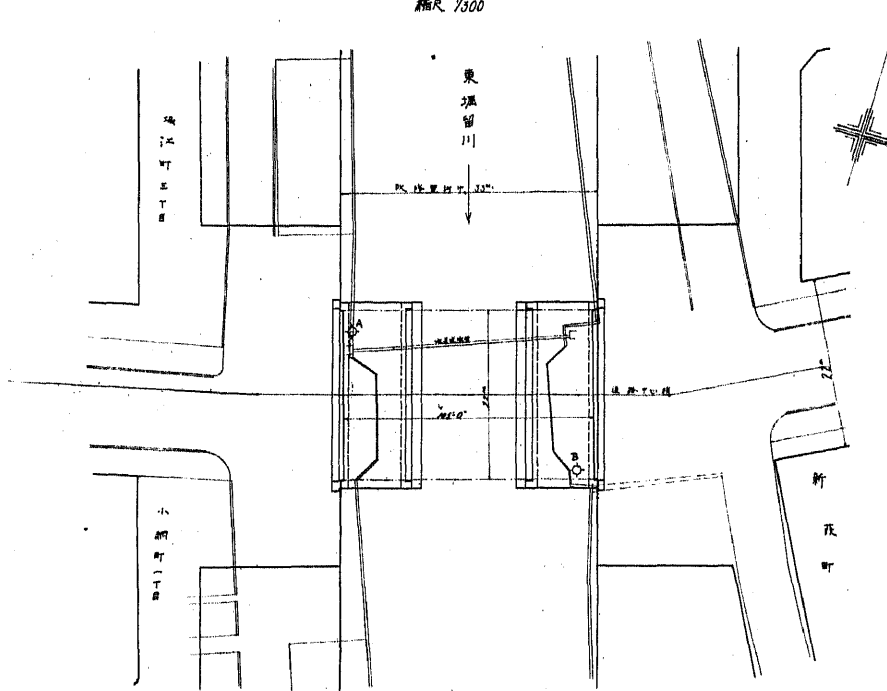
一般圖 其一

親父橋全六板內第一

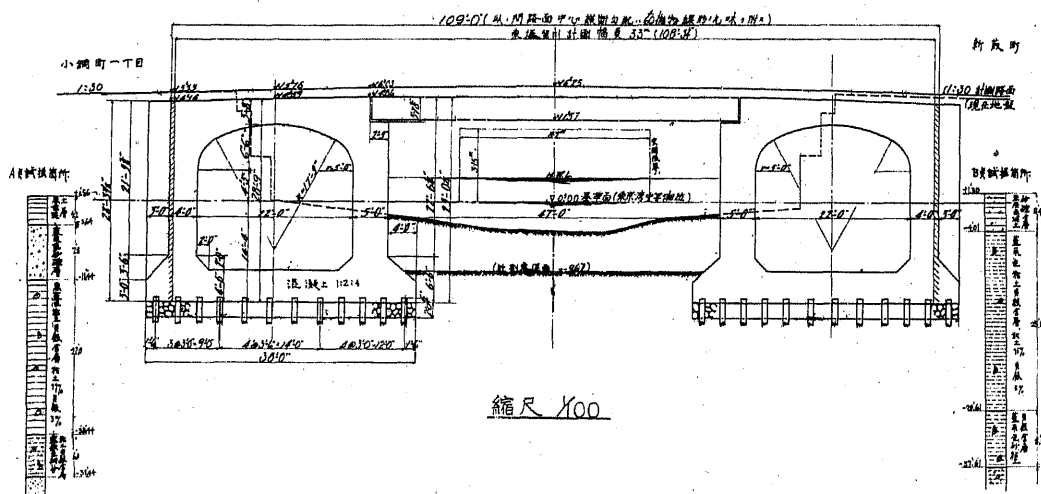
平面圖
縮尺 1/100



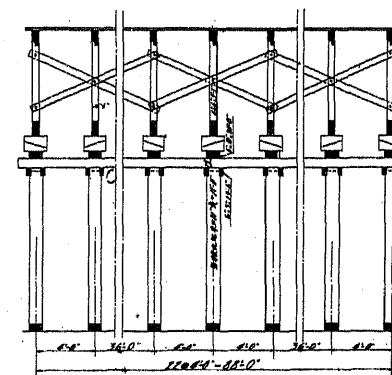
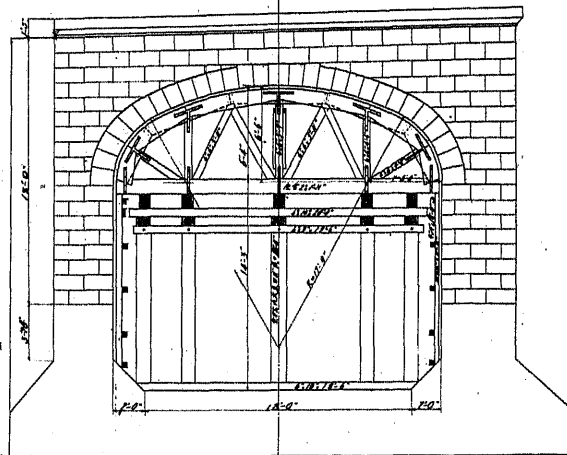
親父橋附近實測平面圖
縮尺 1/500



A-A 断面



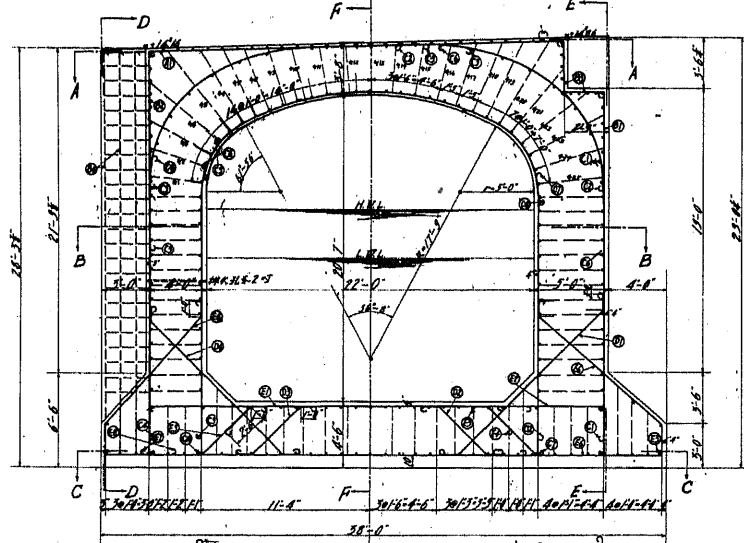
拱架圖 縮尺 1/4'-0"



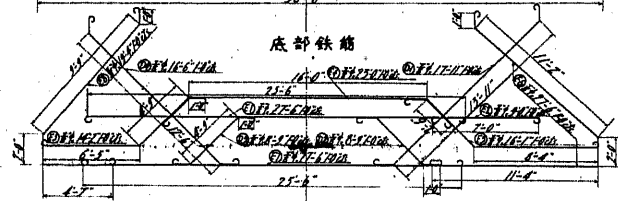
親父橋

橋長 108'-0" 幅員 72'2 1/2"
中央徑間 鋼 鈹 桁 徑間 22'-0"
支間 50'-0" 一般圖 其二

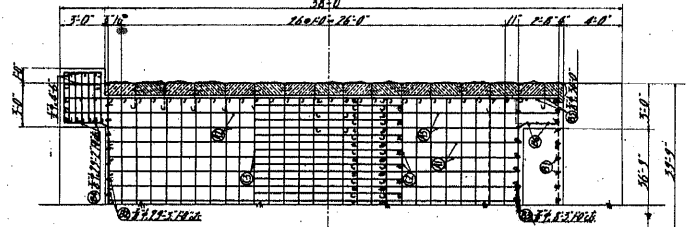
橋臺縱断面



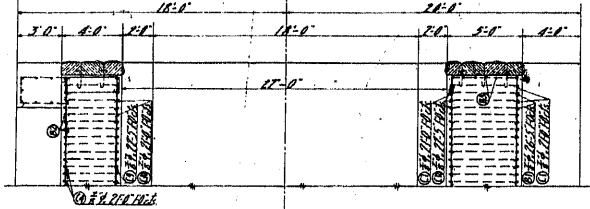
底部鉄筋



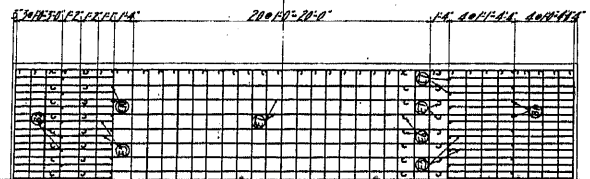
A-A断面



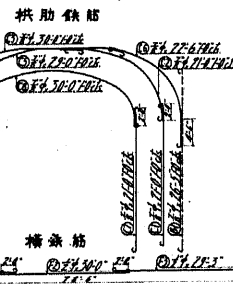
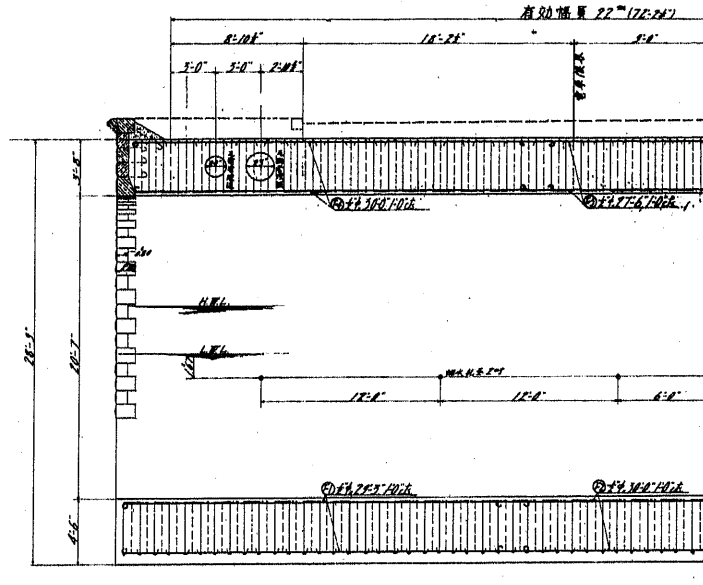
B-B断面



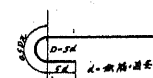
C-C断面



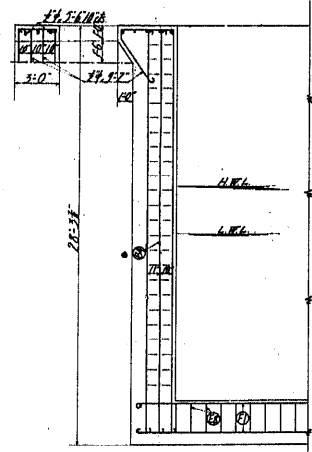
橋臺橫断面(F-F断面)



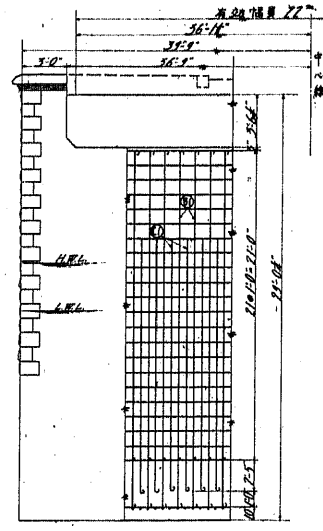
鉄筋端標準曲り方



D-D断面



E-E断面

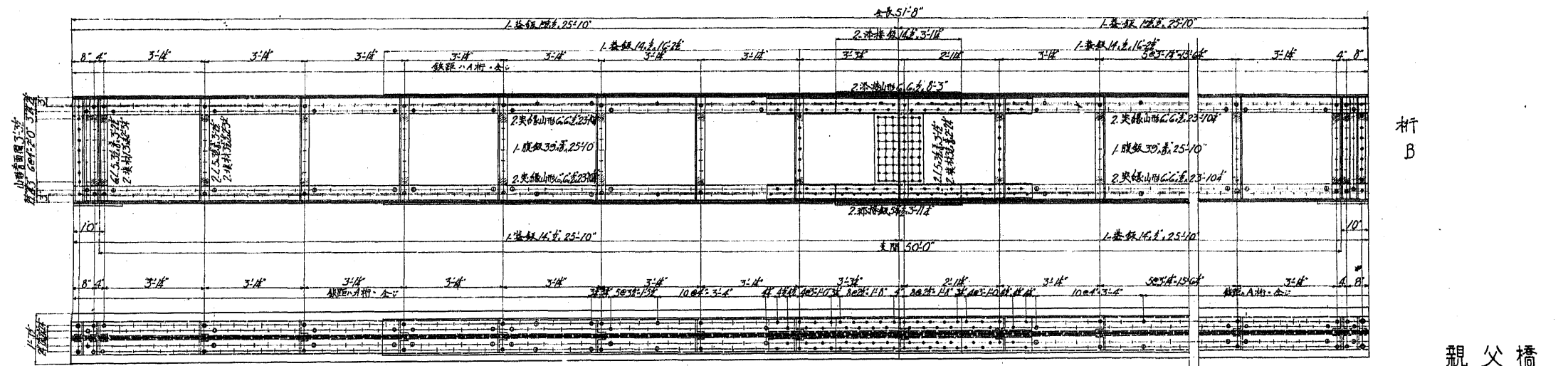
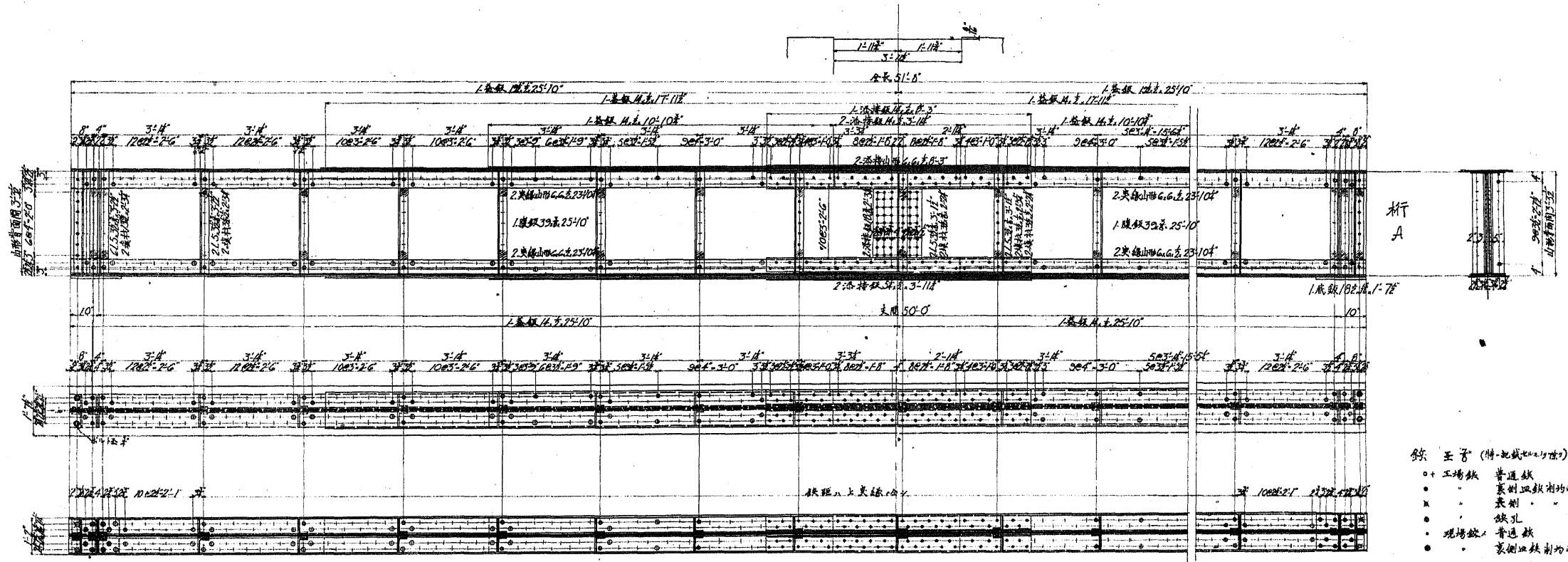


鉄筋材料表

筋種	数量	長さ	重量
A1	116	27'-5"	3160
A2	12	21'-0"	288
A3	12	18'-0"	216
B1	158	26'-5"	4200
B2	158	22'-5"	3500
B3	20	27'-5"	490
B4	30	30'-0"	675
B5	12	7'-0"	156
C1	118	27'-0"	3120
C2	12	21'-0"	288
C3	12	18'-0"	216
C4	180	21'-0"	4032
C5	138	22'-0"	3024
C6	12	21'-0"	252
C7	12	21'-0"	252
C8	12	21'-0"	252
C9	12	21'-0"	252
C10	12	21'-0"	252
C11	12	21'-0"	252
C12	12	21'-0"	252
D1	160	27'-0"	4288
D2	12	21'-0"	288
D3	12	18'-0"	216
E1	160	27'-0"	4288
E2	12	21'-0"	288
E3	12	18'-0"	216
E4	12	21'-0"	252
E5	12	21'-0"	252
E6	12	21'-0"	252
E7	12	21'-0"	252
E8	12	21'-0"	252
F1	160	27'-0"	4288
F2	12	21'-0"	288
F3	12	18'-0"	216
F4	12	21'-0"	252
F5	12	21'-0"	252
F6	12	21'-0"	252
F7	12	21'-0"	252
F8	12	21'-0"	252

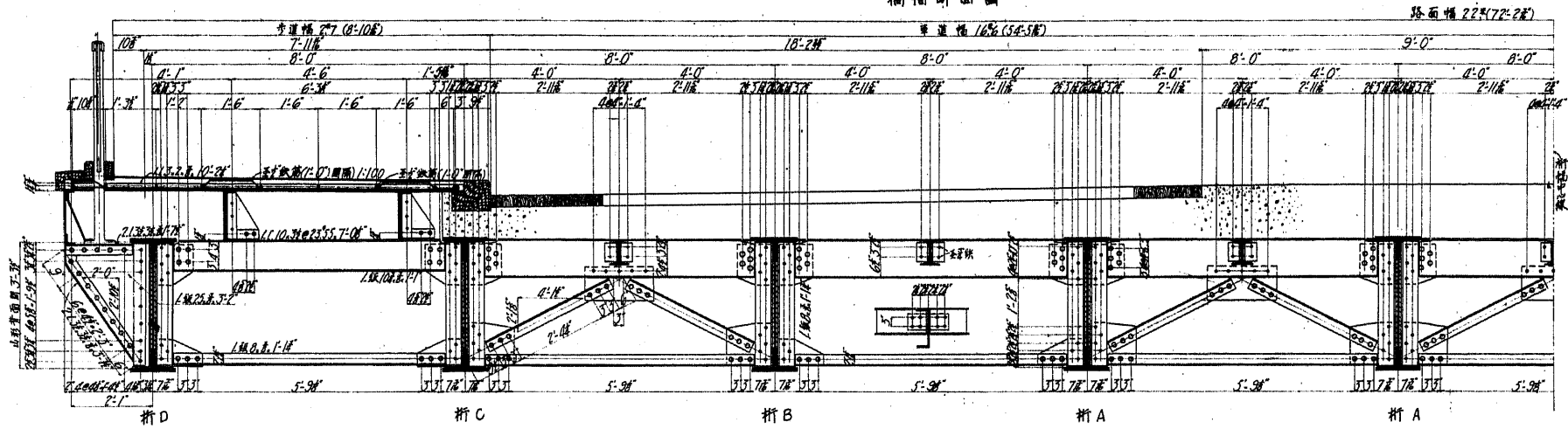
筋種	数量	長さ	重量
G1	12	21'-0"	288
G2	12	18'-0"	216
G3	12	21'-0"	288
G4	12	18'-0"	216
G5	12	21'-0"	288
G6	12	18'-0"	216
G7	12	21'-0"	288
G8	12	18'-0"	216
G9	12	21'-0"	288
G10	12	18'-0"	216
G11	12	21'-0"	288
G12	12	18'-0"	216
G13	12	21'-0"	288
G14	12	18'-0"	216
G15	12	21'-0"	288
G16	12	18'-0"	216
G17	12	21'-0"	288
G18	12	18'-0"	216
G19	12	21'-0"	288
G20	12	18'-0"	216
G21	12	21'-0"	288
G22	12	18'-0"	216
G23	12	21'-0"	288
G24	12	18'-0"	216
G25	12	21'-0"	288
G26	12	18'-0"	216
G27	12	21'-0"	288
G28	12	18'-0"	216
G29	12	21'-0"	288
G30	12	18'-0"	216
G31	12	21'-0"	288
G32	12	18'-0"	216
G33	12	21'-0"	288
G34	12	18'-0"	216
G35	12	21'-0"	288
G36	12	18'-0"	216
G37	12	21'-0"	288
G38	12	18'-0"	216
G39	12	21'-0"	288
G40	12	18'-0"	216
G41	12	21'-0"	288
G42	12	18'-0"	216
G43	12	21'-0"	288
G44	12	18'-0"	216
G45	12	21'-0"	288
G46	12	18'-0"	216
G47	12	21'-0"	288
G48	12	18'-0"	216
G49	12	21'-0"	288
G50	12	18'-0"	216
G51	12	21'-0"	288
G52	12	18'-0"	216
G53	12	21'-0"	288
G54	12	18'-0"	216
G55	12	21'-0"	288
G56	12	18'-0"	216
G57	12	21'-0"	288
G58	12	18'-0"	216
G59	12	21'-0"	288
G60	12	18'-0"	216
G61	12	21'-0"	288
G62	12	18'-0"	216
G63	12	21'-0"	288
G64	12	18'-0"	216
G65	12	21'-0"	288
G66	12	18'-0"	216
G67	12	21'-0"	288
G68	12	18'-0"	216
G69	12	21'-0"	288
G70	12	18'-0"	216
G71	12	21'-0"	288
G72	12	18'-0"	216
G73	12	21'-0"	288
G74	12	18'-0"	216
G75	12	21'-0"	288
G76	12	18'-0"	216
G77	12	21'-0"	288
G78	12	18'-0"	216
G79	12	21'-0"	288
G80	12	18'-0"	216
G81	12	21'-0"	288
G82	12	18'-0"	216
G83	12	21'-0"	288
G84	12	18'-0"	216
G85	12	21'-0"	288
G86	12	18'-0"	216
G87	12	21'-0"	288
G88	12	18'-0"	216
G89	12	21'-0"	288
G90	12	18'-0"	216
G91	12	21'-0"	288
G92	12	18'-0"	216
G93	12	21'-0"	288
G94	12	18'-0"	216
G95	12	21'-0"	288
G96	12	18'-0"	216
G97	12	21'-0"	288
G98	12	18'-0"	216
G99	12	21'-0"	288
G100	12	18'-0"	216

親父橋
側徑間鉄筋混凝土框
徑間 22'-0"

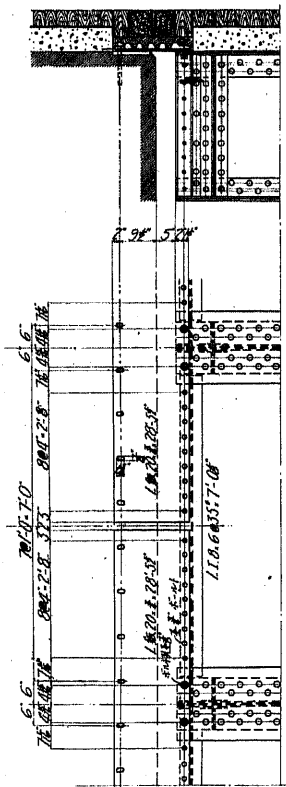


親父橋
中央徑間鋼板桁
支間 50'-0"
主桁

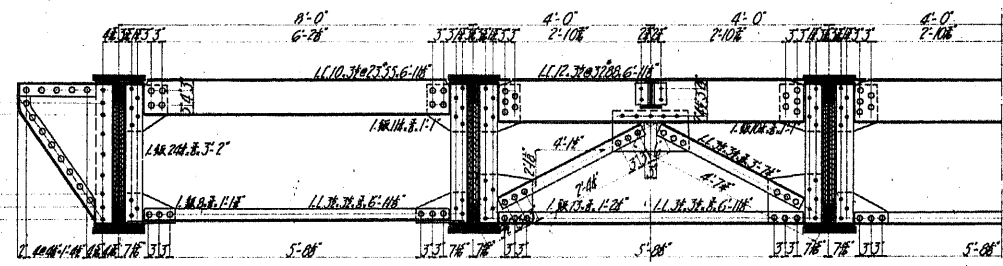
橋幅断面圖



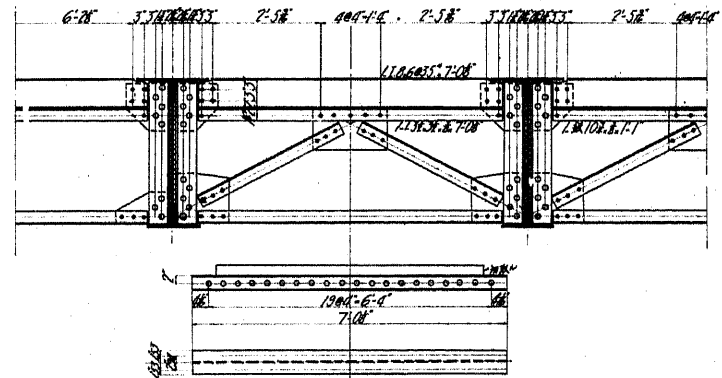
車道部可動端



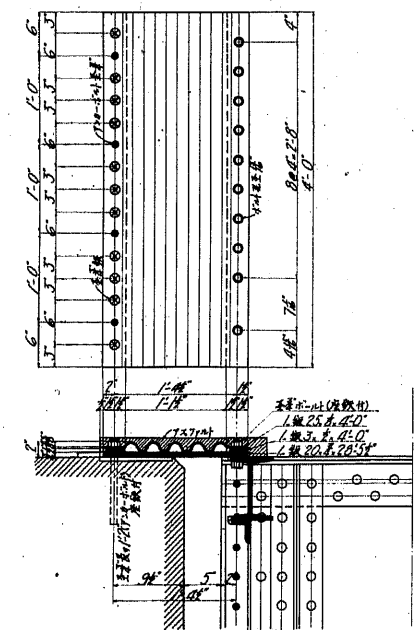
X-X断面圖



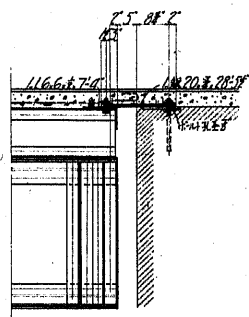
車道桁揚断面圖



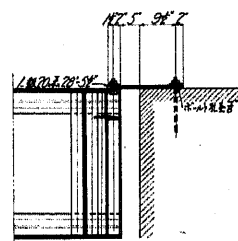
車道部可動端明細圖 断面 4'-0" x 1'-0"



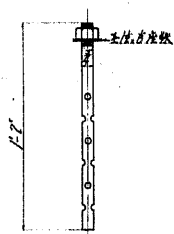
歩道部固定端



車道部固定端



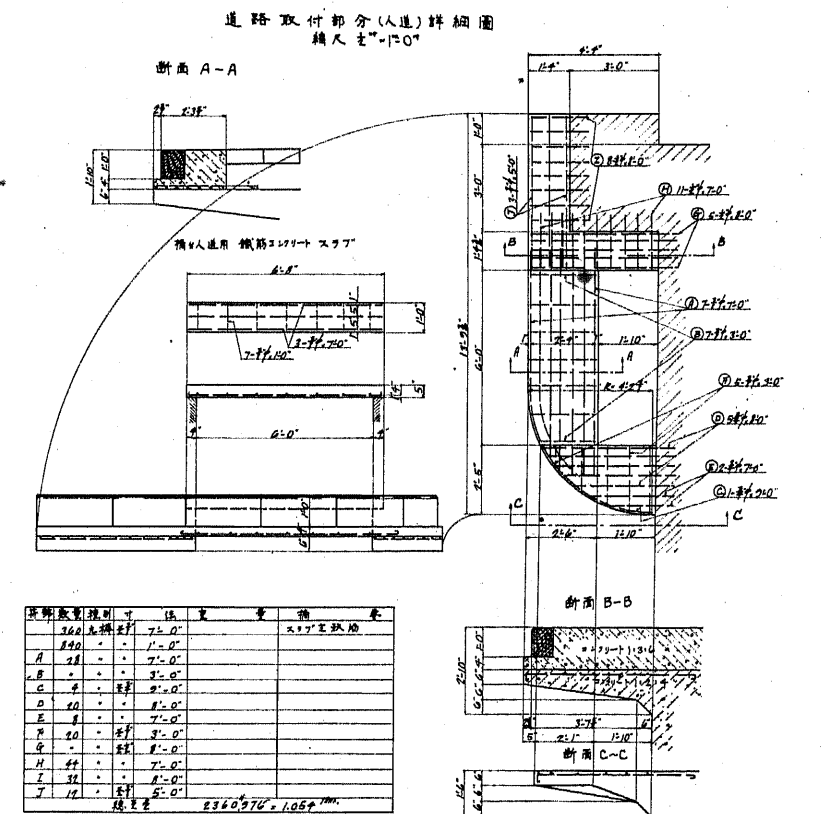
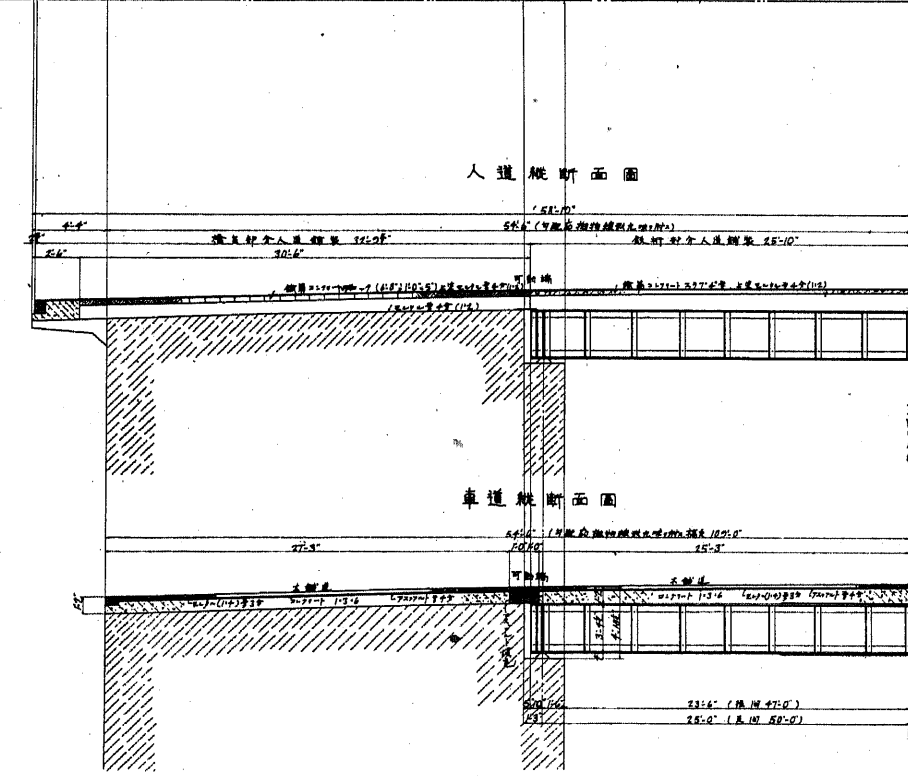
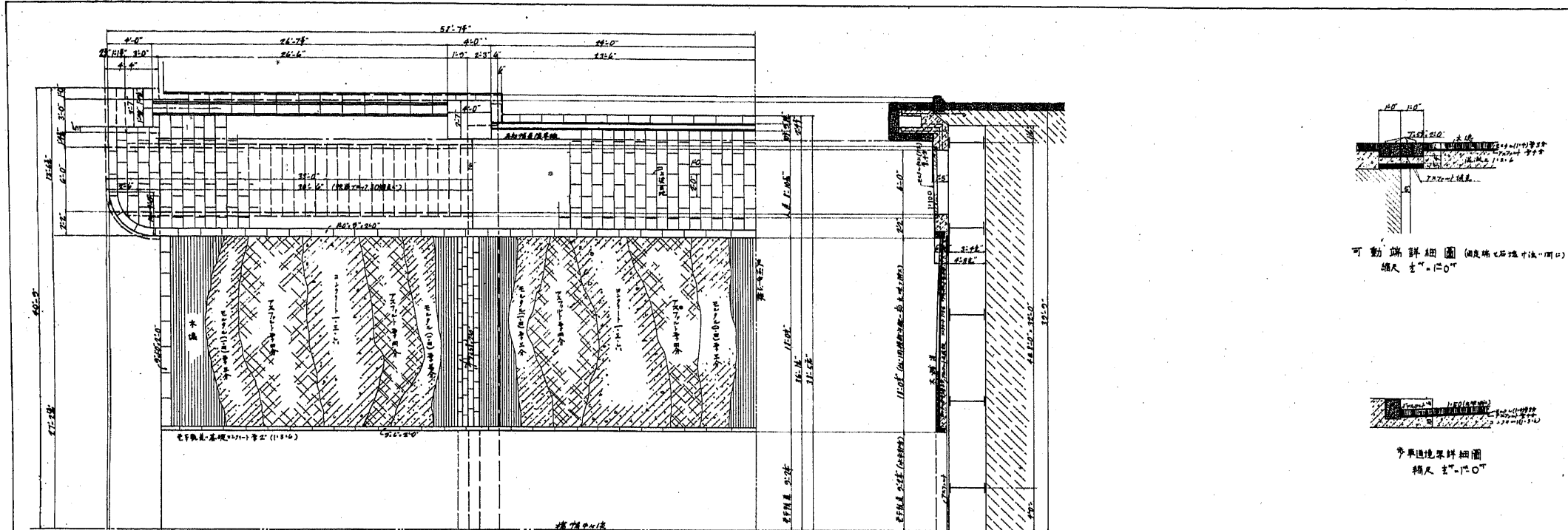
アンカーボルト 断面 5'-0" x 1'-0"



- 注意
- 工務課 / 普通鉄
 - ◎ 工務課 / 普通鋼
 - ◇ 現場取 / 普通鋼
 - 同上 / 現場取 / 普通鋼
 - 断面 / 現場取 / 普通鋼
 - 断面 / 現場取 / 普通鋼

親父橋
中央徑間鋼板桁
支間 50'-0"
横断

親父橋全六枚の内第五



材料	數量	單位	備註
鋼筋	366	磅	2x7 鋼筋
鋼筋	890	磅	1x1 鋼筋
A	28	磅	7x7 鋼筋
B	4	磅	3x3 鋼筋
C	4	磅	3x3 鋼筋
D	80	磅	8x8 鋼筋
E	8	磅	7x7 鋼筋
F	20	磅	8x8 鋼筋
G	4	磅	8x8 鋼筋
H	44	磅	7x7 鋼筋
I	38	磅	8x8 鋼筋
J	12	磅	5x5 鋼筋
總重量		2360970	1.05 噸

親父橋裝鋪