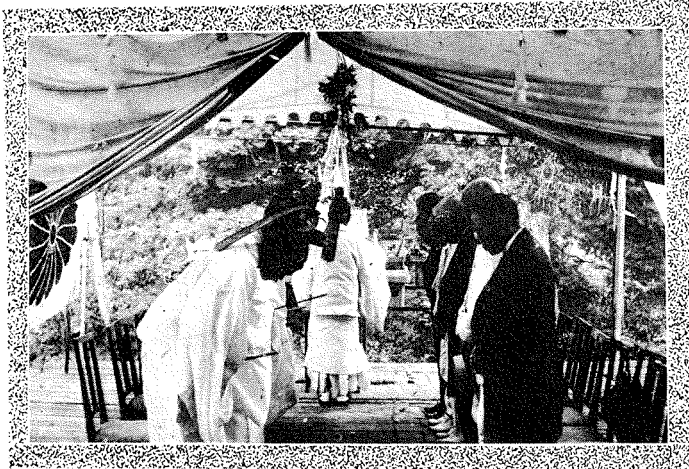
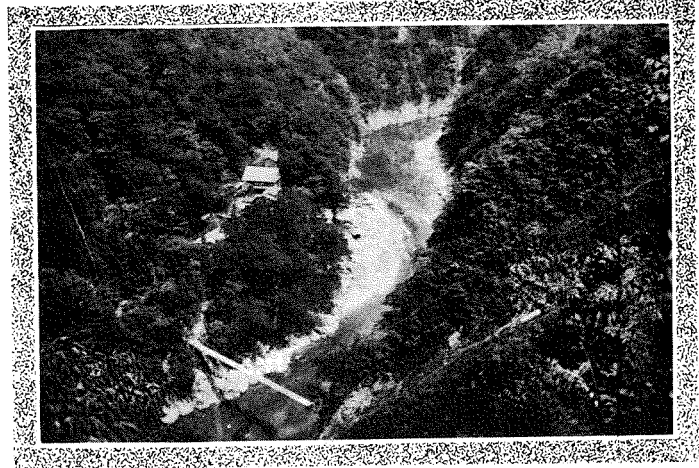


庄川の本流。小牧堰堤ヶ所

(1) A distant view of the Komaki Dam of the Shogawa from down stream.

(1) 下流方面より見たる庄川の小牧堰堤ヶ所の自然態舊景



(2) A religious ceremony for purifying the site was held on July 28th, 1922, upon which Mr. Soichiro Asano attended. The third person from right is Mr. Asano.

(2) 小牧堰堤起工地鎮祭
(大正十一年七月二十八日) 右より三人目は社長 淺野總一郎氏

(3) Men who are working over there can only tell you how it was and is difficult to complete the plant, struggling with ever lasting silver snow.

(3) 丈餘の積雪に悩みつゝ準備工事は運ぶ

