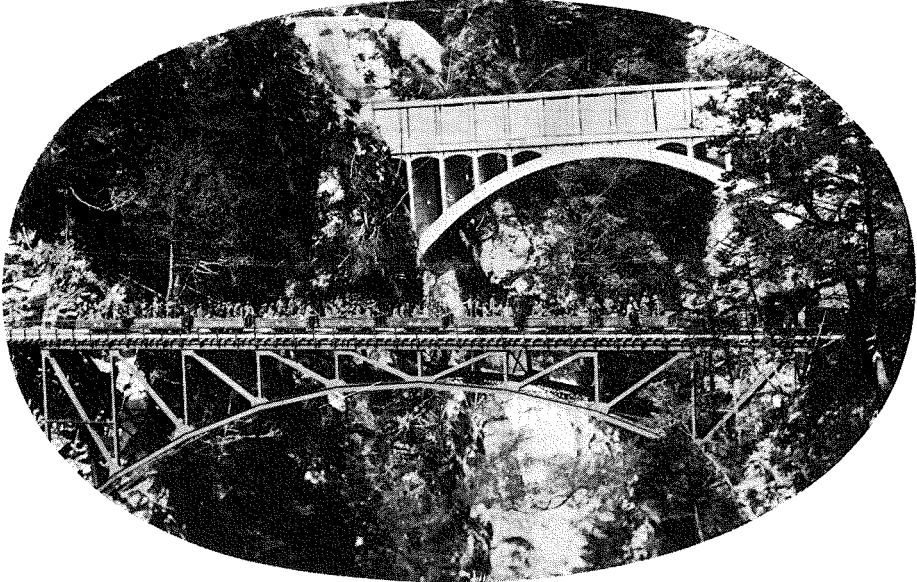
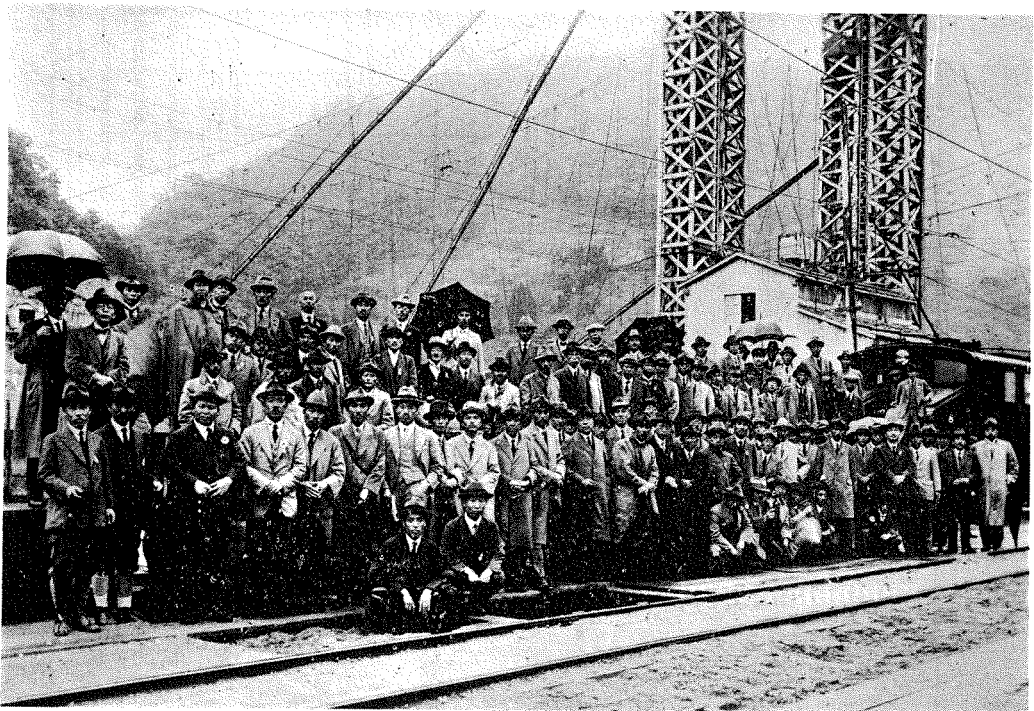


庄川及び黒部川に於ける土木學會視察團一行



- (1) Japanese Society of Civil Engineers held an inspection party to leading construction sites. You will see gentlemen are looking at you in many transfer cars. This was snapped on May 14th., when they visited Yanagawara Station.
- (1) 黒部川溪谷に於ける、土木學會視察團一行（五月十四日）
後は 柳河原発電所の跡曳水路橋。橋は 日本電力会社の専用軌道。



- (2) When they visited the Komaki Dam of the Shogawa Hydro-Electric Power Company on May 13th.
- (2) 庄川水力の小牧堰堤工事場に於ける土木學會視察團一行（五月十三日）