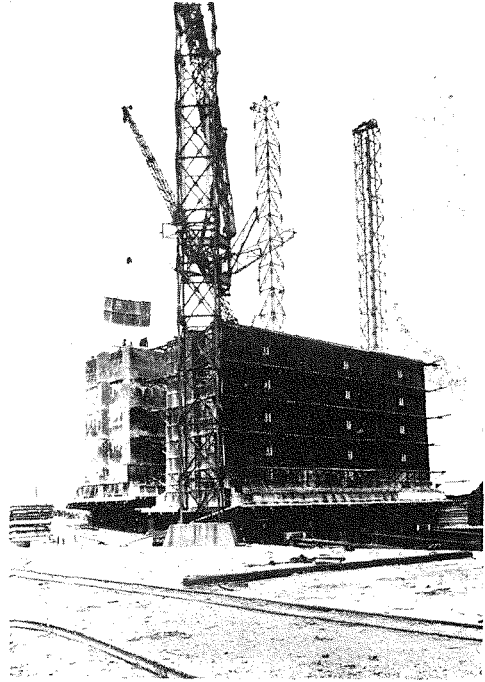


コンクリートケーンを使用したる岸壁の断面圖

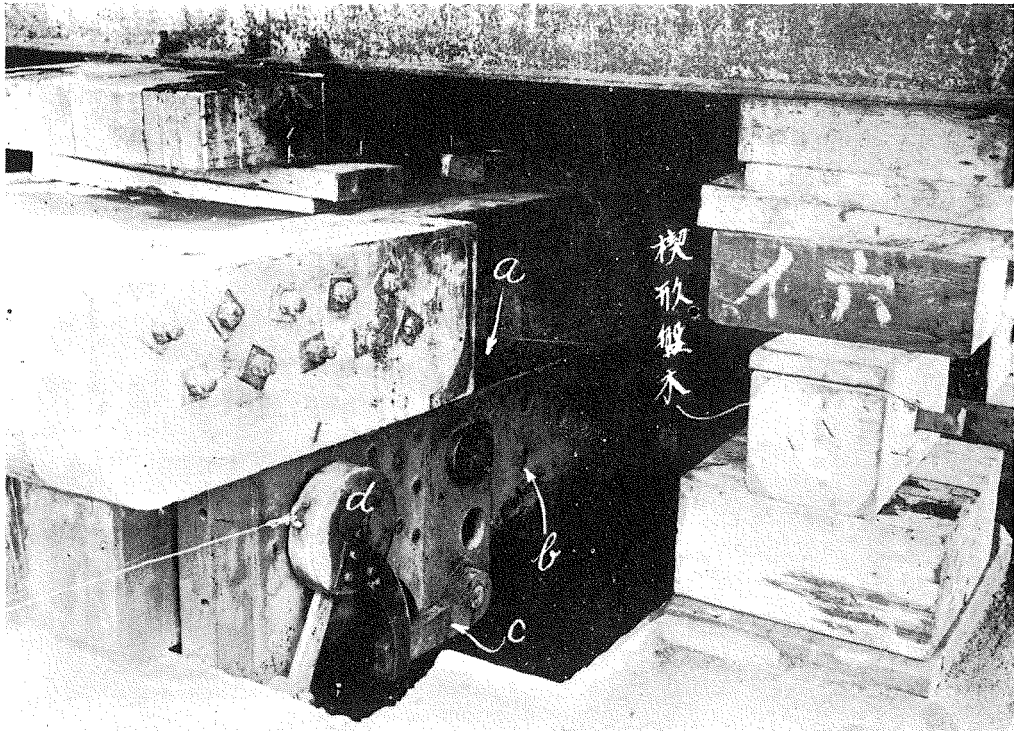
- (2) 型枠取外し作業
型枠は鐵製にして鐵板の厚さ $\frac{1}{16}$ 吋、その重量
一組に付き 68.5 噸。

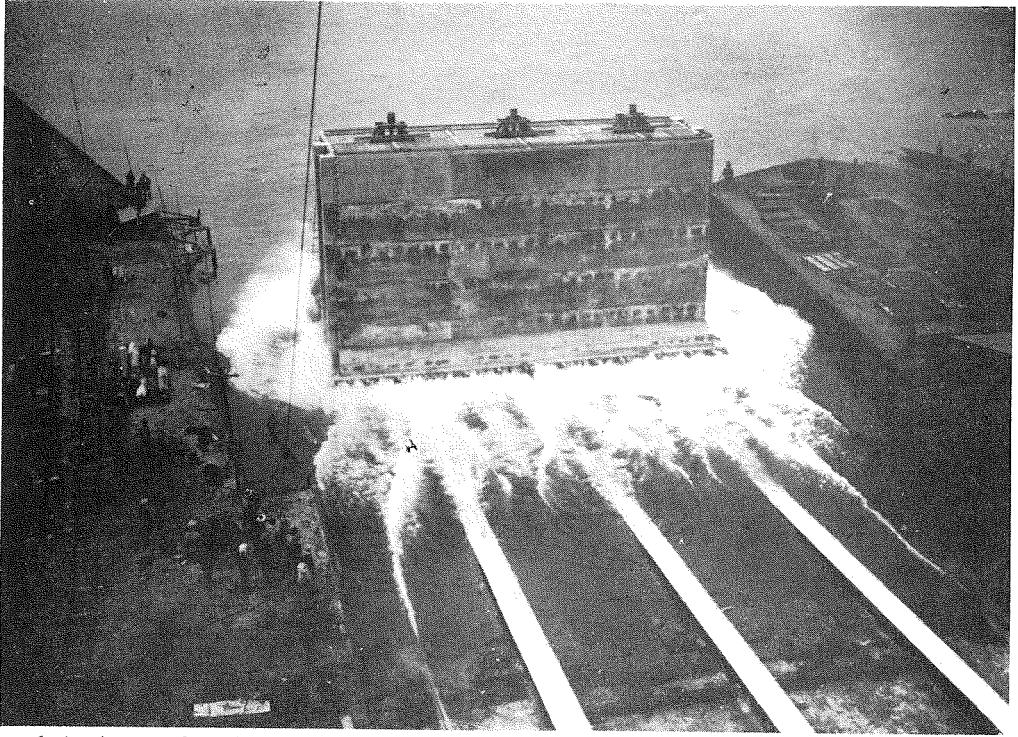
- (3) トリツガー及び盤木組立狀況(本文参照)



(2) Unassembling of framing.

- (3) Assembling of triggers and temporary foundation lumbers.

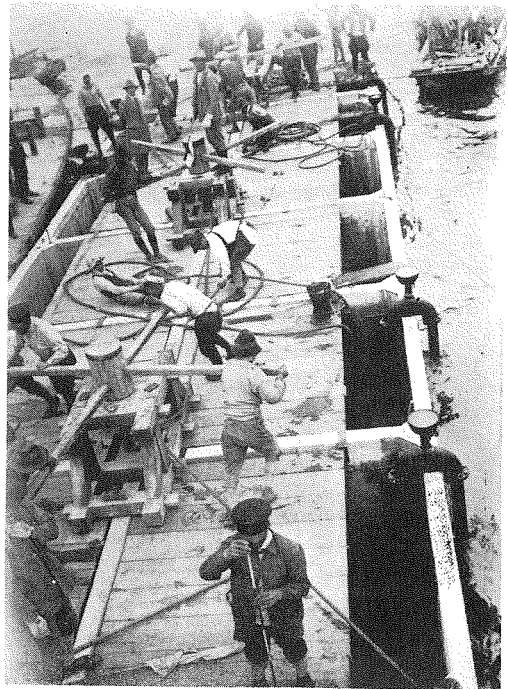




(4) A snap shot photographed immediately after the caisson is started.

(4) ケーソン進水の瞬間

(5) ケーソン沈設の状況(岸壁側所)



(5) When it arrived its destination.