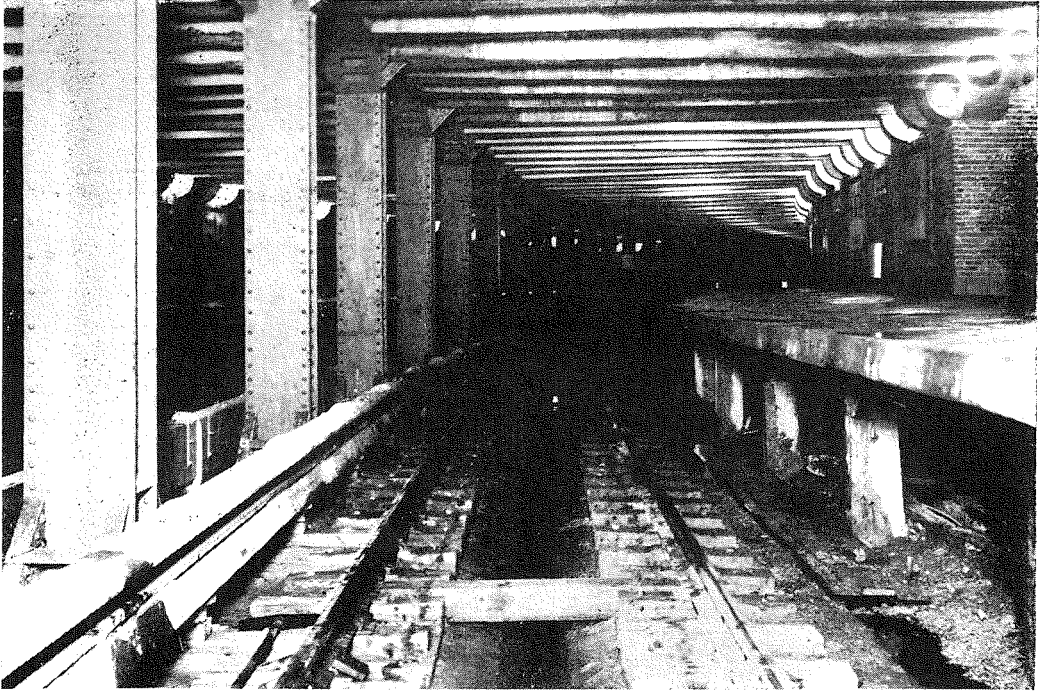


The Tokyo Under-Ground Railway Company has opened a part of their proposed sub-way line in Tokyo City for public service. It is measured by 1 mile and 27 chains from Uyeno to Asakusa where is noted for its amusing propriety. One remarkable evok was made in Japanese railway history, it may be said



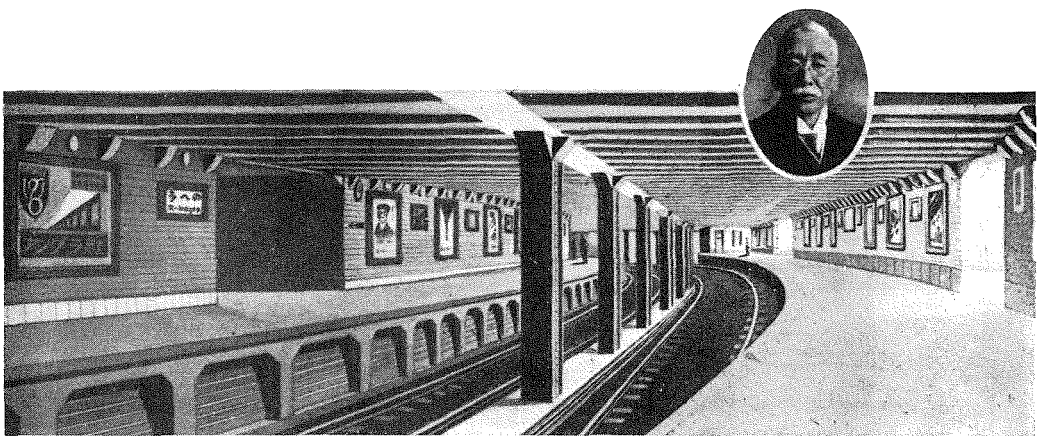
(1) 上野停車場完了の景、曲線、半径 700 呎

(1) Uyeno under-ground railway station completed. Curvature-radius is 700 ft



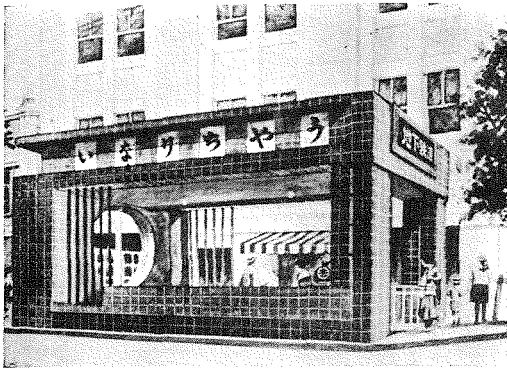
(2) 地下鐵道のレール敷設の景

(2) Laying rails in the tunnel.



(3) 上野驛プラットホーム、圓内は技師長  
遠武勇熊氏

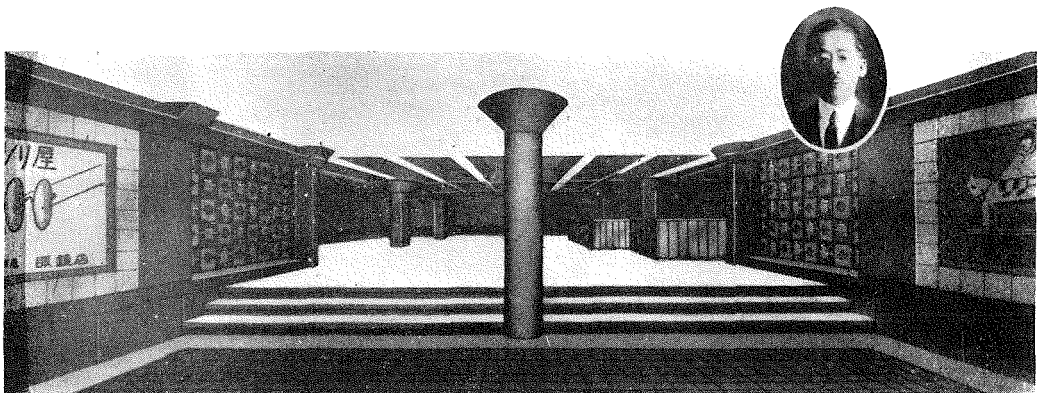
(3) Plat-form completed. A gentleman in an  
insertion shows Mr. U. Totake,  
chief-engineer of the company.



(4) 稲荷町停留場出入口の景  
(4) Entrance for the Inaricho Station.

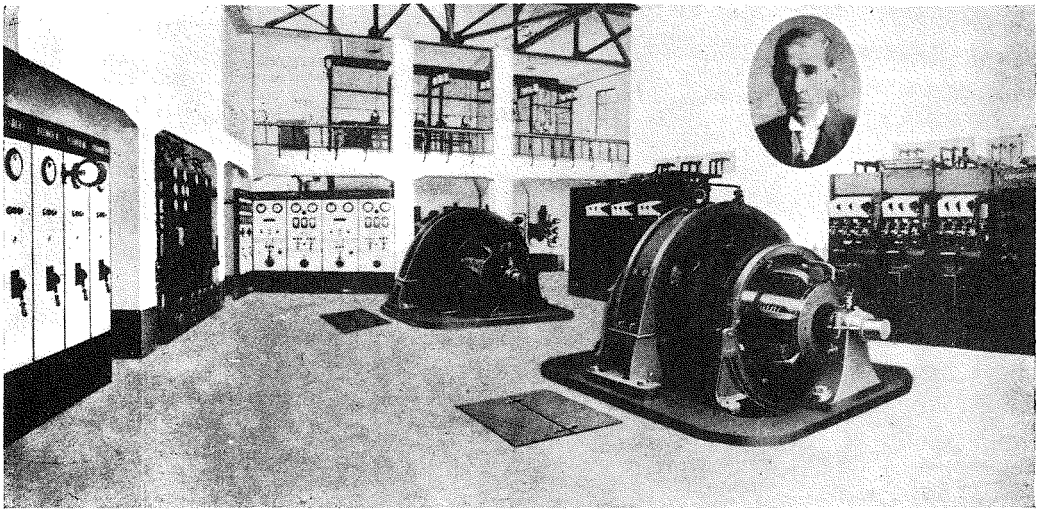


(5) 田原町停留場の景  
(5) Interior view of the Tawaramachi Station.



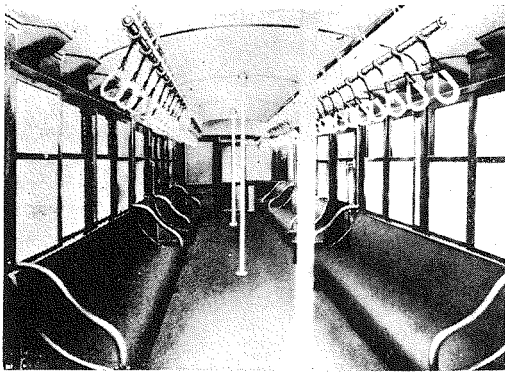
(6) 浅草驛客溜の景、圓内は建設課長  
愛甲勇吉氏

(6) Interior hall of the Asakusa Station. An  
insertion shows Mr. U. Aiko,  
construction dep's manager.

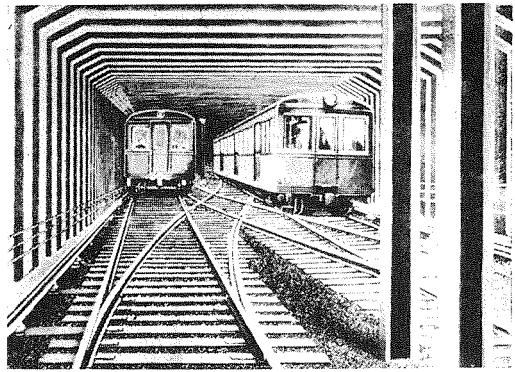


(7) 上野變電所内部の景、圓内は電氣課長  
林昭徳氏

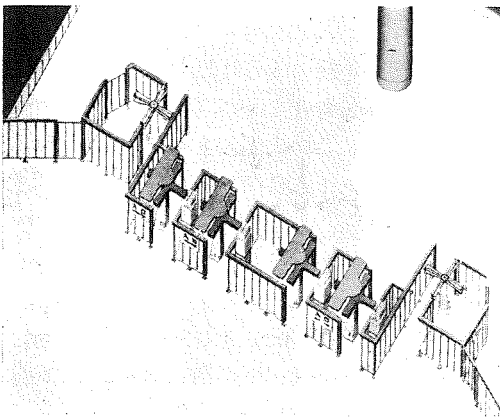
(7) The Ueno sub-station. Gentleman shown  
is Mr. S. Hayahsi, Electric dep't manager.



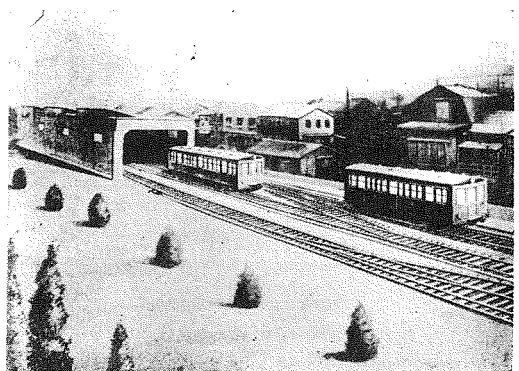
(8) 電車内部の景  
(8) Interior view of a steel car.



(9) 浅草驛交叉五線の景  
(9) Asakusa terminal.



(10) 停車場改札口(ターンスタイル、パッシ  
メーター)  
(10) Wicket with automatic turn-style  
pass-meter.



(11) 上野電車庫の景  
The Ueno car house.