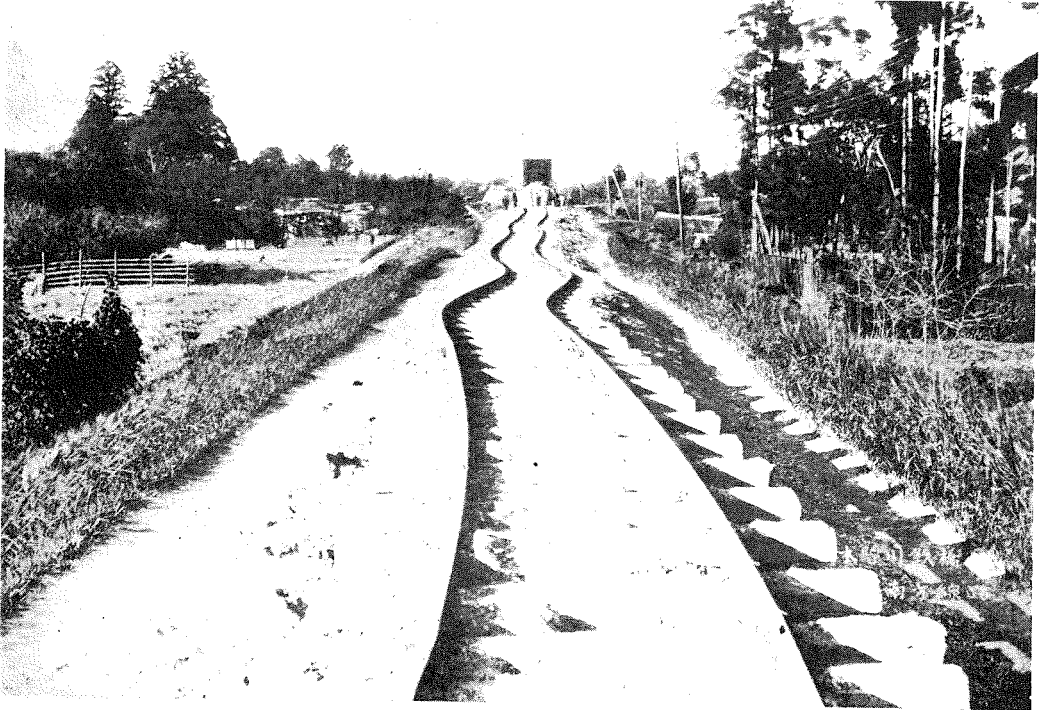
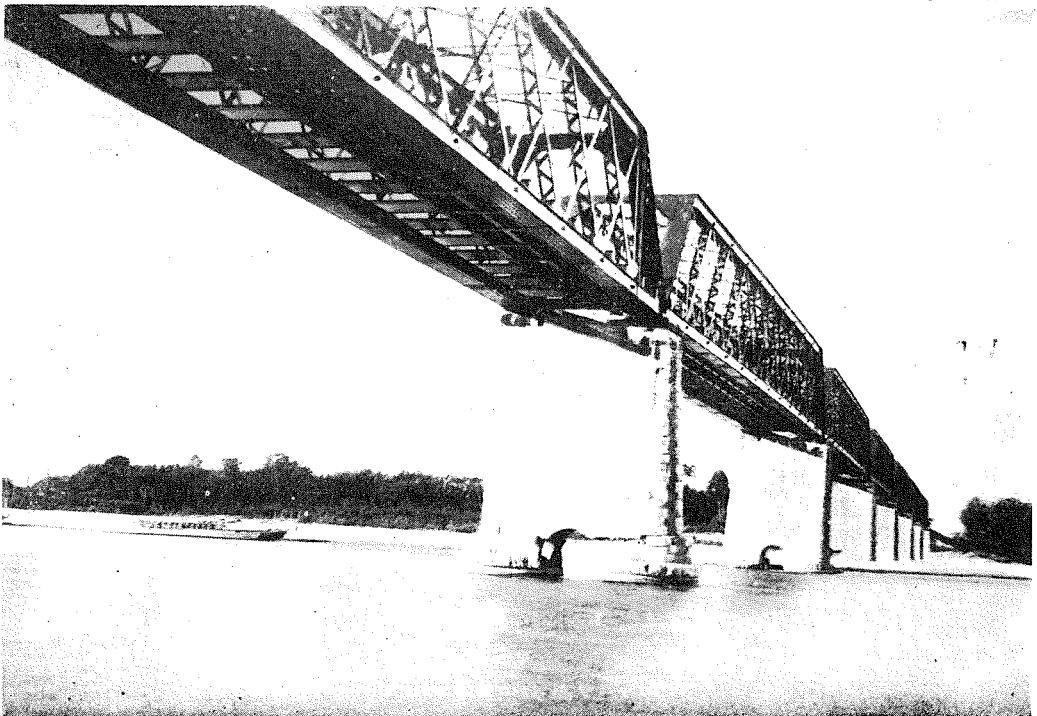


明治二十四年十月濃尾大地震の景 (前號の續き)



(5) 木曾川鐵橋南方線路

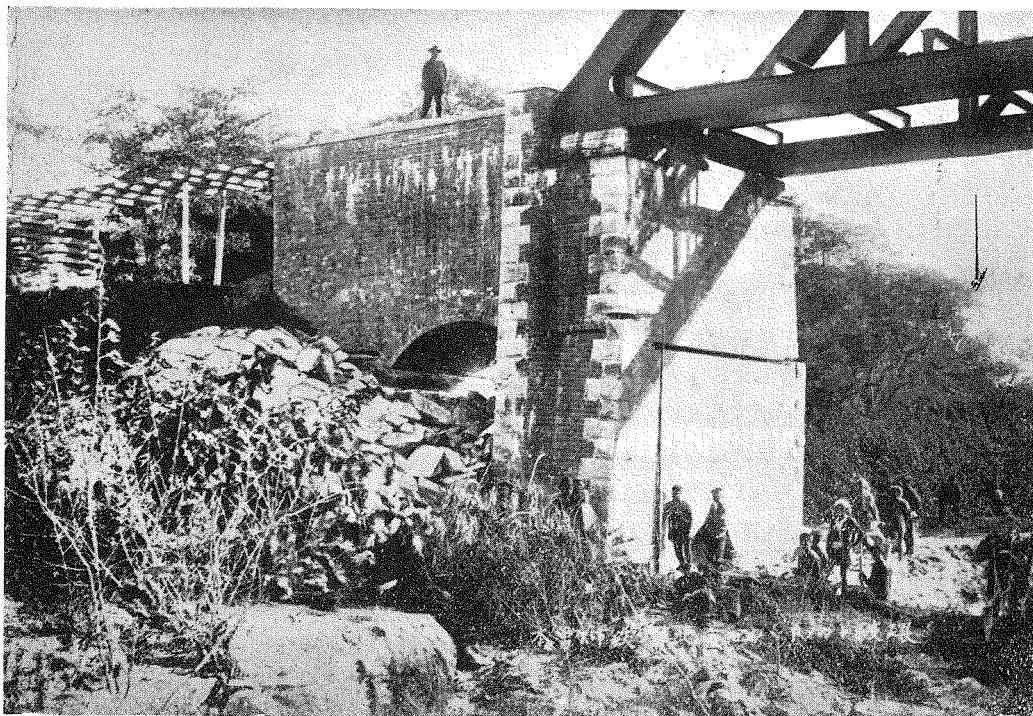
(5) An earth-quake which was happened in 1891 was one of big shakes in Japan. It destroyed many railway bridges. The picture shows the Kisogawa-railway bridge.



(6) 木曾川鐵橋ピヤ破損の狀

(6) Piers on same in damaged condition.

明治二十四年十月濃尾大地震の景 (前號の續き)



(7) 木曾川鐵橋北アバウトメント破壊の狀 (7) Damage on abutment of the Kisogawa-Railway bridge.



(8) 岐阜市中の景 (8) A certain view in Gifu-City.