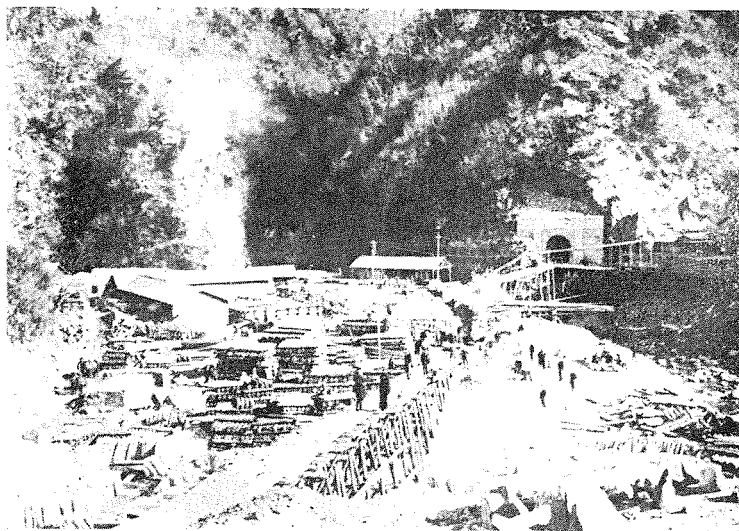


(1) The Sasago Tunnel was constructed about thirty years ago. Engineers in charge were clever in using electric cars for transporting waste ore from Inside.

(1) 笹子隧道東口工事中、(約30年前) 坑内より掘鑿の岩石を電車にて運搬の實況



(2) The west side of same. Light railway was in service.

(2) 笹子隧道西口工事中(約30年前)
中央にある棧道は輕便鐵道にして建物は假倉庫鍛冶工場及び發電所等