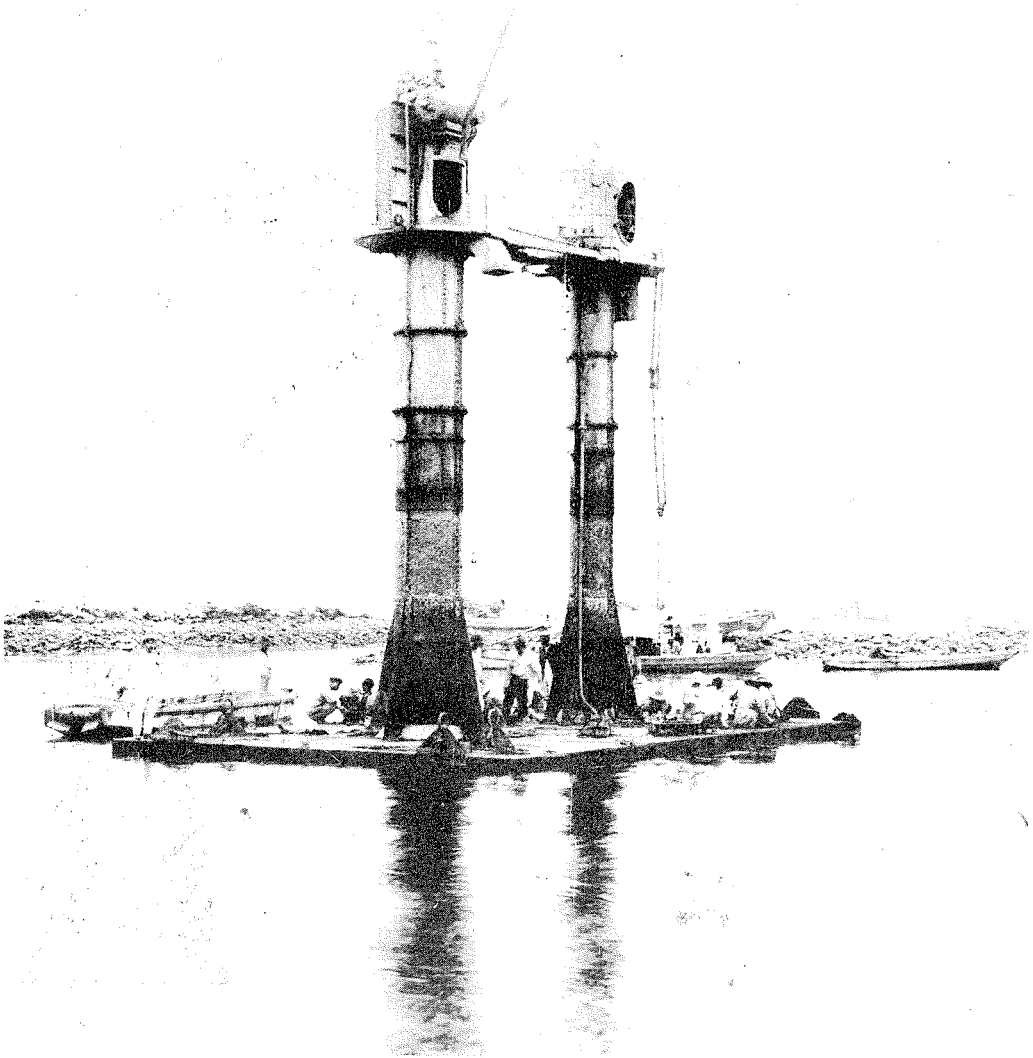


Dr. Nakayama had a Clear foresight to Use the Pneumatic caisson in constructing the
Yokohama harbour some thirty years ago.



約三十年前に横濱港工事に中山博士が設計したる
日本最初のニューマチックケーソン使用中の状況

(1) 潜水函上部
(1) Upper part of the pneumatic Caisson.



(2) 潜水函内に於る岩盤掘鑿

(2) Rock Excavation in the Pneumatic Caisson.