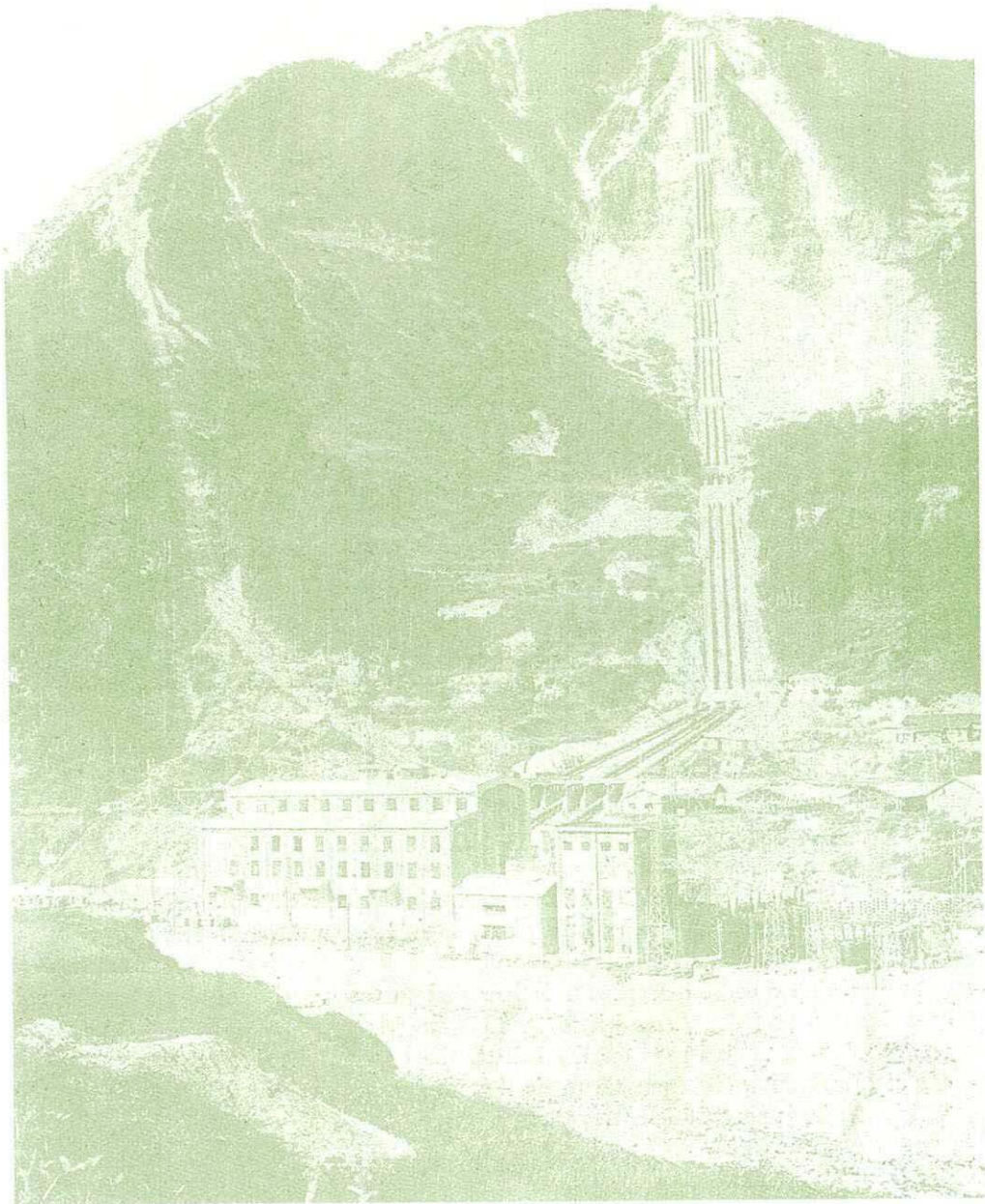


土木 工事畫報 建築

THE KOJI GAHO (AN ILLUSTRATED CONSTRUCTION REVIEW)

第一卷 第二號 VOL. 1. NO. 2



■ 信越電力株式會社大正電廠全景圖

東京・丸ノ内 工事畫報社 仲通ノ四號ノ七

大正十四年三月二十三日發行(每月一回十五日發行)
大正十四年三月二十日印刷納本

ELECTRIC TAMPER & EQUIPMENT Co.

RAILWAY EXCHANGE BUILDING
CHICAGO, ILL.



A TYPICAL OPERATING VIEW OF JACKSON ELECTRIC TIE TAMPERS AND POWER UNIT.

Description: 1.25 K. W., 110 volt, 3 phase, 60 cycle generator, belted to 5 H. P., 4 cycle, air-cooled gasoline engine.

weight: 490 pounds net. can be carried by two men.

Capacity: Four Jackson Electric Tie Tampers. Also other track tools such as rail saws, bonding drills, wood augars, grinders, etc., to a total wattage of 1250 continuous duty. Will also operate flood lights.

The efficiency of each workman is increased to the maximum as the tampers are operating 100% of the time, delivering 60 blows pe second to the ballast. The entire weight of the machine rests on the ballast, the operator merely "pointing" it under the tie. When moving from tie to tie the machine is not lifted but dragged, the weight resting upon the curved portion of the bar.

Representatives.

The Normac Corporation of Japan
NO I YURAKUCHO. I CHOME.-TOKYO