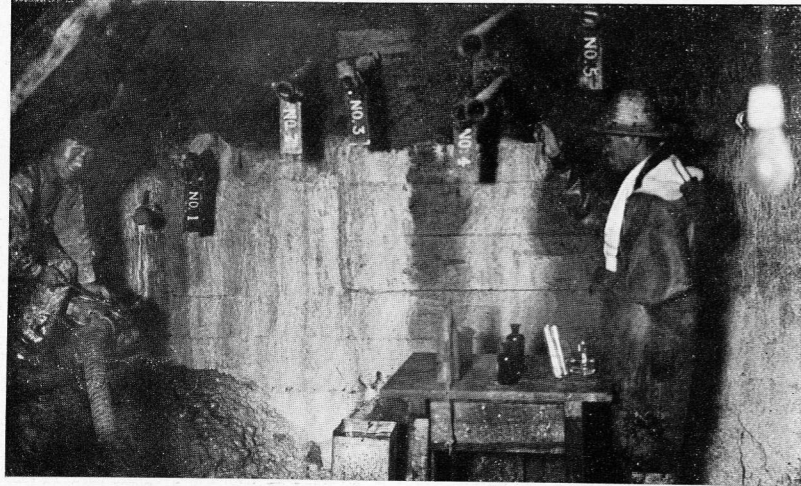


熱海線丹那隧道工事(其六)



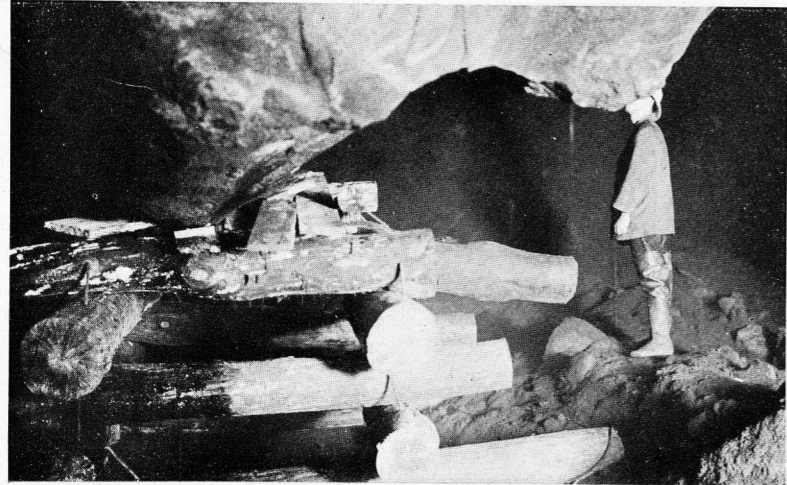
沼津口水抜坑の湧水

423



沼津口4950呎附近導坑に於ける薬液及セメント高圧注入坑

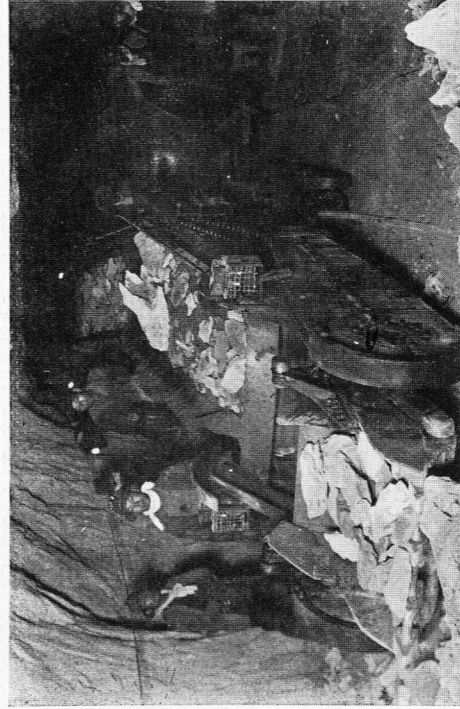
424



沼津口中脊盤坑道7821呎附近大空洞

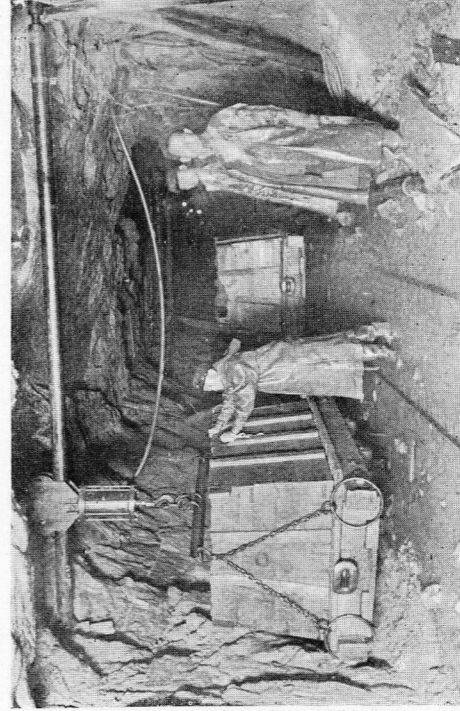
425

上越線清水隧道工事(其一) 單線型延長約6哩



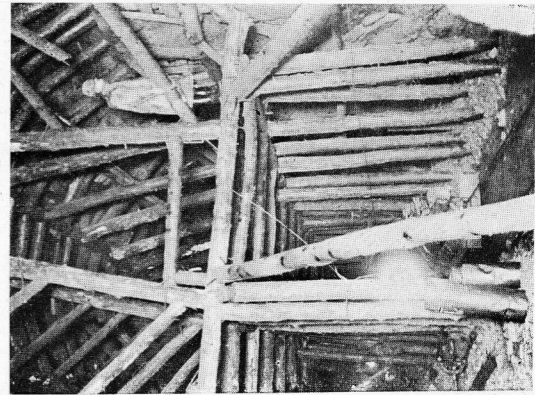
426

高崎口導坑に於てマイアース・ホエレ・研出機に依る湧出



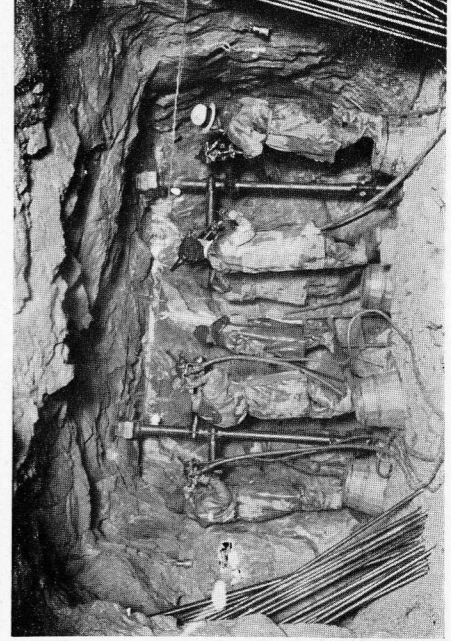
427

長岡口土運車遷移機



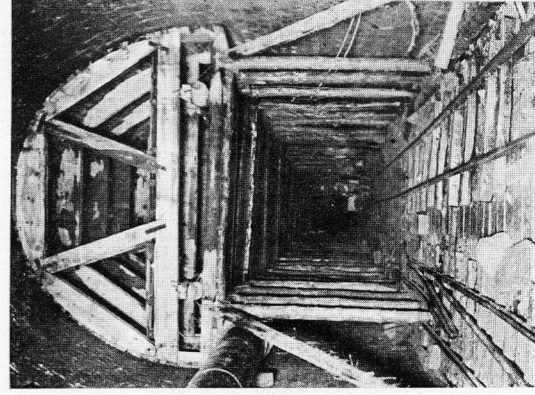
428

長岡口支保工



429

長岡口導坑に於てインガソラン・R-72 鑿岩機に依る穿孔



430

長岡口疊築用拱架