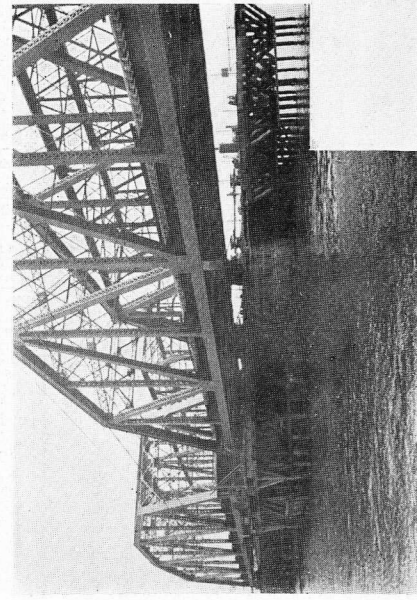
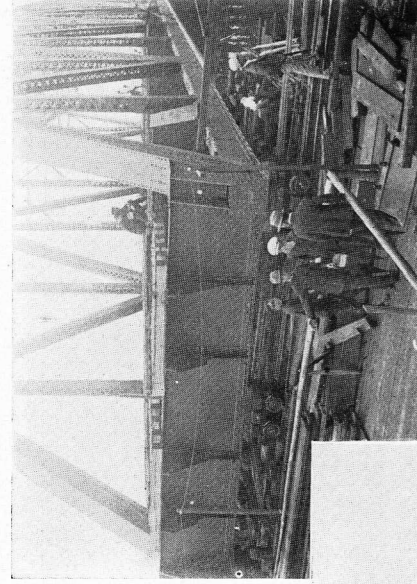


常磐線隅田川橋梁橋桁架換工事



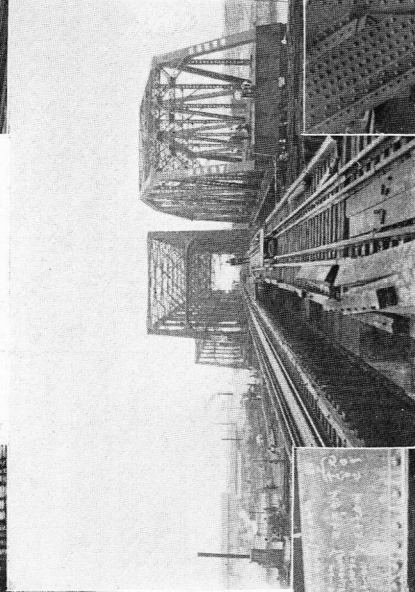
新橋桁側面の景

327



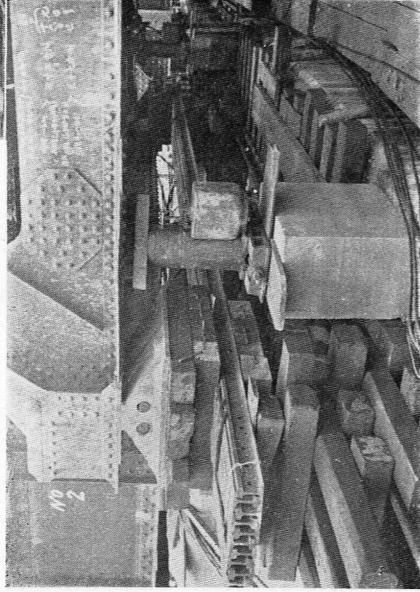
新橋桁移動準備完了

328



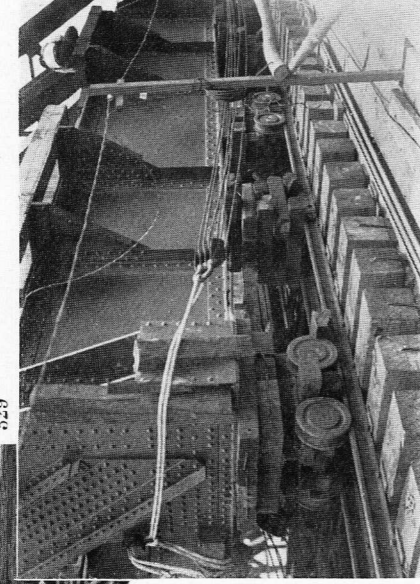
第二橋桁上軌道敷設中

329



舊橋桁下に豆トロッロ挿入準備中

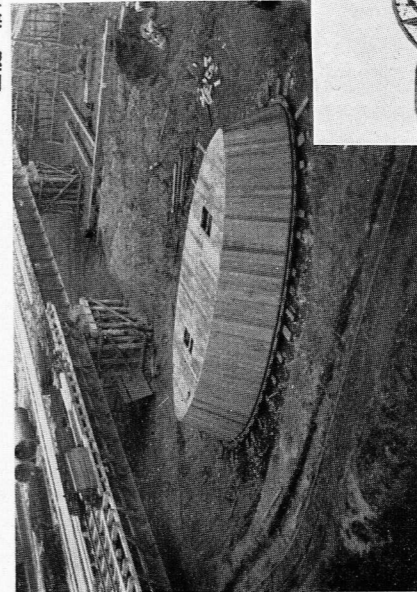
330



新橋桁下に豆トロッロ挿入

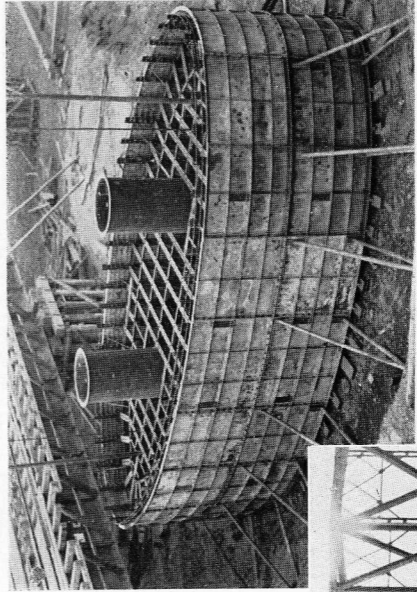
331

関西本線揖斐川橋梁工事
ワーレン式構橋 (徑間 200呎 15連, 120呎 1連)
基礎 潜函工



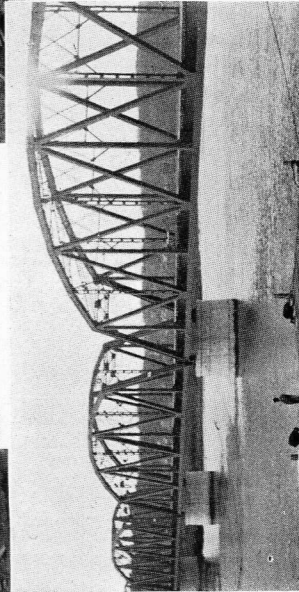
潜函作業室型枠組立

332



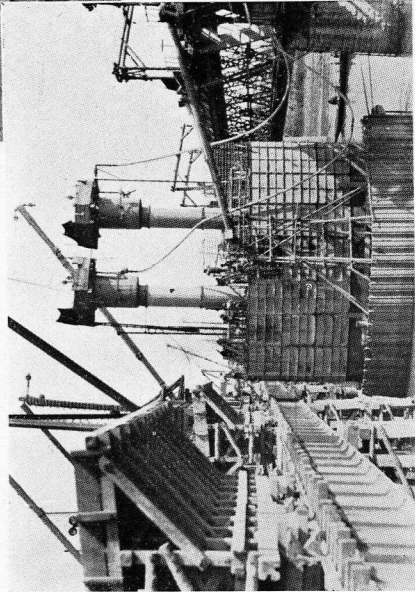
潜函下部鐵骨及外型枠組立

333



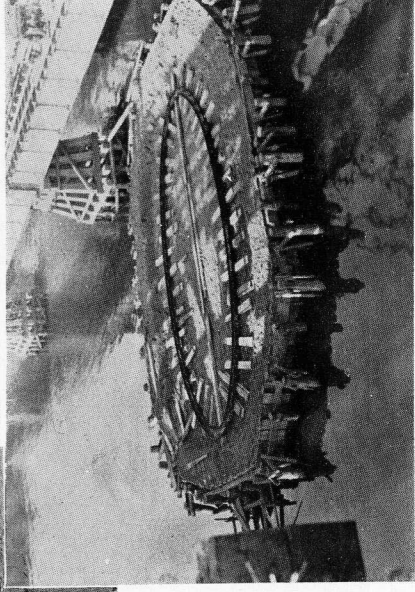
完成せる揖斐川橋梁

334



潜函沈下作業中

335



築島上に非筒の底沓据付

336