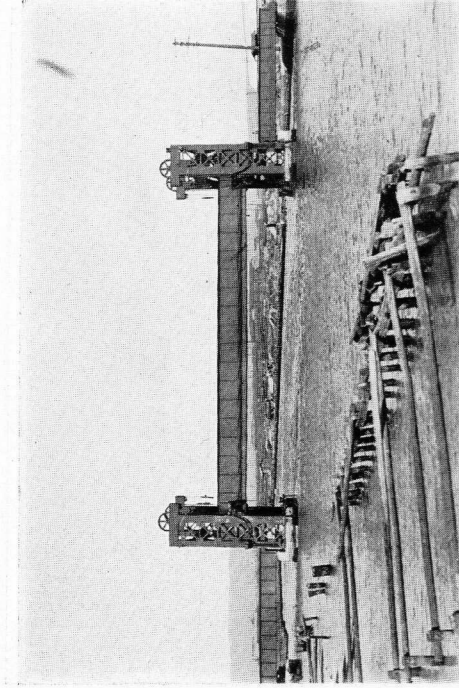


314

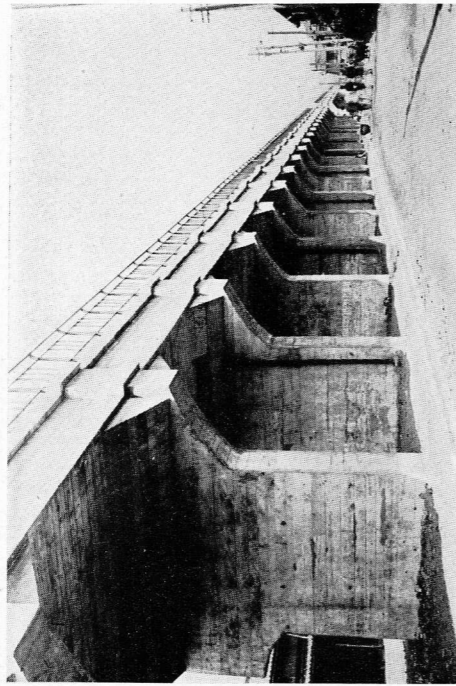
岩崎運河橋梁ダブル・ワーレン橋（徑間 300 呎）



315

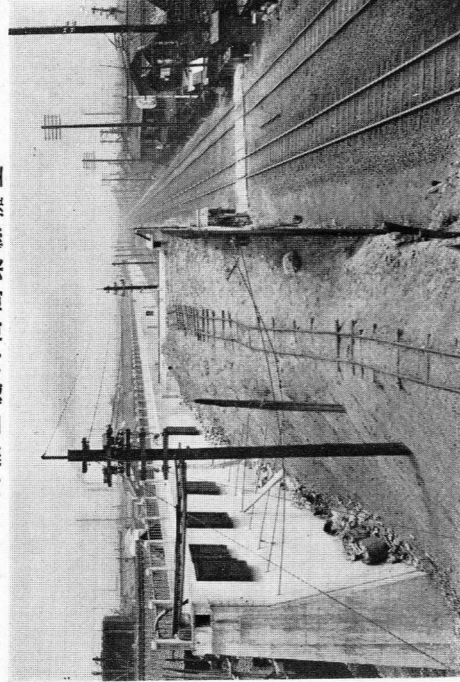
天保山運河橋梁徑間 78 呎

大阪上淀川間高架線擁壁



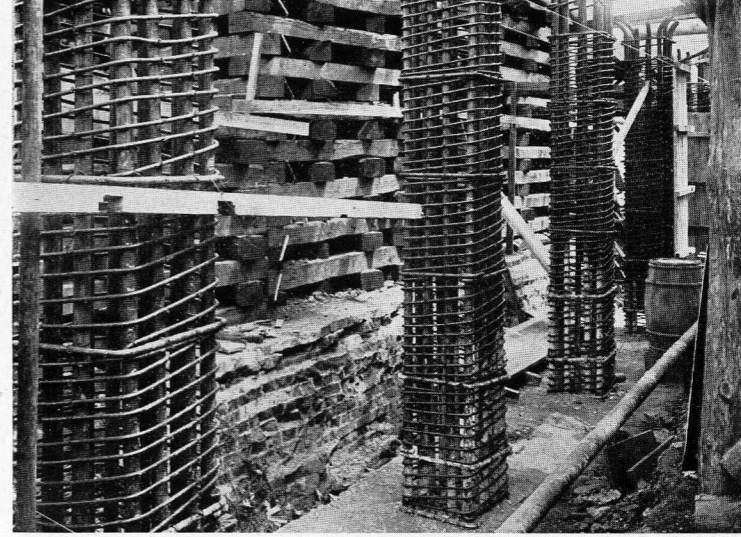
316

本庄川鮑川間スラブ橋



317

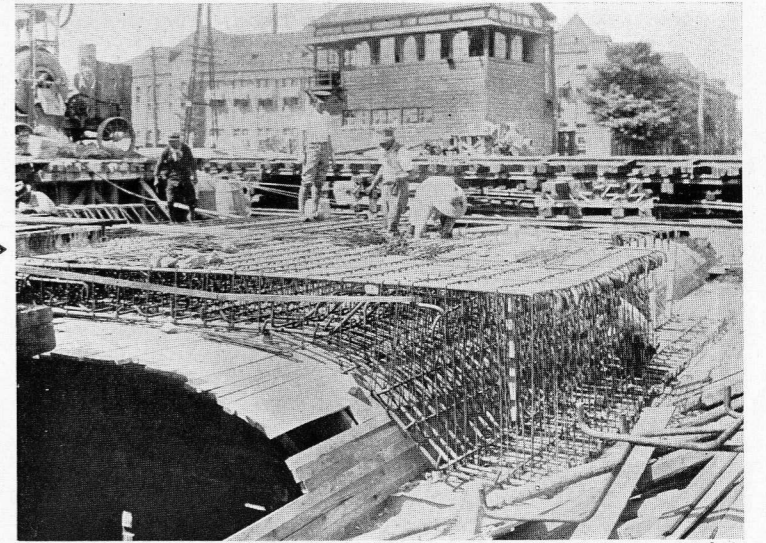
阪神北大阪線より上淀川方面を望む



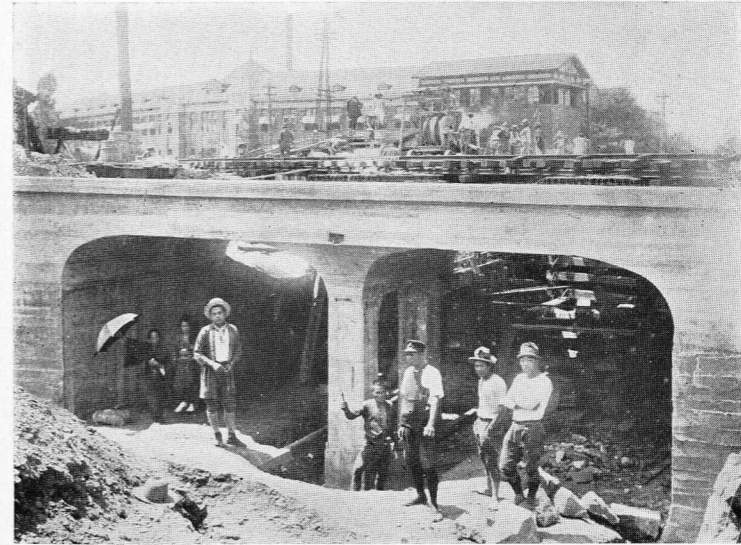
←柱の鉄筋組立中

318

拱の上部鉄筋組立中→



319



←東入口の幕板取外したる景

320